

# 210W29

## Full Floor w/ 3 Sides of Light & Windows, Close to Penn Station

**SPACE**

6th Floor

**TERM**

3-10 Years

**SIZE**

2,300 SF

**POSSESSION**

Immediate

**RENT**

Inquire

**ELECTRIC**

Direct to ConEd

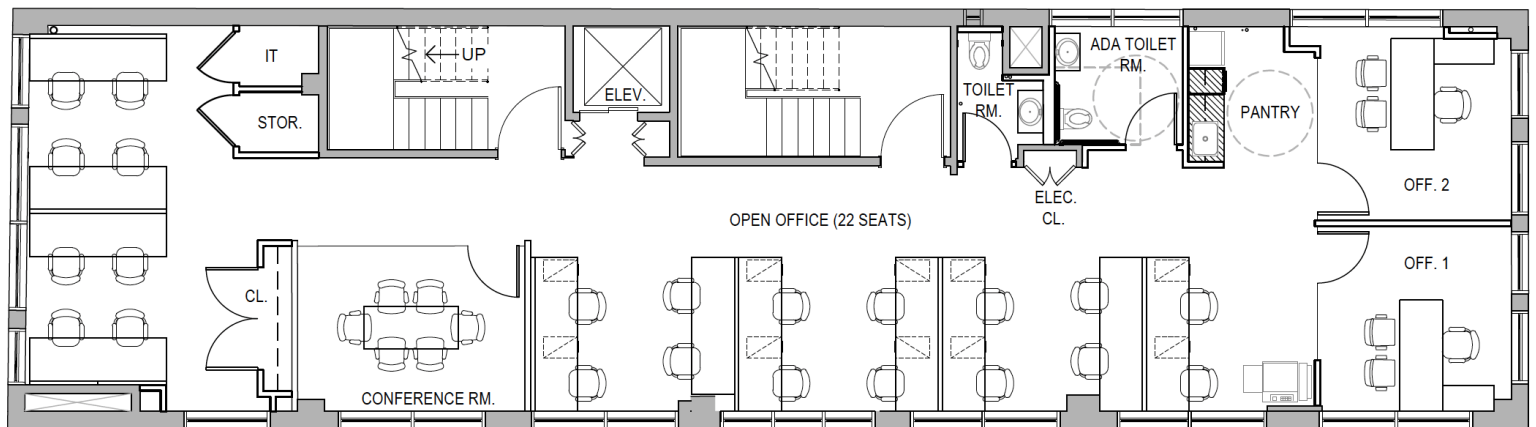
**SPACE DETAILS**

- LL Will Modify for 3 Year Term, or NBI for 5 Year Term (New Pantry, Restrooms, Upgraded Lighting, and more)
- 3 Sides of Windows & Light
- High Ceilings & Hardwood Floors
- Open Area for 20+ Workstations





## Test Fit Plan











NBI Standard



NBI Standard