



In the Heart of NoMad
Modern design + Classic elegance

276 FIFTH AVENUE OFFICE SUITES

Originally opened in 1892 as the Holland House Hotel, this building was designed by architects George Edward Harding & Gooch boasting 350 rooms of palatial elegance emanating both social and technological ambitions of Gilded Age New York. The Holland House lost its luster in changing economic realities and was converted to commercial use in 1920. The building's limestone facade offers a surviving glimpse into the grandeur that once defined its era on Fifth Avenue. Today the building features office suites small and large accommodating teams from 10 to 50 plus with organic growth potential and onsite property management and services.

BUIDLING FEATURES

This 11-story corner office building is located in a prime NoMad location on 5th Avenue and 30th Street, featuring classic, modern & creative office spaces ranging in size from 1500 to 11,000 rsf. 276 5th Avenue boasts a newly updated lobby, a grand staircase throughout, new windows, and has fully furnished and wired spaces ready for immediate occupancy.

Building Highlights:

Abundance of operable windows

Renovated Suites of varying sizes with hardwood flooring, branding opportunity, new pantries; soft seating, conference, huddle and social areas

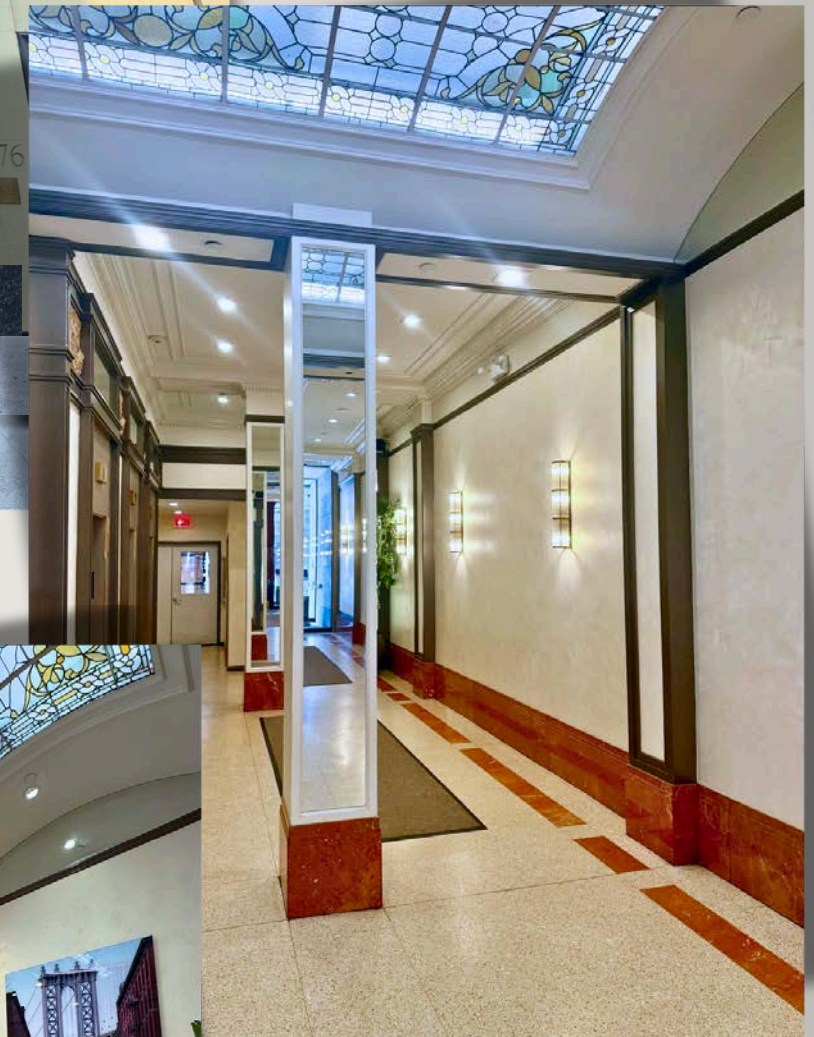
24/7 access with attended lobby and security

Tenant Controlled A/C; often ductless

Exceptional proximity to public transportation

On site property management office for hands on services

Smart key access and sub-metered electric



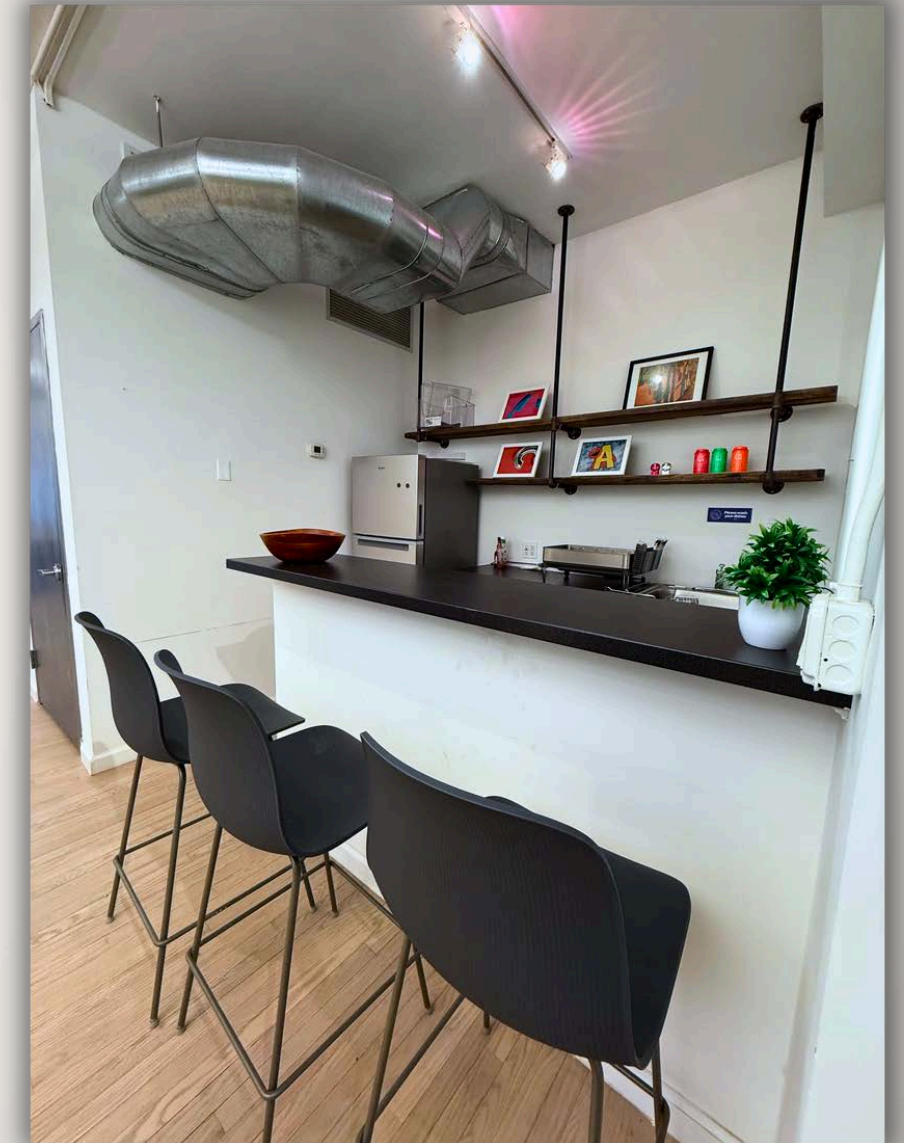
SUITE 804 PLUG & PLAY 2,468 RSF



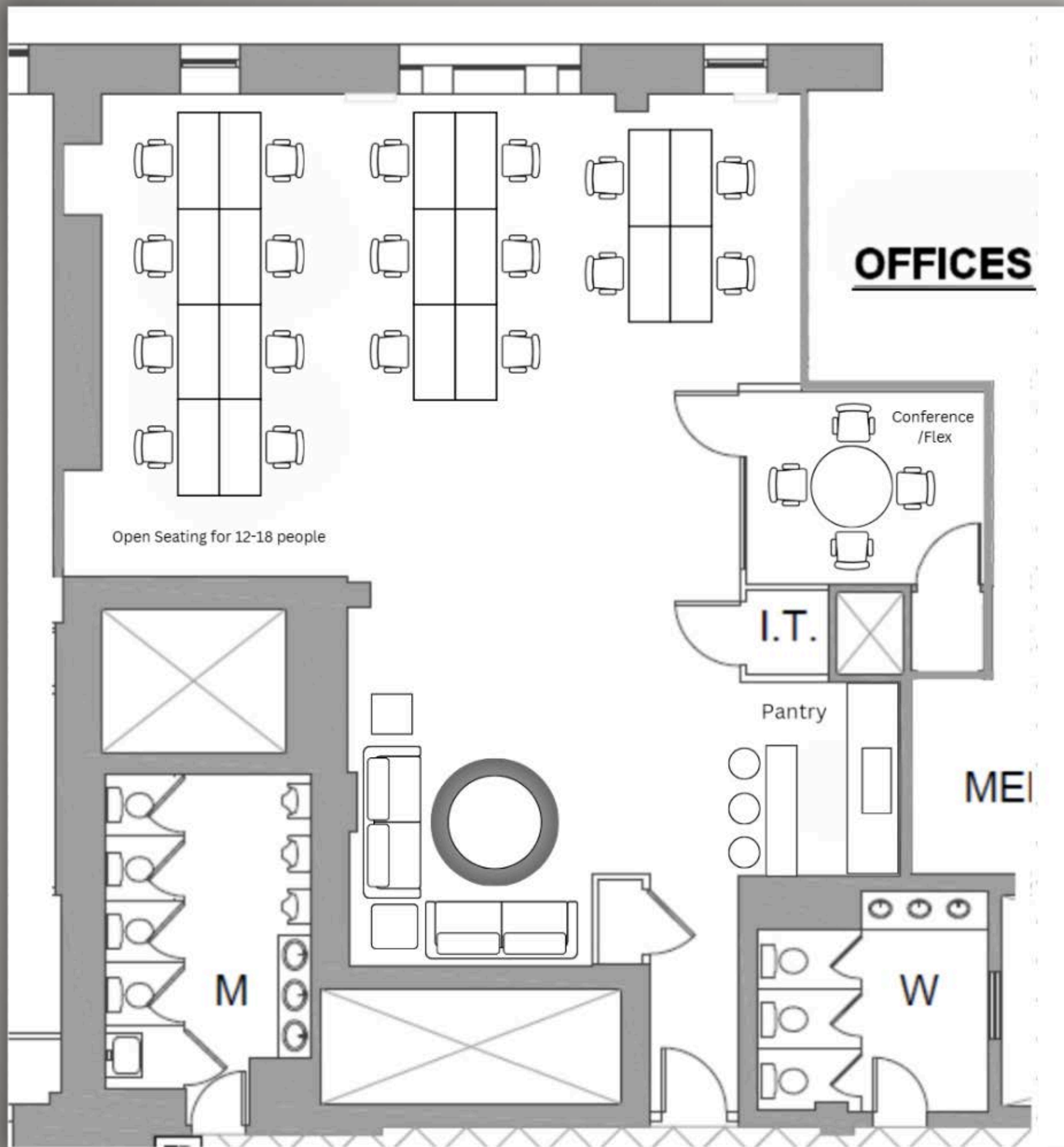
Lounge



Open Seating for
12-18 people



Open Pantry



EXISTING CONDITIONS FLOOR PLAN

Open Seating for 18 People

1 Conference/Flex Room

Wet Pantry and High-Top Seating

Lounge Area

Beautiful Wood Flooring

Tenant Controlled A/C

Newly Renovated Corridor

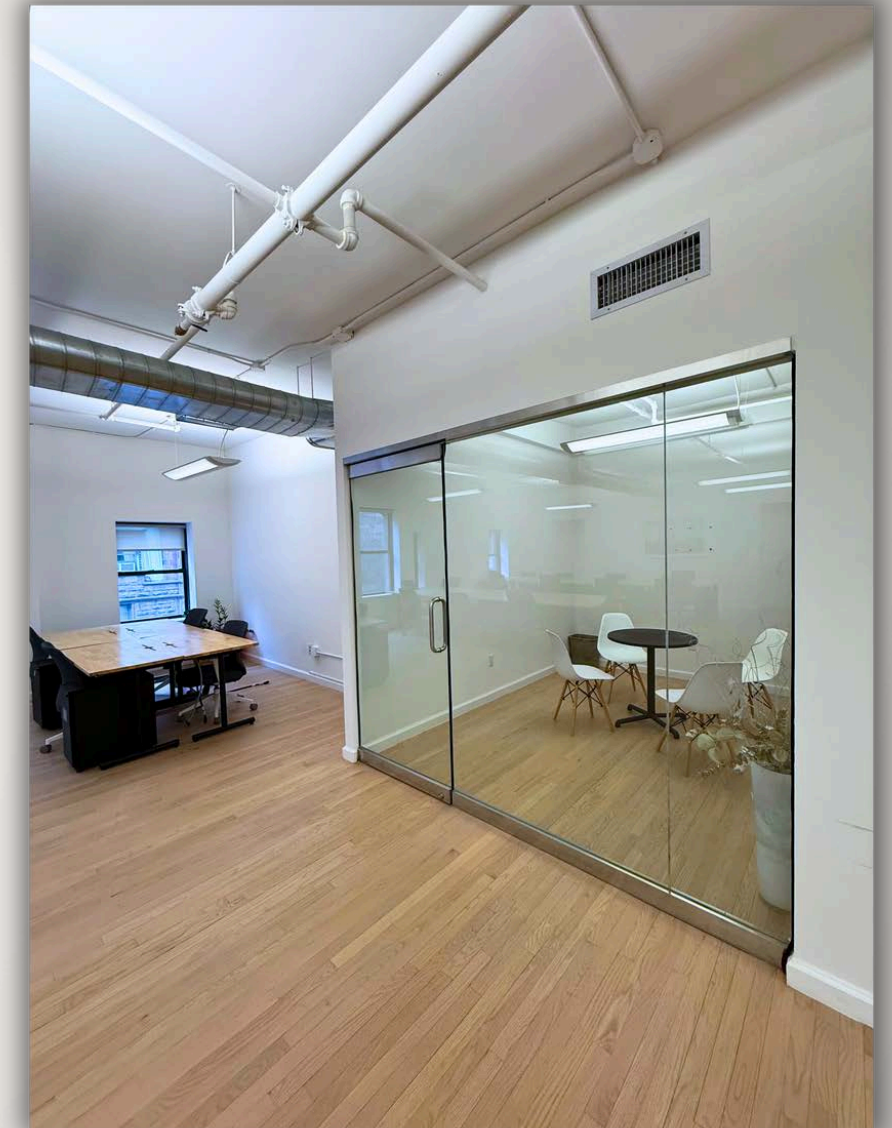
SUITE 804 PLUG & PLAY



Open Area



Open Area View



Flex/Conference Room