

CHELSEA ARTS CENTRE

- Prime West Chelsea location between West 24th and 25th Streets — steps from The High Line and Hudson River Park
- Several units available ranging in size from 2,499 rsf to 2,989 rsf
- Building features 24/7 access, operable windows, 3 elevators (1 oversized), tenant-controlled HVAC, High quality interior finishes, and 24-hour freight elevator
- Walking distance to Hudson Yards, Chelsea Waterside Park, Chelsea Dog Park, Pier 62 Skatepark, Pier 62 Carousel, Hudson River Park, Pier 63, The High Line, Chelsea Piers, and Little Island at Pier 55

210 11TH AVE

CHELSEA ARTS CENTRE

210 11TH AVE

Current Availabilities

Unit	Size	Possession
Suite 403:	2,499 rsf - corner unit - 12 Windows providing north and west exposures and Hudson River views - Fully built office and showroom space	Immediate

- Comments:
- Boutique building offering flexible lease terms - Good city and river views
 - All units feature polished concrete floors, operable windows, and exposed ceilings
 - Most spaces are wide open with creative lighting and pantry
 - Some spaces have offices and conference rooms
 - Prime Chelsea neighborhood - Hudson Yards vicinity
 - Spectrum (formerly Time Warner) & Verizon data/telecom
 - Bike Room with storage for helmets and bike air pump

Join Fashion Tenants such as:

Marc Cain, Gabriela Hearst, Jonathan Simkhai, Isabel Marant, Mackage, Rainbowwave
Citizens of Humanity, Michael Stars, EFG Apparel

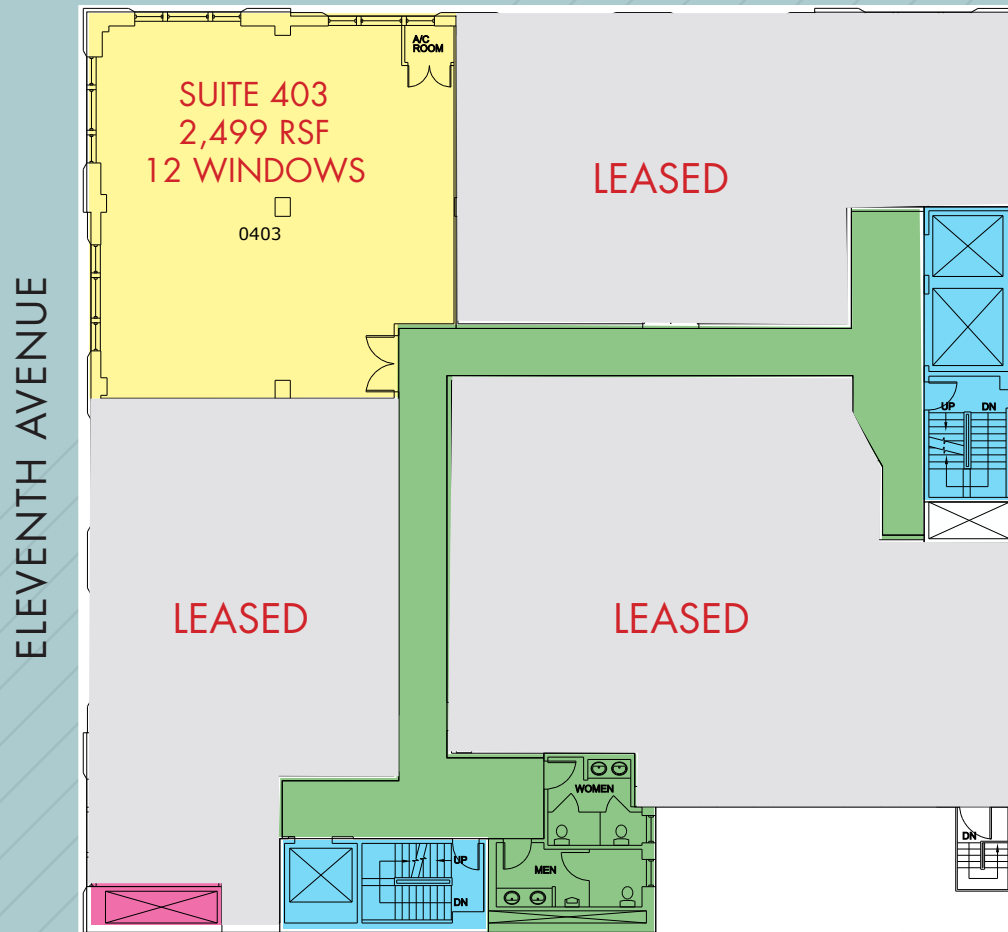
Join Art & Design Tenants such as:

Sears-Peyton Gallery, Amsterdam Whitney International Fine Art, Craig Greenberg Architects, Moleskin America
Betsy Senior Fine Art, Minagawa Art Lines, Bossa Furniture, Team Laird, Fernando Jorge

210 ELEVENTH AVENUE

Suite 403: 2,499 rsf - 12 Windows providing north and west exposures and Hudson River views. Fully built office and showroom space

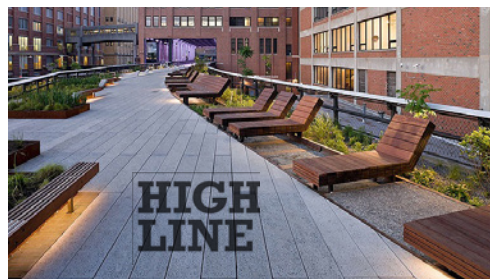
WEST 25TH STREET



(for descriptive purposes only; not to scale.)



Hudson River Park



High Line



Hudson Yards