

41 UNION SQUARE WEST

LOCATION

Corner of 17th Street & Broadway

TERM

Negotiable

PREMISES

ENTIRE 16TH FLOOR — 2,545 RSF

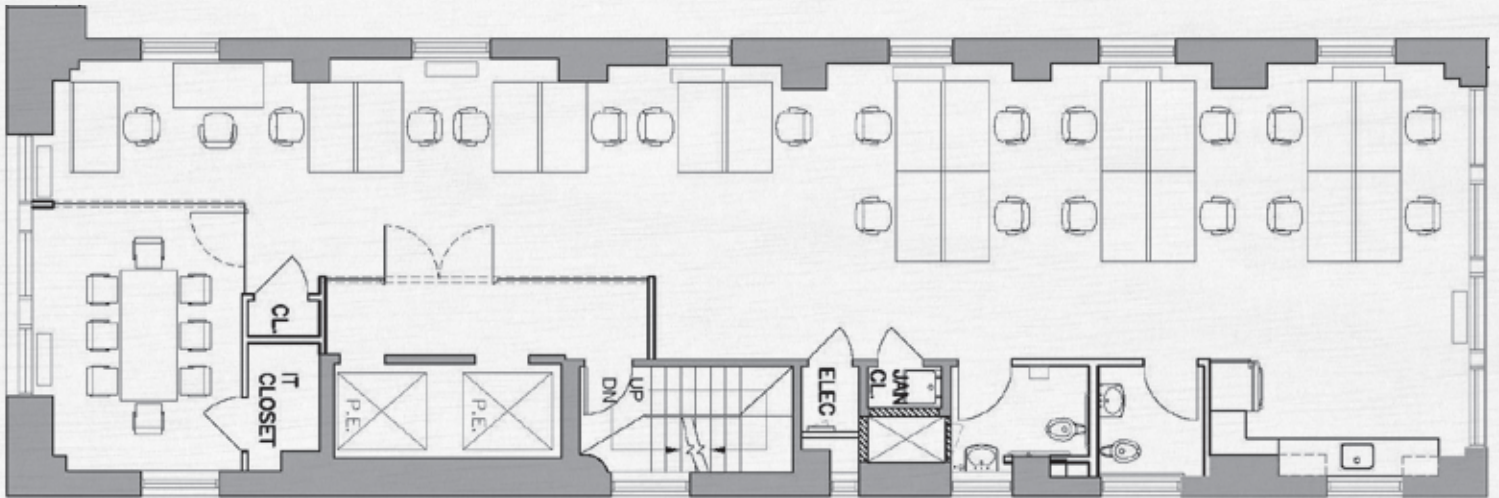




BUILDING HIGHLIGHTS

- *Directly across from Union Square and the Greenmarket*
- *Citi Bike across the street*
- *Two entrances*
- *Steps to the following subway lines:*
4 5 6 L N Q R W
- *Attended lobby with extended hours 7 days / week*
- *Operable Windows*

16TH FLOOR - 2,545 RSF



SPACE HIGHLIGHTS

- *Furnished and wired*
- *Exposed ceilings with hardwood and concrete floors*
- *2 offices*
- *Open Seating for up to 30*
- *Café style pantry with seating area*
- *Ability to add two more offices*