



THE HAYMARKET BUILDING

BRIGHT & BUILT FRONT-FACING SUITE



PREMISES

135 W 29TH ST

RENT

INQUIRE

SPACE

SUITE 1100

POSSESSION

IMMEDIATE

SIZE

2,607 SF

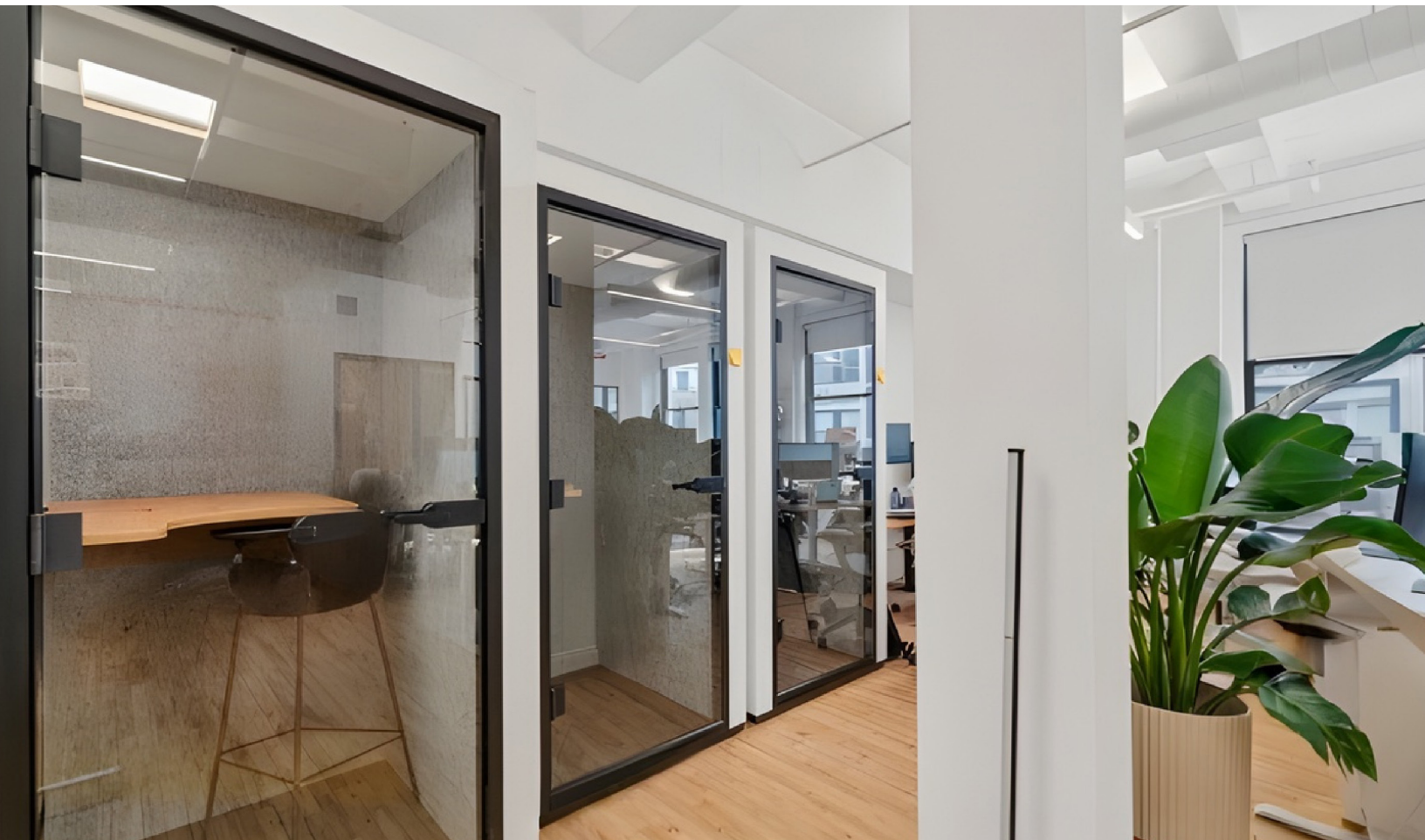
TERM

NEGOTIABLE

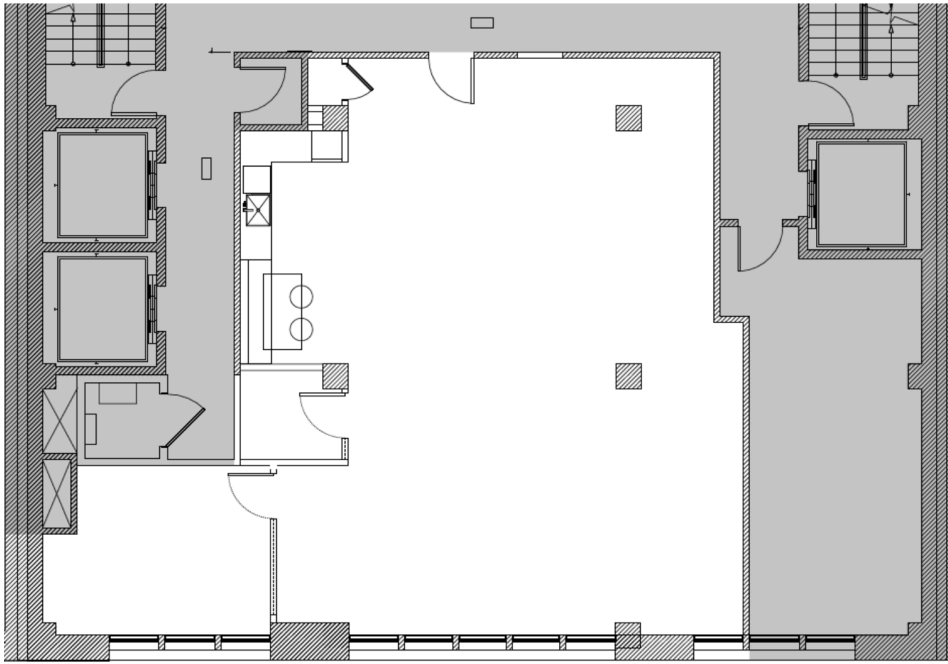
SPACE FEATURES

- ◇ BRIGHT, FRONT-FACING SPACE OVERLOOKING 29TH ST
- ◇ SHARED TENANT ROOF DECK
- ◇ 1 CONFERENCE ROOM, 1 PHONE ROOM, OPEN AREA FOR 15-20+, WET PANTRY
- ◇ TENANT-CONTROLLED A/C









AS-BUILT PLAN

- ◇ 1 CONFERENCE ROOM
- ◇ 1 PHONE ROOM
- ◇ OPEN WORKSPACE APX 20
- ◇ CAFE STYLE WET PANTRY

SHARED TENANT ROOF DECK

