

215 East 58th Street – Design Center

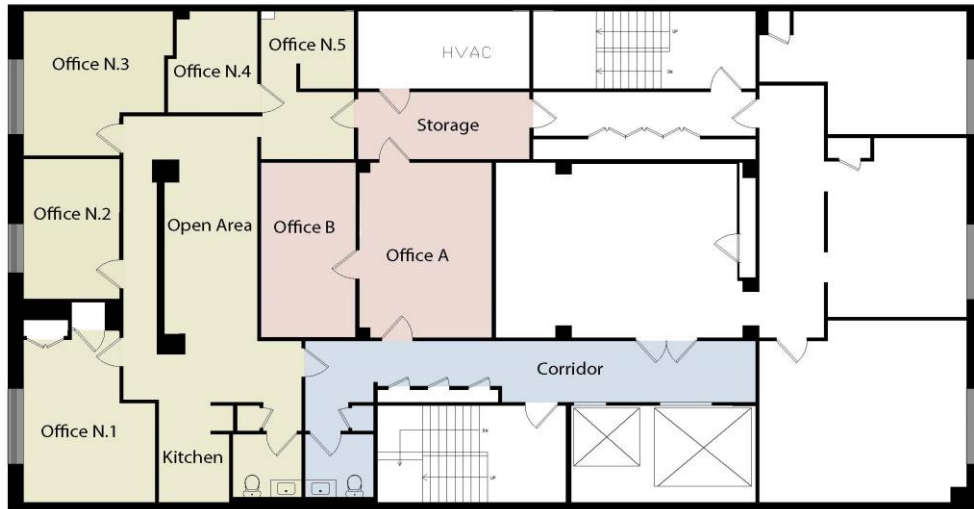
Corner of 3rd Avenue

Luxury Showroom/Office - partial 4th floor

- 2,700 sf office/showroom on east 58th street
- Pristine and bright ample open area, 3 bright and large private offices with oversized windows and two suite/internal office. This space can also provide a unique opportunity to create a luxury contemporary, office/showroom space
- Loft style ceilings, bright, natural lights, north exposures, 3 oversized windows.
- Privacy only 2 other tenant on the floor & 24/7 access.
- Private bathrooms and kitchen and storage area
- Elegant Building specialized in home furnishings showroom/offices, decorators and design companies
- Adjacent to D&D, A&D, Fine Arts Building and Bloomberg Towers.
- Home to Waterworks new Flagship showroom



215 East 58th Street – Design Center



1 4th Floor Plan

215E 58TH
215 E 58TH ST, NEW YORK, NY.

4TH FL PLAN
SCALE: NTS
DRAWN BY: SA
DATE: 04/07/2021

Description and Floorplan (green space)

215 East 58th Street

- A boutique six story commercial building in prime midtown
- Beautifully designed newly renovated lobby by Waterworks
- 24/7 access building with CCTV security cameras
- 2 elevators - recently renovated
- Next to F&D, A&D and in the core of the design district
- Proximity to Park, Madison, 5th avenue, 57th street shopping areas and Bloomingdale, Easy access to several Subway lines including the 4, 5, 6, Q, N and R lines

Premises
2,700 sf

Possession
immediate

Rental/SF/Yr+ Svs
On Request

Electricity
Directly meter

Escalation
3 % annual

Taxes
Proportionate share over base year increase

Security
Negotiable, depending on financial strength