

# 11 HANOVER SQUARE, 23RD FLOOR

Beautiful sun-drenched full floor!  
High floor, great views, amazing natural light.

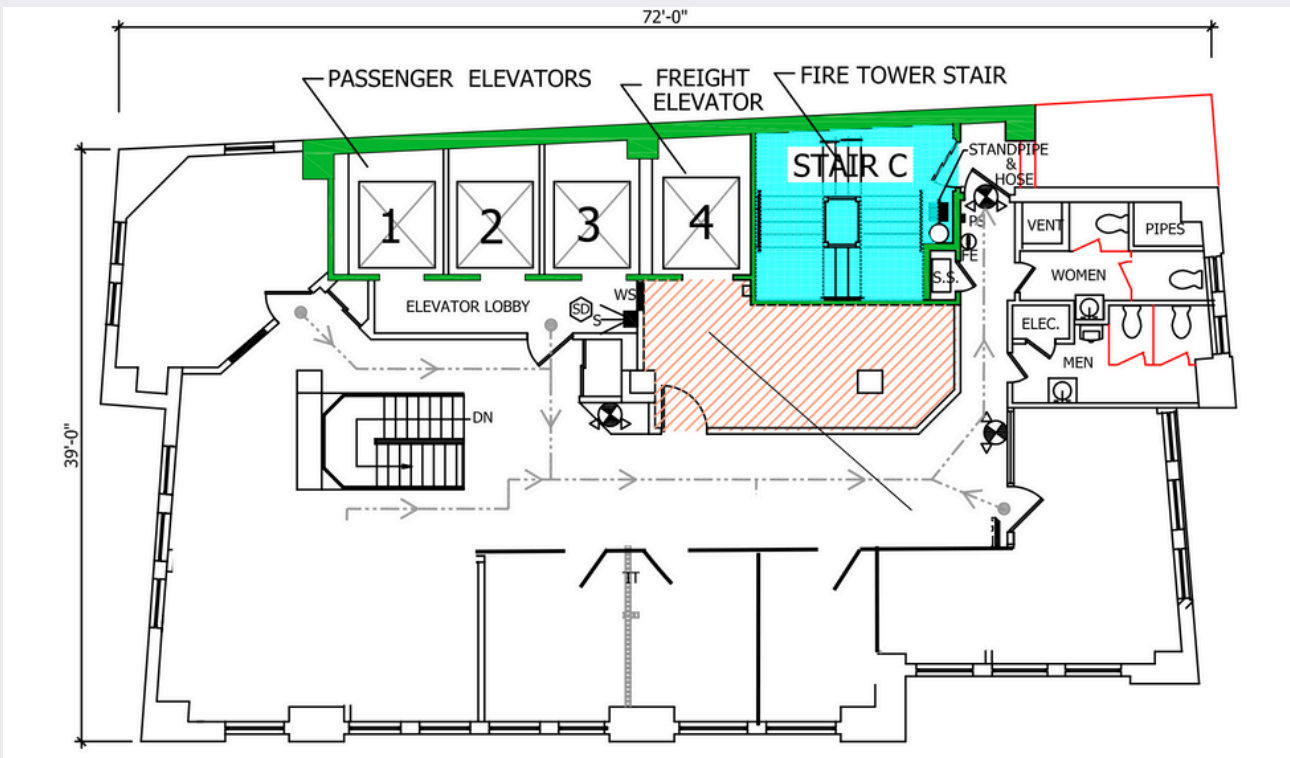
Size: 2,766 RSF

- Corner team room,
- 4 windowed offices,
- Open area for 12 desks

ASKING RENT: Inquire



## CURRENT LAYOUT



## ABOUT THIS PROPERTY

- Attended lobby
- Building amenities: conference room and pantry with breakout area
- 3 passenger and 1 freight elevator
- Flexible lease term and sizes
- Close to public transit

# 11 HANOVER SQUARE



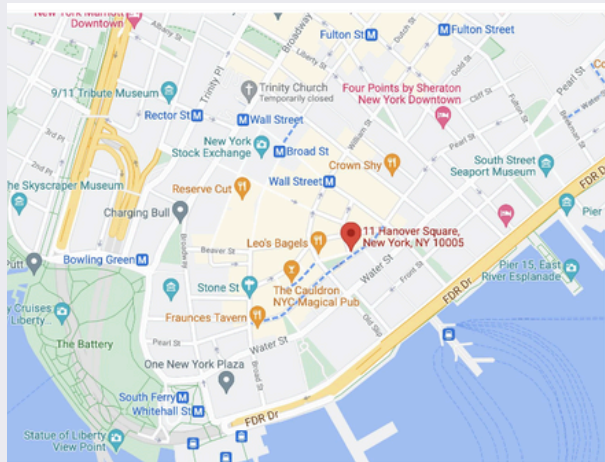
## BUILDING AMENITIES



CONFERENCE ROOM



SHARED PANTRY



Transit / Subway	Walk	Distance
Wall Street (2,3 Line)	4 min	0.2 mi
Broad Street	5 min	0.2 mi
Whitehall Street-South Ferry	5 min	0.3 mi
Wall Street (4,5 Line)	7 min	0.3 mi
Bowling Green	7 min	0.3 mi
<b>Commuter Rail</b>	Drive	Distance
Flatbush Avenue Station	9 min	3.3 mi
Hoboken Terminal	13 min	4.4 mi