

575
MADISON
AVENUE



100K RSF FURNISHED & WIRED BLOCK
IN THE HEART OF THE PLAZA DISTRICT





Entire 3rd Floor: 24,417 RSF

Entire 4th Floor: 24,417 RSF

Term: Through November 29, 2032

SPACE FEATURES

- Floors can be leased individually or as any combination of floors.
- E3: Currently built with a mix of approximately 30 offices/meeting rooms and 100+ workstations.
- E4: Currently built with a mix of approximately 30 offices, 10 conference/meeting rooms and 60+ workstations.
- Fully furnished and wired
- High-end finishes with a mix of perimeter glass fronted offices / conference rooms and a large open space.
- High ceilings and four sides of windows providing expansive light, air and unobstructed, panoramic views.

BUILDING FEATURES

Prime Plaza address located on 57th Street and Madison Avenue. Steps from Central Park. Recently renovated lobby, building entrance and elevator cabs. On-site parking garage.

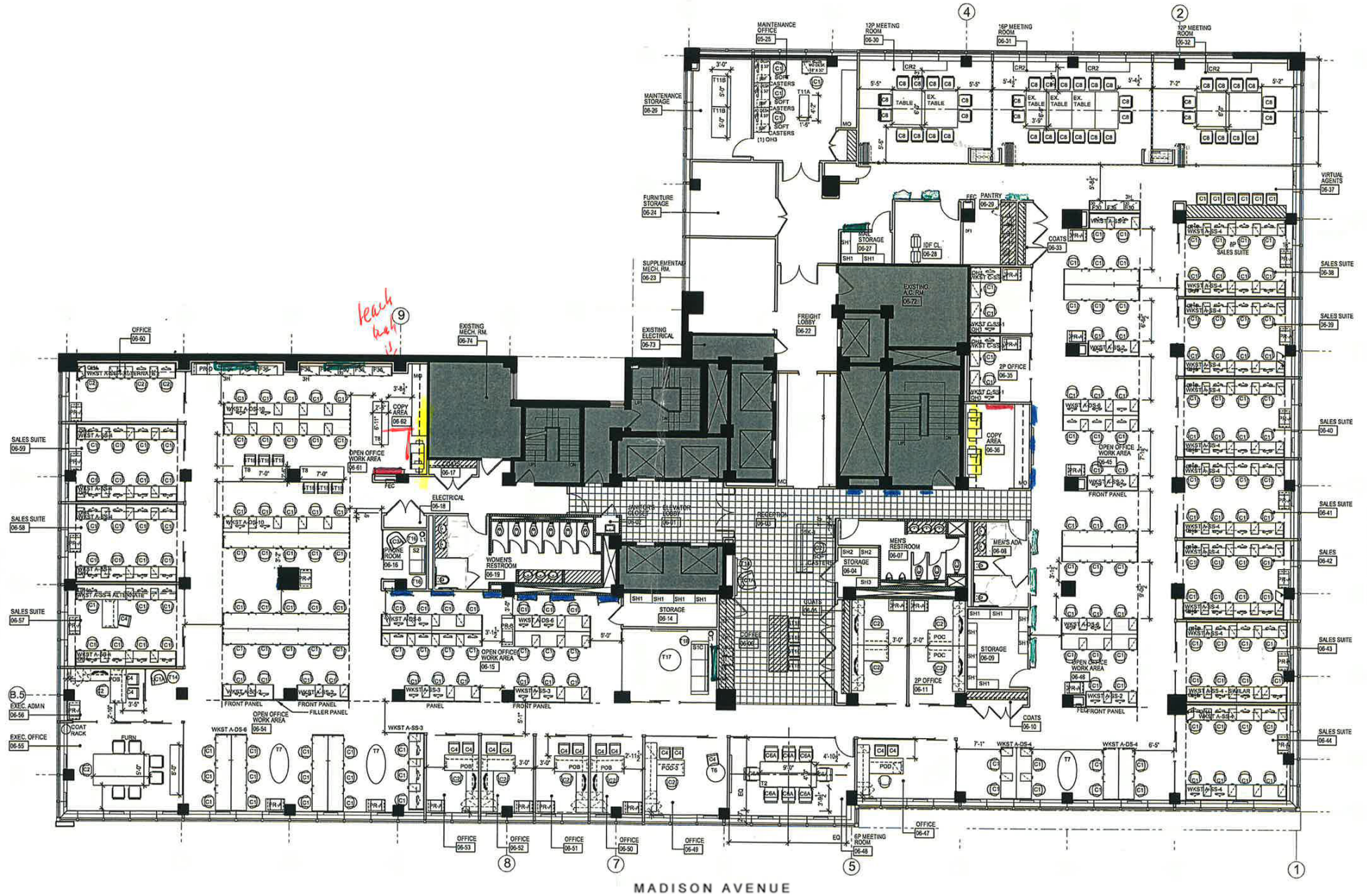




3RD FLOOR | 24,417 RSF

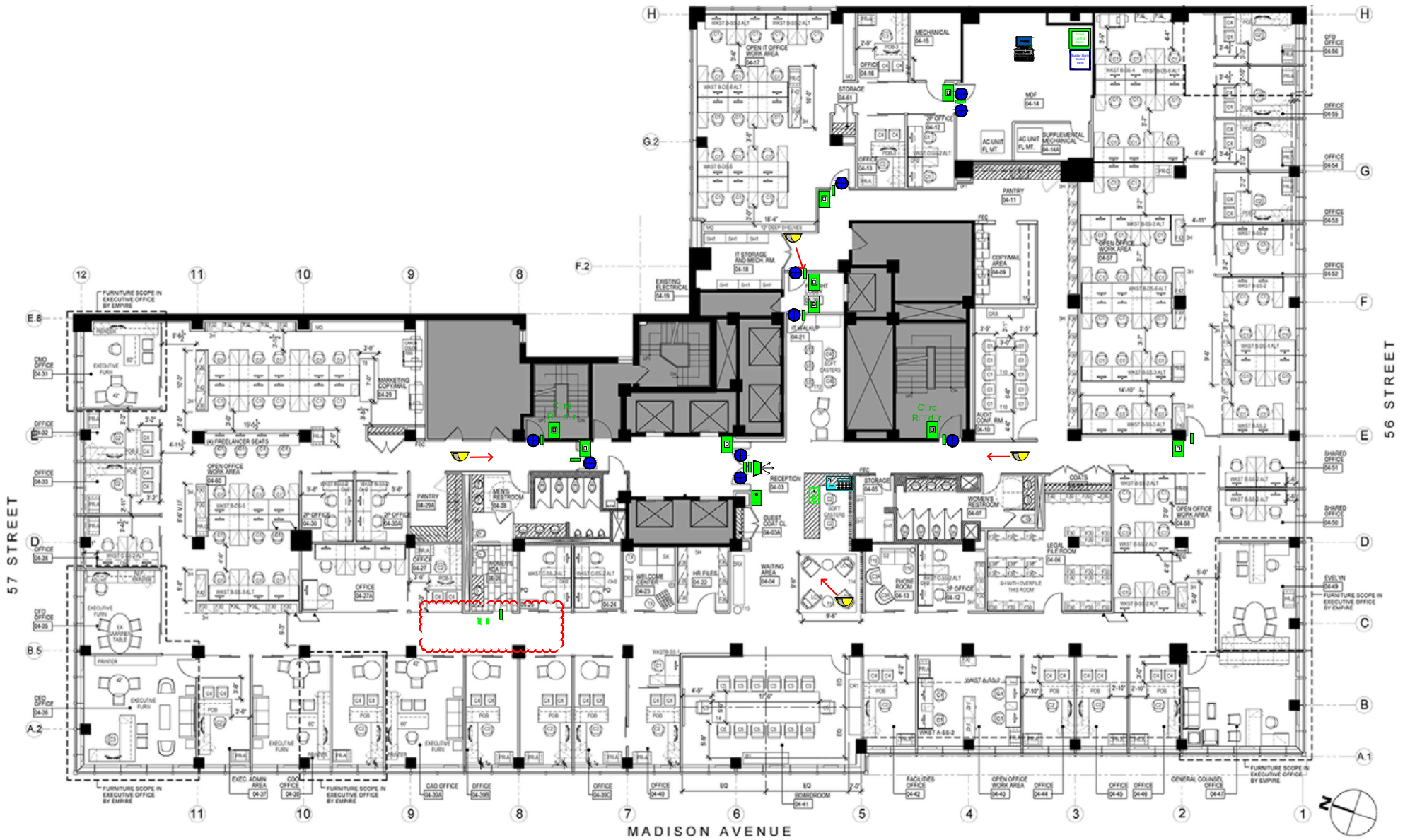
57 STREET

56 STREET



MADISON AVENUE

4TH FLOOR | 24,417 RSF



STEPS TO CENTRAL PARK



**NUMEROUS FIVE STAR HOTELS,
RESTAURANTS AND FITNESS CENTERS**

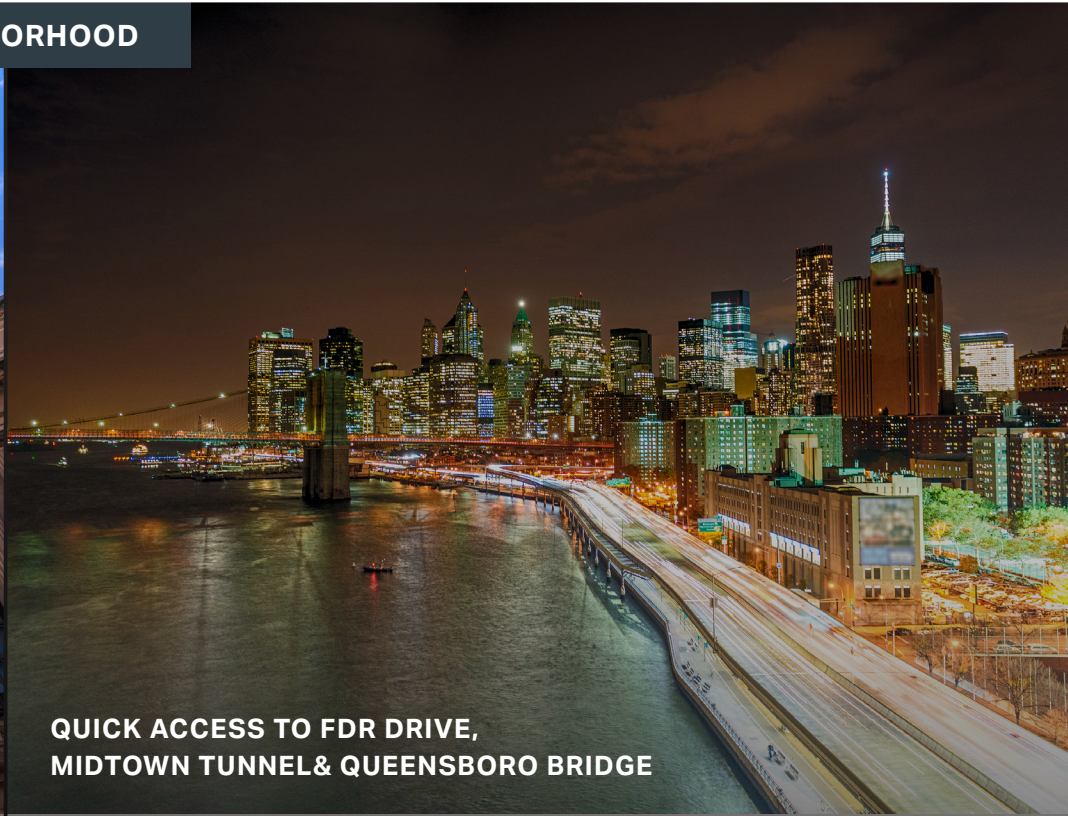


**575
MADISON
AVENUE**

NEIGHBORHOOD



10 MINUTES TO GRAND CENTRAL TERMINAL



**QUICK ACCESS TO FDR DRIVE,
MIDTOWN TUNNEL & QUEENSBORO BRIDGE**

NEWMARK

