

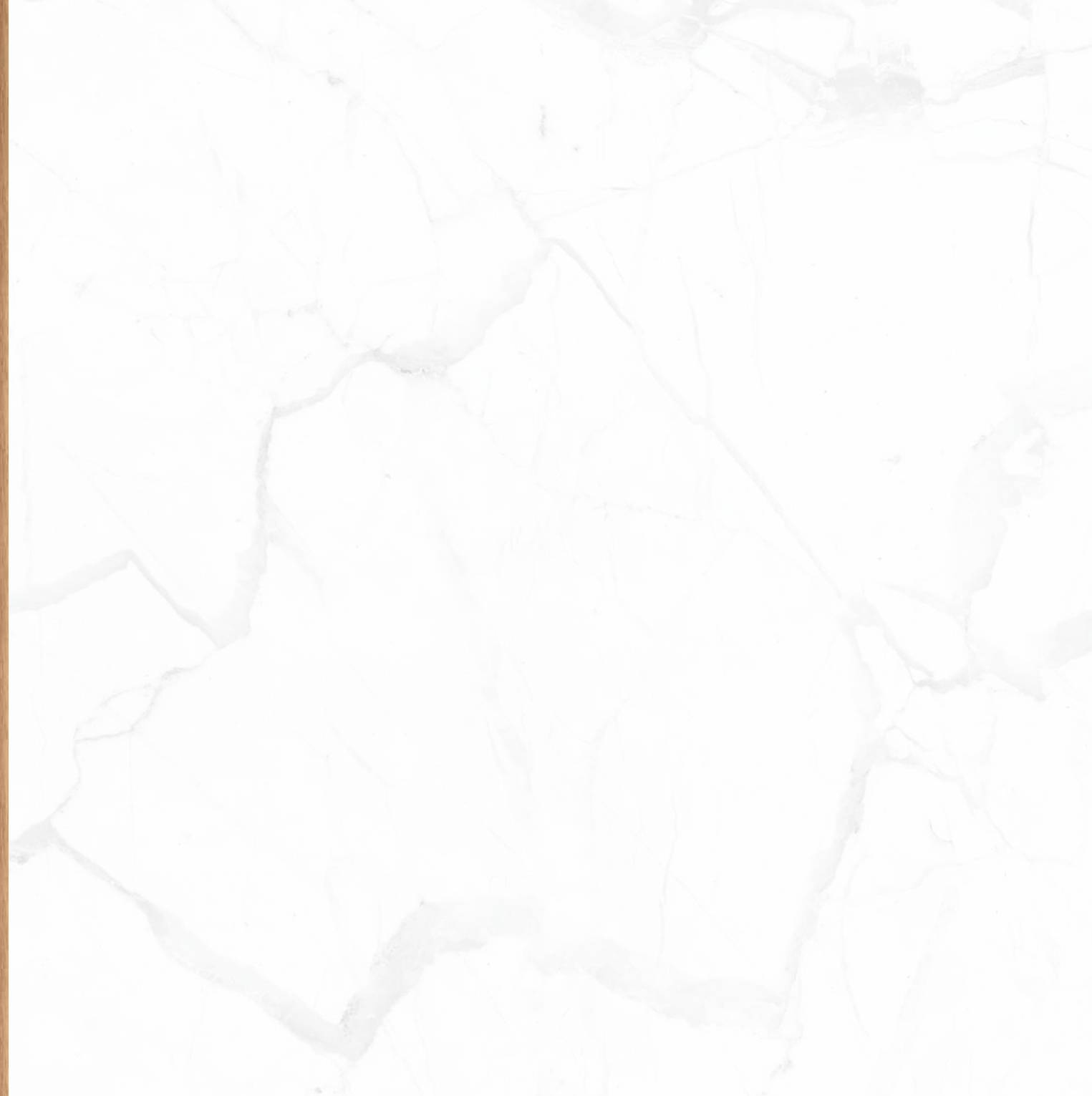
The background features a light-colored, marbled pattern with grey and white veins. This central area is framed by horizontal borders at the top and bottom, which have a vertical wood-grain texture in shades of brown and tan.

133W25

Everything Within Reach



AUTHENTIC BRICK FACADE,
BRAND NEW COMPLETED
ENTRANCE + LOBBY



ACTUAL PHOTO

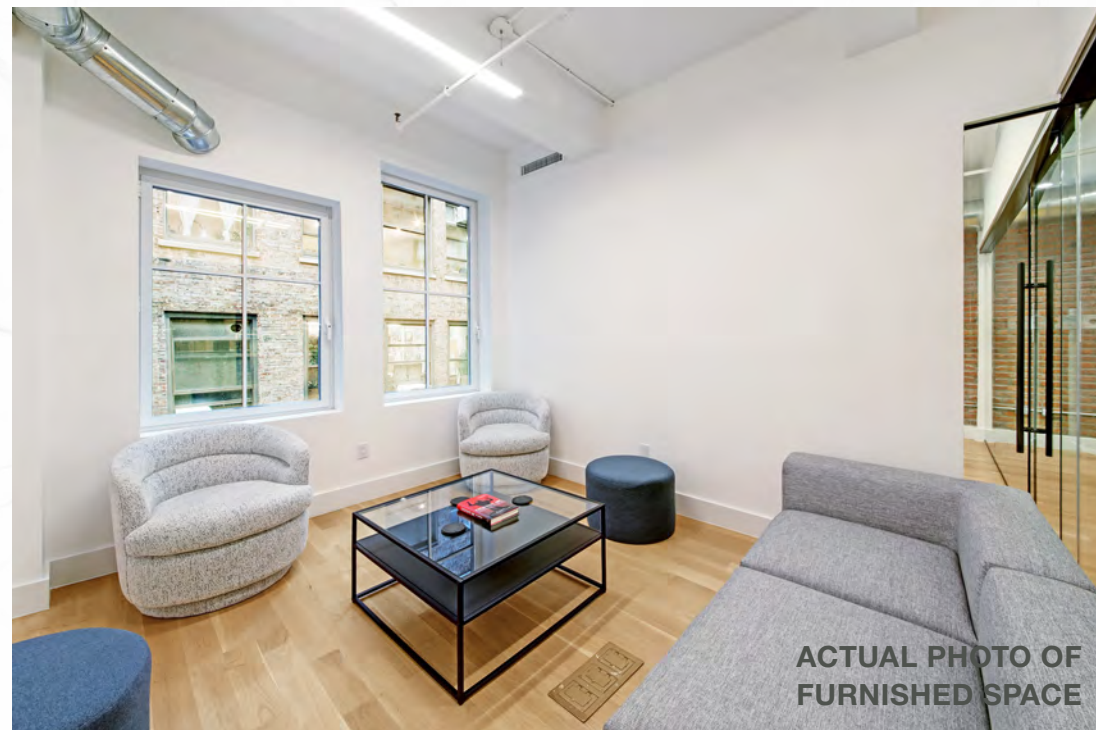


ACTUAL PHOTO OF
FURNISHED SPACE



ACTUAL PHOTO OF
FURNISHED SPACE

COMPLETED **CAPITAL IMPROVEMENTS**
COMMON AREAS + WIDE PLANK OAK
FLOORS + **EXPOSED BRICK**
NEW BATHROOMS
ATTENDED LOBBY + **ON-SITE** SUPER
BIKE STORAGE



ACTUAL PHOTO OF
FURNISHED SPACE

UPDATED ELECTRIC
DEDICATED TELEDATA LINES
TENANT CONTROLLED HVAC
WIRED FOR FIOS
10'5" CEILING HEIGHTS



ACTUAL PHOTO OF
FURNISHED SPACE



COLUMN-FREE SPACE

GLASS FRONT CONFERENCE ROOMS AND OFFICES

NEW DIRECT/INDIRECT **LIGHTING**

PERIMETER + FLOOR OUTLETS





NEW PANTRIES, STAINLESS STEEL
APPLIANCES FEATURING **FULL-SIZED**
REFRIGERATOR, MICROWAVE,
DISHWASHER + **WINE FRIDGE**

TERMS: 3–10+ YEARS

NEW BUILDING INSTALLATION (NBI) AVAILABLE

T.I. & TENANT CONCESSIONS AVAILABLE:

V

ACTUAL PHOTO OF
FURNISHED SPACE