

The logo consists of the numbers 5, 6, and 8 rendered in a white, geometric, sans-serif font. Each digit is composed of simple shapes: the 5 is formed by a vertical bar and two curved segments; the 6 is a vertical bar and a circle; the 8 is two circles stacked vertically. The background is dark gray with a repeating pattern of large, semi-transparent, overlapping circles and squares.

568

B R O A D W A Y



NEW MODERN LOBBY  
WITH CLASSIC SOHO  
CHARACTER







NEWLY ACTIVATED LOBBY  
AT 110 CROSBY STREET



# ROOFTOP TERRACE





# SPECTACULAR SKYLINE VIEWS





# AMENITY LOUNGE





# UPGRADED CORRIDORS & HIGH-END PREBUILTS





# HIGH-END PREBUILTS





# SOPHISTICATED CONFERENCE SPACE





# MODERN PANTRY





# DUPLEX PENTHOUSE





# DUPLEX PENTHOUSE

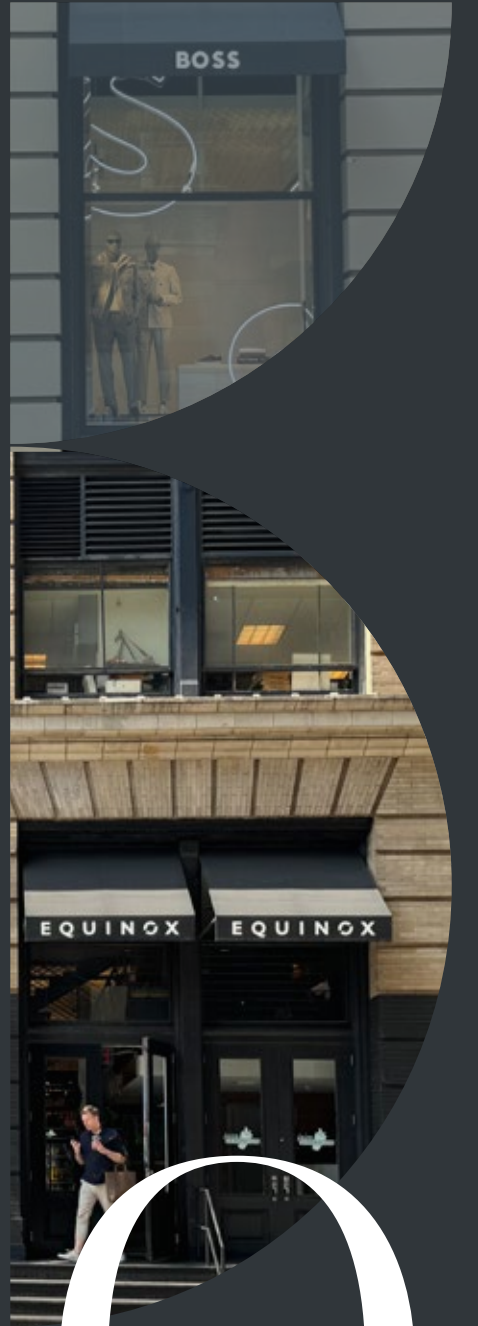
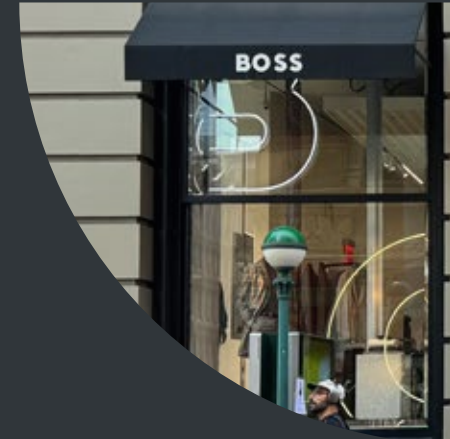




# ELEVATE



YOUR  
WORK  
IN



# SOHO



# ACCESSIBILITY & CONVENIENCE

5 MINUTE WALK

# TRANSIT

Grand Central	14 Mins
Penn Station/ Port Authority	13 Mins
Holland Tunnel	10 Mins
World Trade	10 Mins
Union Square	6 Mins

# EAT

- Sartiano's
- Torrisi
- Balthazar
- The Butcher's Daughter
- The Grey Dog
- Lure Fishbar
- Jack's Wife Feda
- Mamo
- Pera Soho
- Lure
- Fanelli's

# DRINK

- (Sub)Mercer
- The Crosby Bar
- Felix Roasting
- Nomo Soho
- Grand St Social
- Mulberry St. Bar
- Gregory's Coffee

# SHOP

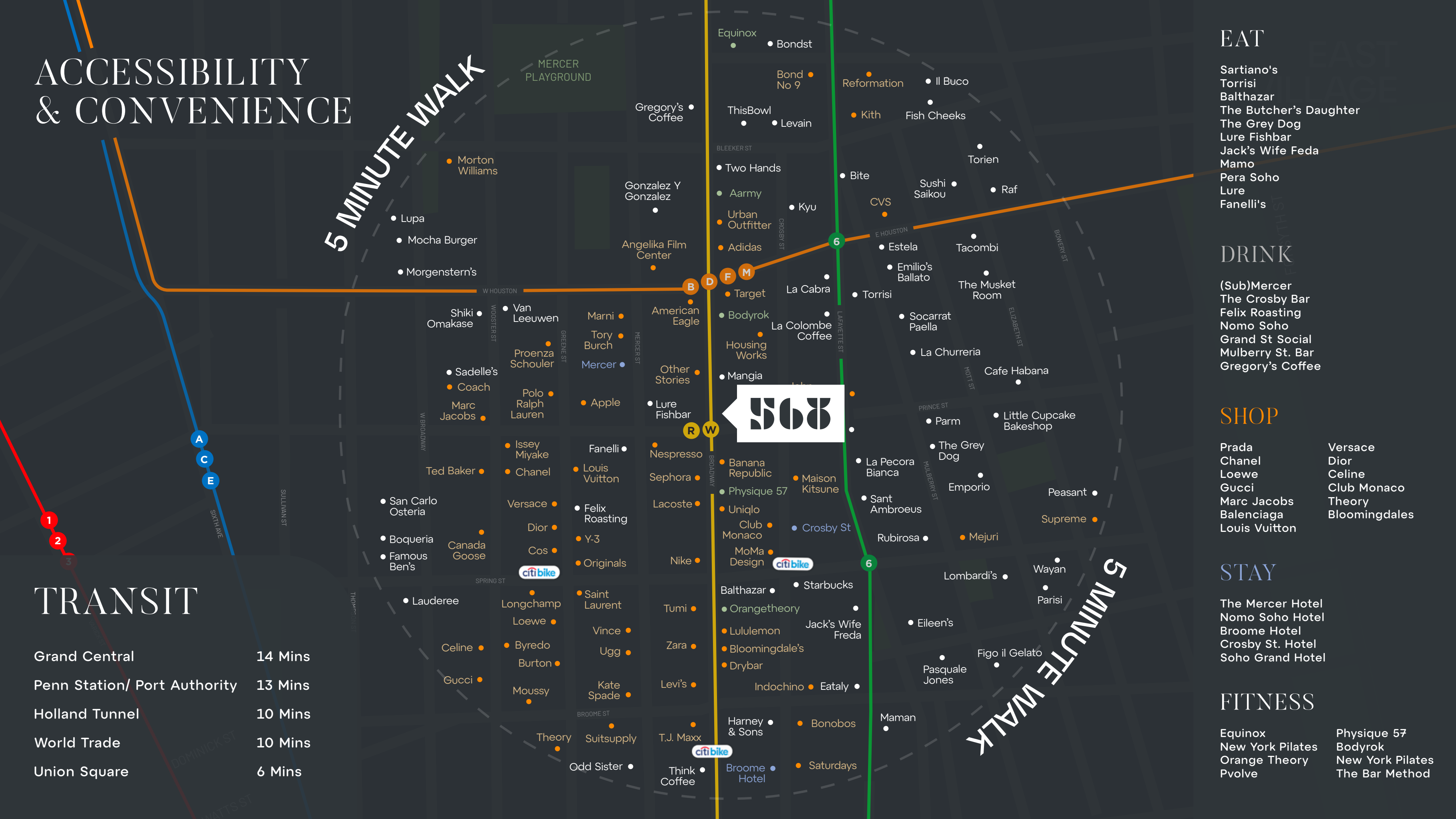
- Prada
  - Chanel
  - Loewe
  - Gucci
  - Marc Jacobs
  - Balenciaga
  - Louis Vuitton
- Versace
  - Dior
  - Celine
  - Club Monaco
  - Theory
  - Bloomingdales

# STAY

- The Mercer Hotel
- Nomo Soho Hotel
- Broome Hotel
- Crosby St. Hotel
- Soho Grand Hotel

# FITNESS

- Equinox
  - New York Pilates
  - Orange Theory
  - Pvolve
- Physique 57
  - Bodyrok
  - New York Pilates
  - The Bar Method





# TECHNICAL SPECIFICATIONS

GROSS BUILDING AREA	330,000 rsf	SECURITY	Uniformed security guards staffed at the concierge desk 24 hours a day, 7 days per week
FLOORS	12 Stories	FIRE STAIRS	Stairwells are oversized to exceed New York City and International Building Code Requirements
YEAR BUILT/ RENOVATED	1895/2025	LIVE LOAD	All tenant floors are 66 lbs. live load.
CONSTRUCTION	Structural steel, terra cotta, concrete, cast stone	RESTROOMS	Restrooms are 100% ADA compliant and include extra fixtures
FLOOR SIZES	Office floors 2-11 : 30,802 rsf	ADA ACCESSIBILITY	The building is fully ADA compliant Building Management
FLOOR HEIGHTS (SLAB TO SLAB)	Floors 2-11 : 14’ - 0” Ground : 20’ - 0”	ELECTRICAL	6 Watts per rsf demand load exclusive of base building air conditioning
OUTDOOR AREA	7,500 SF Roof deck	TELECOM	Spectrum, Verizon, Pilot Fiber, Century Link, Global Capacity, Bway Net
BUILDING AMENITIES	Activated roof deck, tenant lounge, cellar storage, private entrance and lobby on Crosby Street	ELEVATORS	Six (6) Passenger elevators    One (1) Oversized freight elevator
BICYCLE STORAGE	Bicycle storage in cellar	LIFE SAFETY	The building Class “E” addressable fire alarm system with Fire Command Station located in the main lobby. The building is fully sprinklered in accordance with the NYC Building code and each floor has an individual smoke exhaust system
HVAC/BUILDING SYSTEMS	New systems proposed for renovation, cooling tower		