

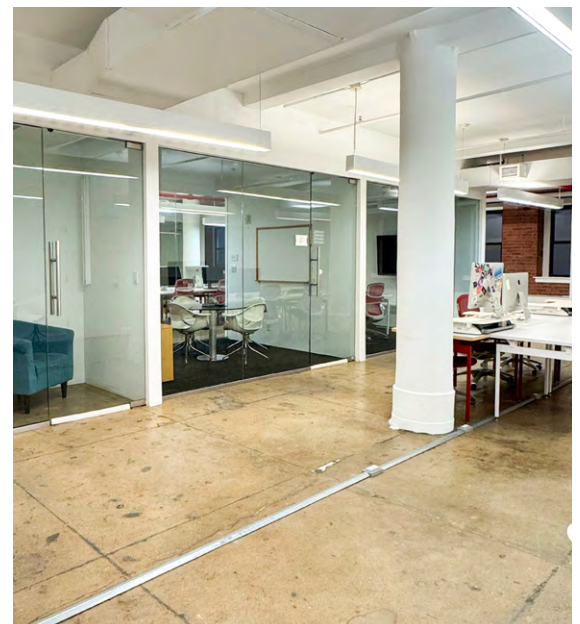
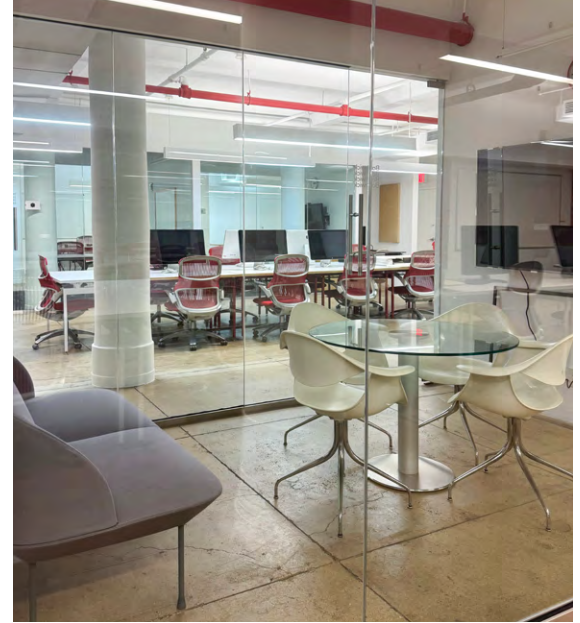
416 WEST 13TH STREET

MEATPACKING DISTRICT
NEW YORK CITY



THE LOWER LEVEL





Lower Level

3,614 RSF

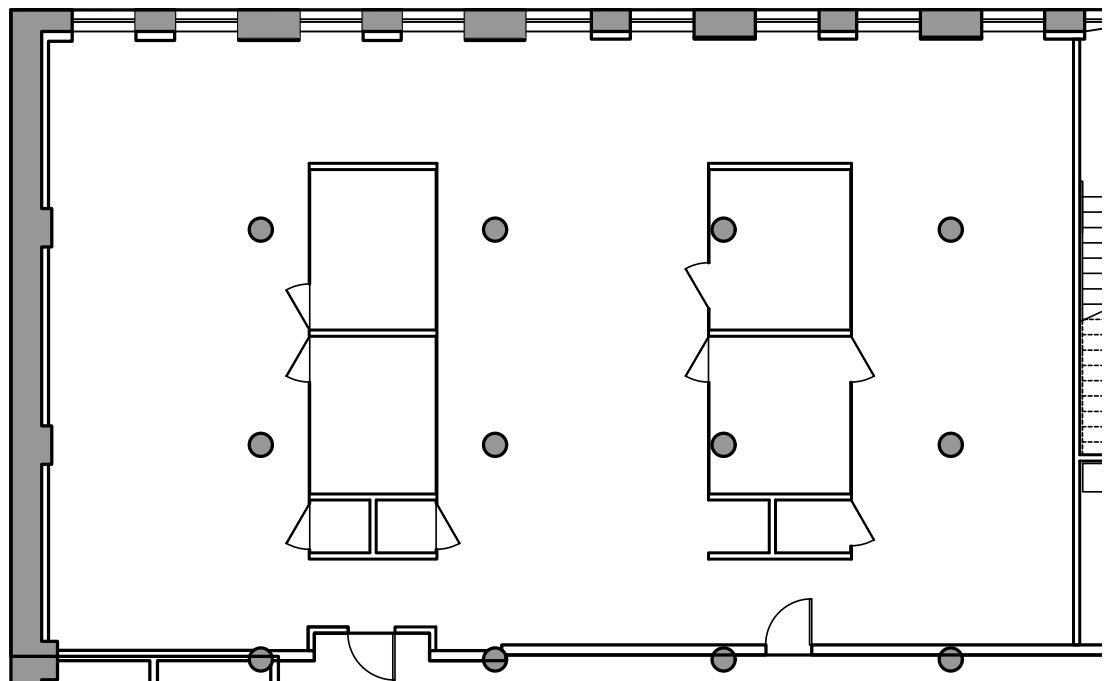
Possession

Immediate

Term	Rate
Negotiable	Upon request

Space Highlights

- Furnished, wired, and move-in ready.
- Features open seating with 30 desks, 4 offices/meeting rooms, and 3 phone rooms.
- Space features 12' ft ceiling, exposed brick, and polished concrete floors.
- Ownership will install a pantry, pending deal terms.





Meatpacking District

Once known as an industrial hub for its slaughterhouses, New York City's Meatpacking District has transformed into a dynamic neighborhood blending luxury, culture, and history. Centrally located within the Meatpacking District, 416 West 13th Street is surrounded by the headquarters of leading tech, media, commerce, and financial corporations, including Google, Apple, X (formerly Twitter), and more.

With immediate access to Citi Bikes, the West Side Highway, and the **123ACE** and **L** subway lines, 416 West 13th Street offers unparalleled convenience for both work and leisure.





416 WEST 13TH STREET

