

# 50 GREENE STREET

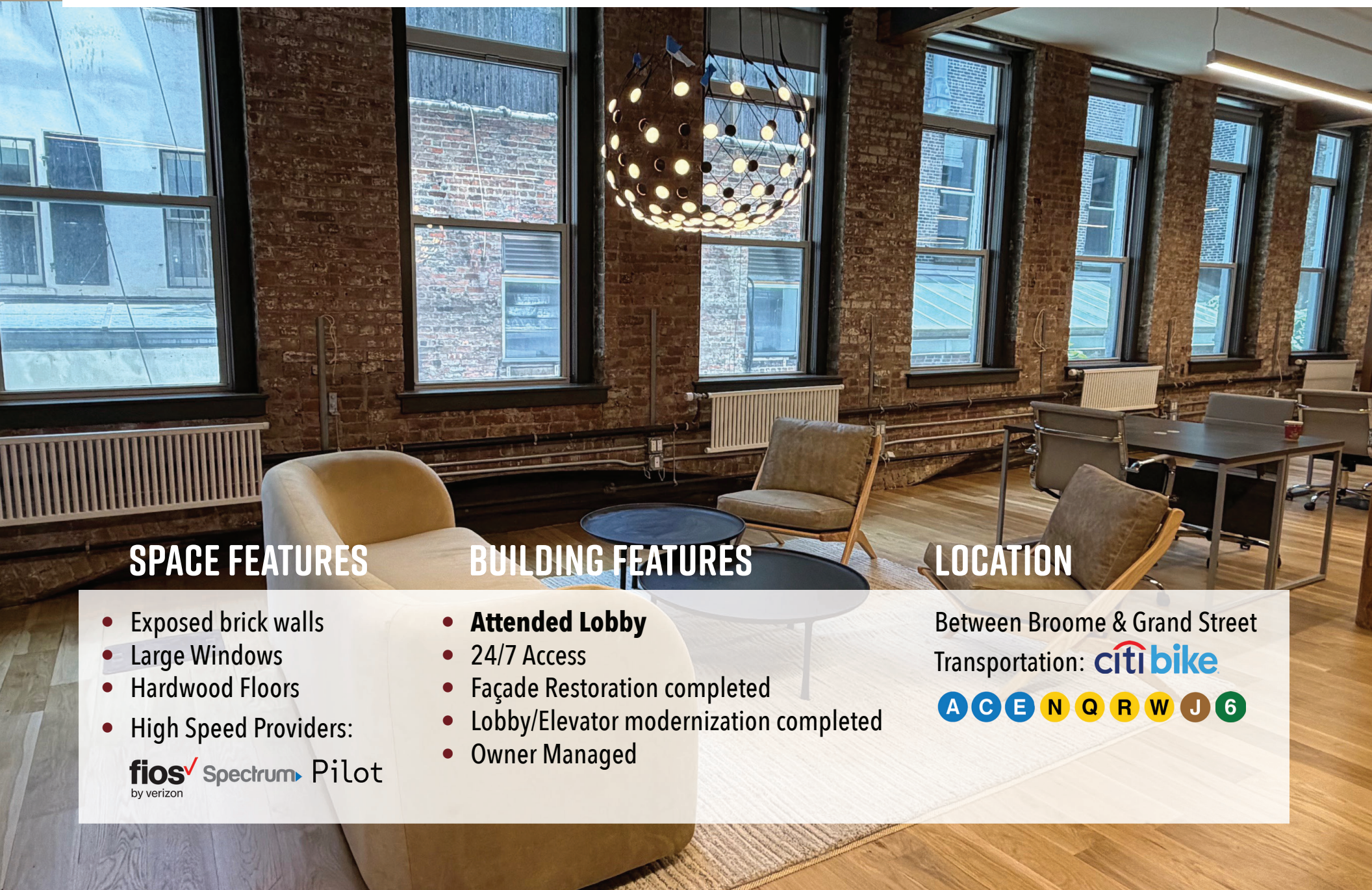
BETWEEN BROOME & GRAND STREET

PARTIAL 2ND FLOOR – 3,650 RSF



# 50 GREENE STREET

BETWEEN BROOME & GRAND STREET



## SPACE FEATURES

- Exposed brick walls
- Large Windows
- Hardwood Floors
- High Speed Providers:  
**fios** by verizon **Spectrum** **Pilot**

## BUILDING FEATURES

- **Attended Lobby**
- 24/7 Access
- Façade Restoration completed
- Lobby/Elevator modernization completed
- Owner Managed

## LOCATION

Between Broome & Grand Street

Transportation: **citi bike**



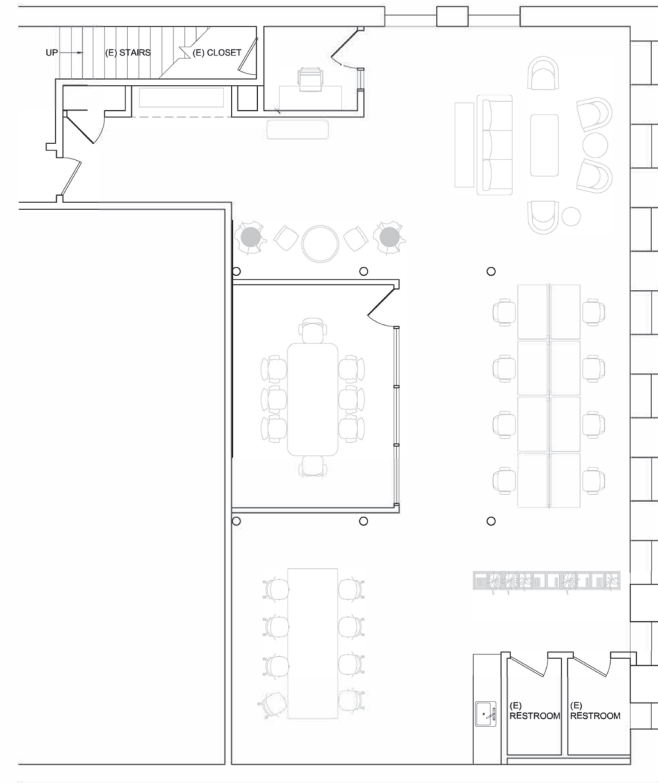
# 50 GREENE STREET

BETWEEN BROOME & GRAND STREET



# 50 GREENE STREET

BETWEEN BROOME & GRAND STREET



46-50 Greene Street

# 50 GREENE STREET

BETWEEN BROOME & GRAND STREET

