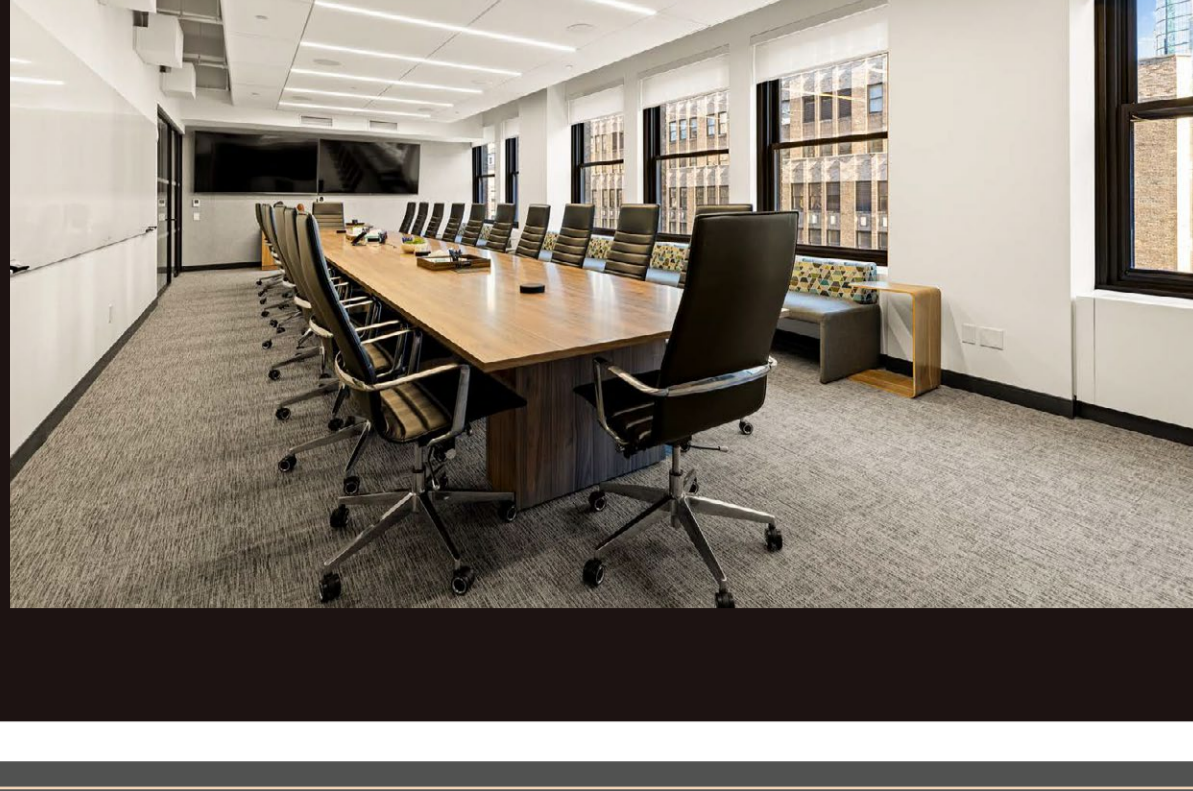


1359

BROADWAY

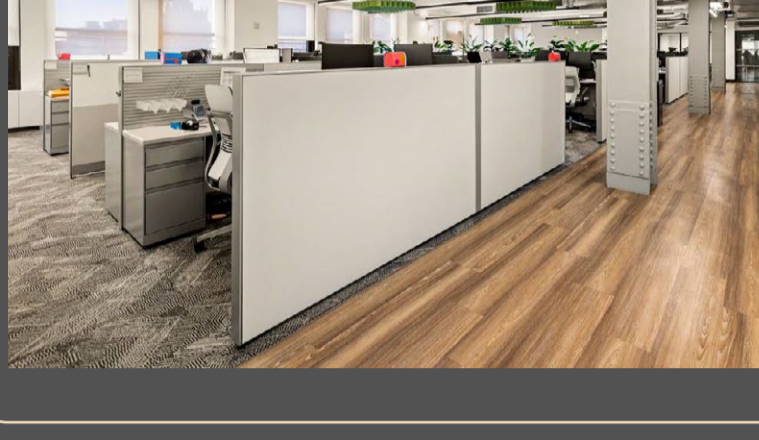
31,352 SF Sub-Sublease Available

Furnished | Move-In Ready



Designed for the Way You Work

Space Features



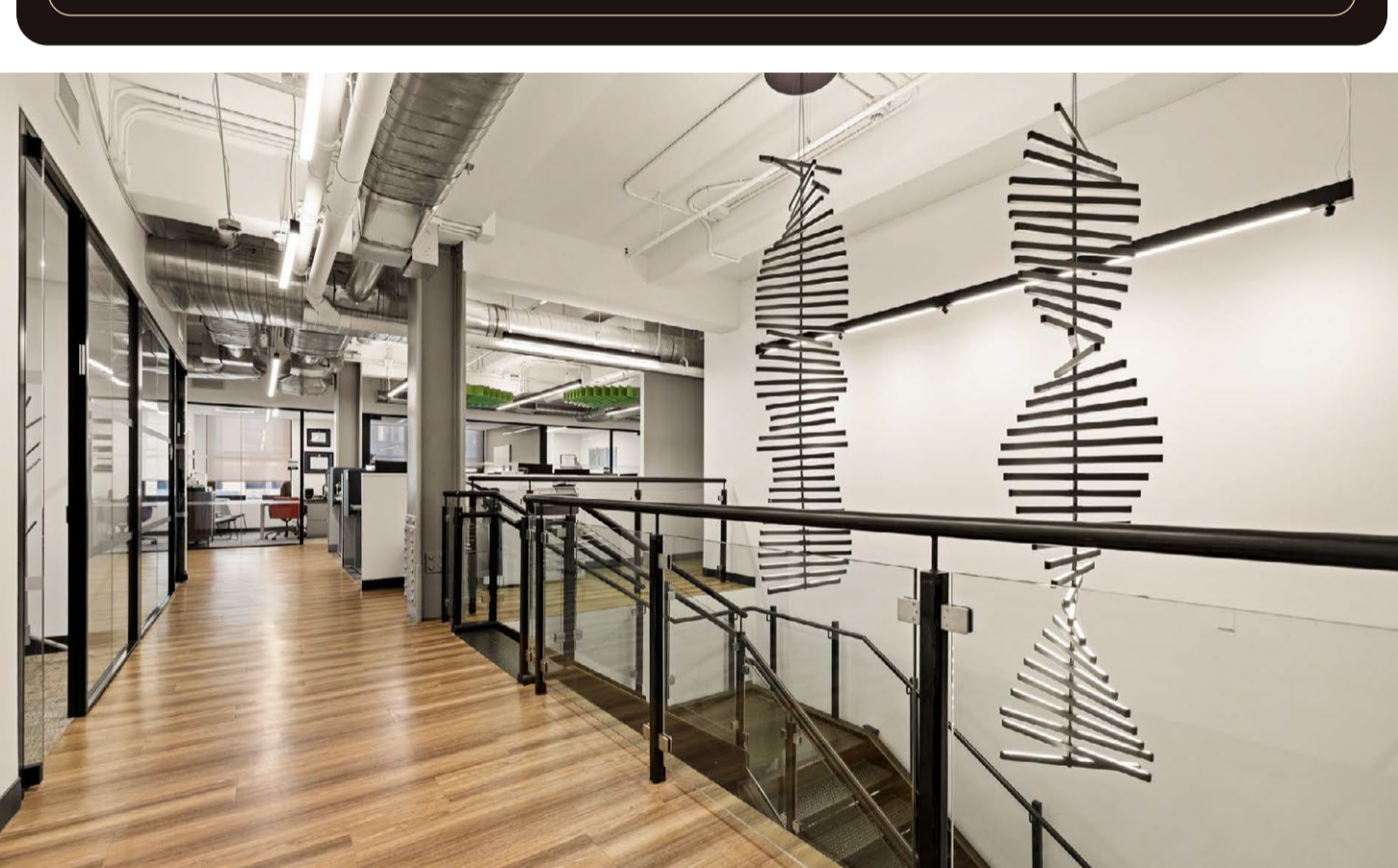
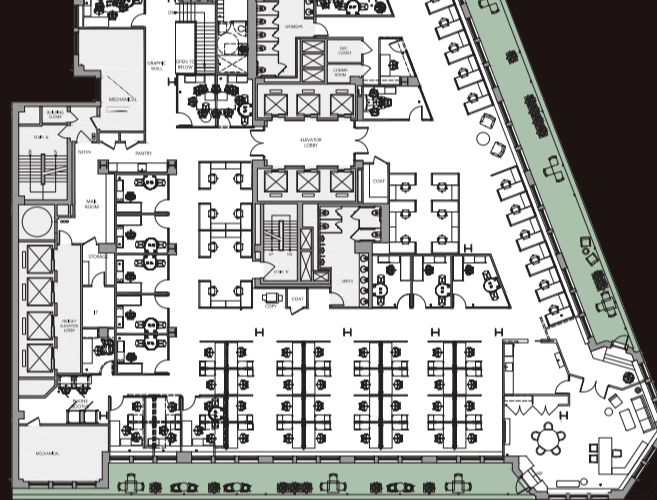
- Furnished plug and play opportunity
- Glass-fronted conference rooms and private offices
- Multiple breakout and collaborative spaces
- Two expansive terraces
- Interconnecting grand staircase
- Centrally located to mass transportation and abundance of shopping & dining options



21,294 SF

ENTIRE 18TH FLOOR

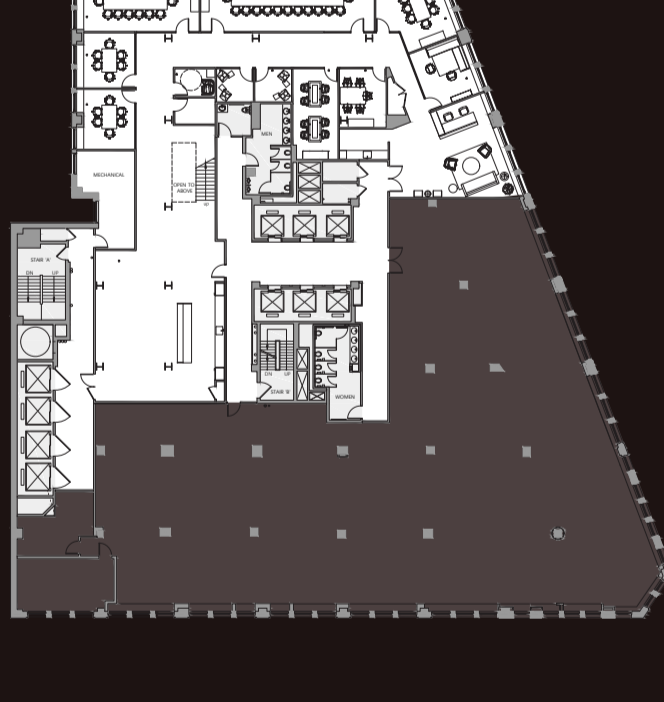
Executive Office	1
Private Offices	19
Meeting Rooms	5
Workstations	69
Phone Booths	4
Terraces	2
Pantry	1



10,058 SF

PARTIAL 17TH FLOOR

Boardroom	1
Conference Rooms	3
Meeting Rooms	4
Phone Rooms	2
Pantry	1



Everything Within Reach

in the Heart of the Commuter Triangle

Surrounded by an exceptional mix of neighborhood amenities with upscale retail and acclaimed dining options

5 minute walk from Bryant Park

Steps from Herald Square & Penn Station

