

**241 WEST
30TH STREET
NEW YORK, NY
ENTIRE
3RD FLOOR**



4,000 SF TURN-KEY OFFICE SPACE

Prime Penn District Location

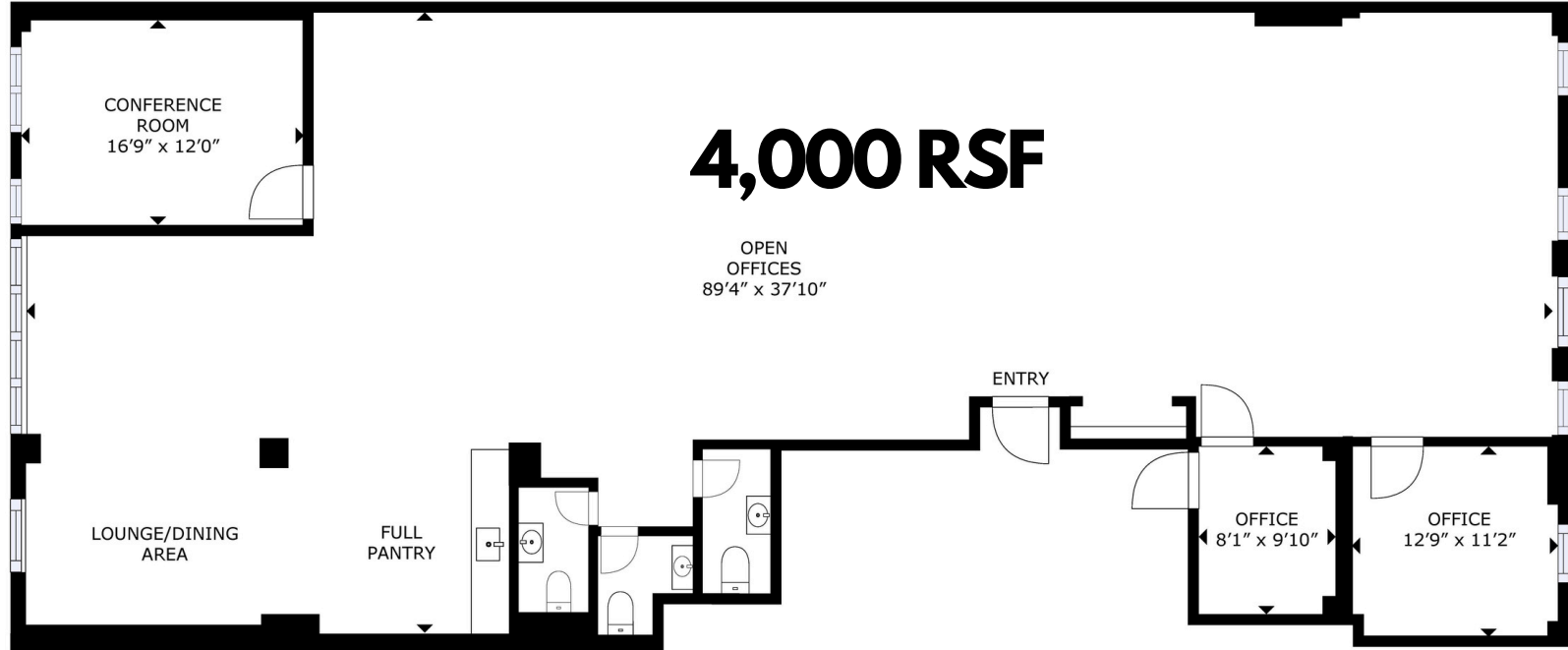
- Entire 3rd Floor - Total of 4,000 SF Office For Lease
- 2 Private Offices with One Large Conference Room, 3 Private Restrooms, Full Pantry, Lounge and Large Open Office Areas
- Diffused LED Lighting Throughout
- 24/7 Access
- 24/7 Tenant-Controlled HVAC Including Supplemental Heat
- Electric and Low Voltage Distributed Throughout
- Located on West 30th Street between 7th and 8th Avenues
- Unparalleled Transportation Access with Immediate Proximity to Penn Station Providing Access to:



- Immediate Possession
- Price Upon Request

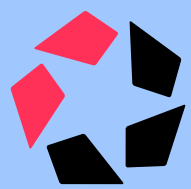


241 WEST 30TH STREET FLOOR PLAN



4,000 RSF

FLOOR PLAN



Matterport®

3D VIRTUAL WALK-THROUGH

CLICK HERE



**241 WEST
30TH ST
NEW YORK, NY**

