

# 7 WEST 51<sup>ST</sup> STREET

POPULAR

POPULAR

JLAR

7 WEST 51<sup>ST</sup>

**4,342 RSF  
AVAILABLE**

Ideal office or medical space

# AVAILABILITIES

---

~~ENTIRE 2ND FLOOR~~ 5,090 RSF — **LEASED**

~~ENTIRE 3RD FLOOR~~ 4,342 RSF

~~ENTIRE 6TH FLOOR~~ 3,300 RSF — **LEASED**



## BUILDING FEATURES

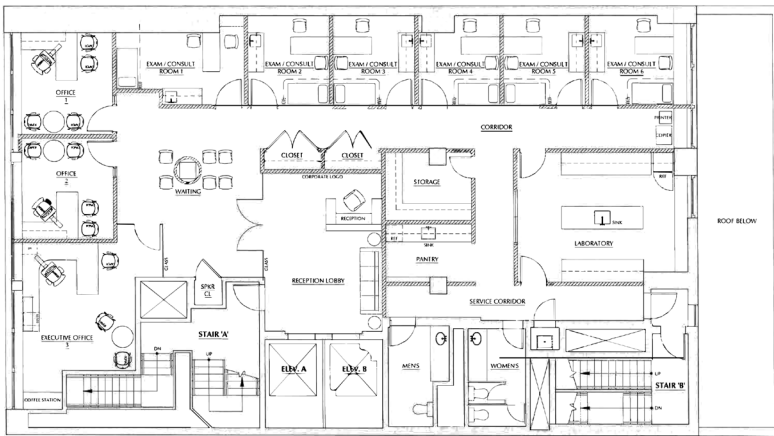
---

---

- » Institutional ownership
- » Newly renovated lobby
- » Newly renovated elevators
- » New building façade
- » Attended lobby

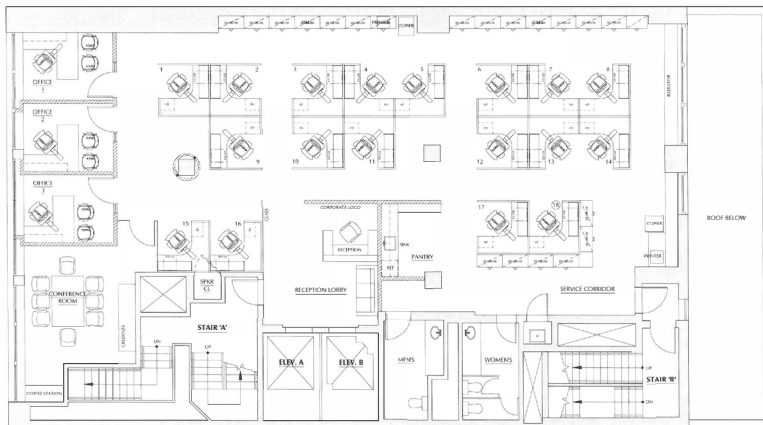
Entire 3<sup>rd</sup> Floor | 4,342 SF

# FULL FLOOR PROPOSED LAYOUTS



|                  |          |
|------------------|----------|
| Exam Room        | <b>6</b> |
| Laboratory       | <b>1</b> |
| Executive Office | <b>1</b> |
| Office           | <b>2</b> |
| Pantry           | <b>1</b> |

## 3<sup>rd</sup> Floor Medical Proposed Plan



|                 |           |
|-----------------|-----------|
| Conference Room | <b>1</b>  |
| Workstations    | <b>18</b> |
| Office          | <b>3</b>  |
| Pantry          | <b>1</b>  |

## 3<sup>rd</sup> Floor Office Proposed Plan

# AREA MAP



3 Min walk to 5th Ave Station



3 Min walk to Rockefeller Ctr Station



11 Min walk to Grand Central Terminal



16 Min walk to Port Authority Terminal