

# New Pre-Built Unit

FOR LEASE

55 East 59th St – Delmonico Plaza (Between Park and Madison Avenues)



## 4,555 RSF

Partial 6th Floor

## Immediate

Availability

## Flexible

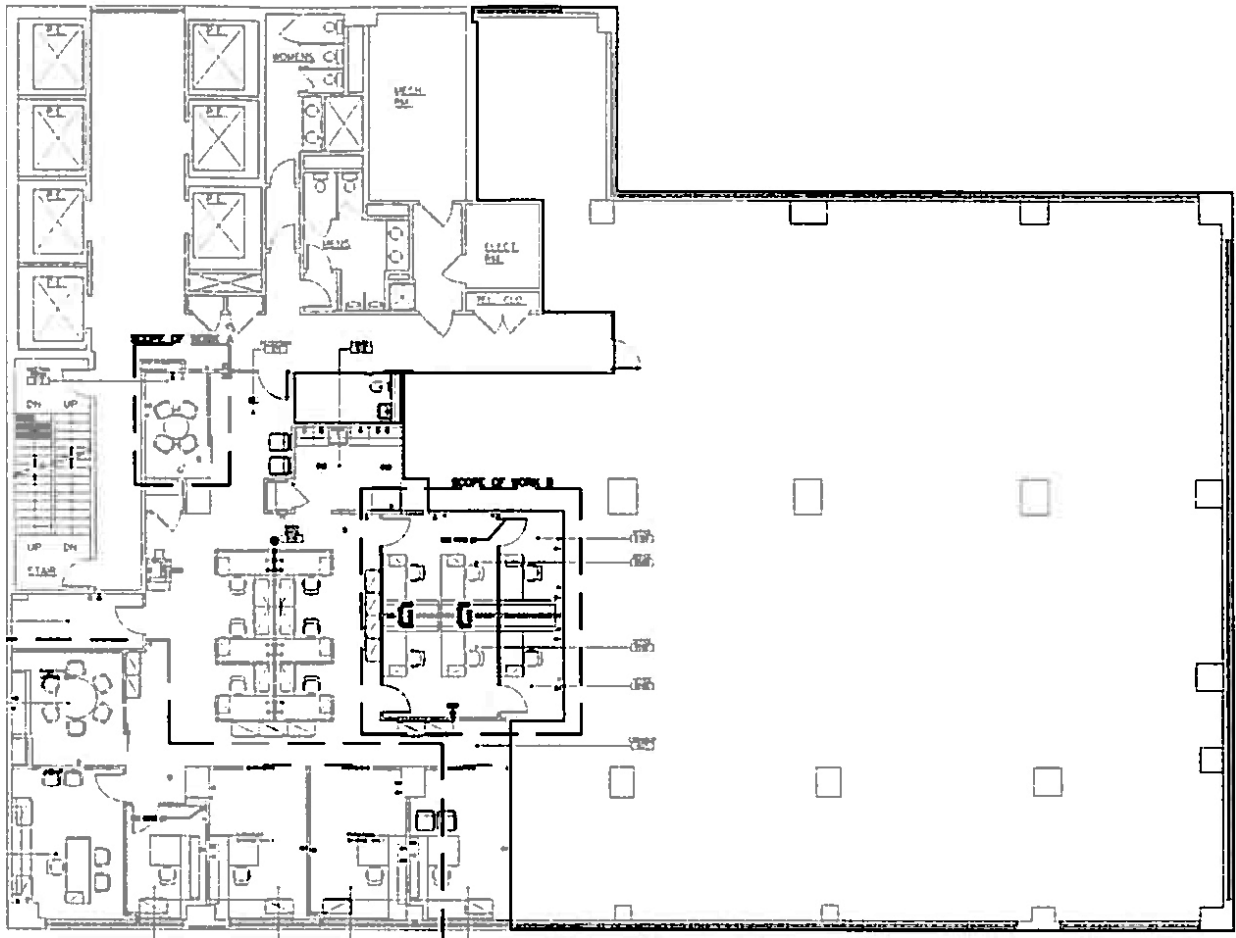
Term

### SPACE PROFILE

- Move-in condition
- Financially strong Landlord
- Space is built with 9 standard offices, 1 conference room, open area with space for 8-10 workstations, and pantry
- Easily accessible to 4, 5, 6, N, Q, R, and F subway lines

## PARTIAL 6TH FLOOR

4,555 SF



**59th Street**

### SPACE OVERVIEW

- 9 standard offices
- 1 conference room
- 1 open area with space for 8-10 workstations
- 1 pantry



