

IMMEDIATE OCCUPANCY FOR SHORT-TERM DEAL



Current Conditions

599 Broadway

Southwest Corner of West Houston Street

SoHo Creative Space - 4,620 RSF
High Ceilings, Operable Windows
Fantastic Public Transportation Access





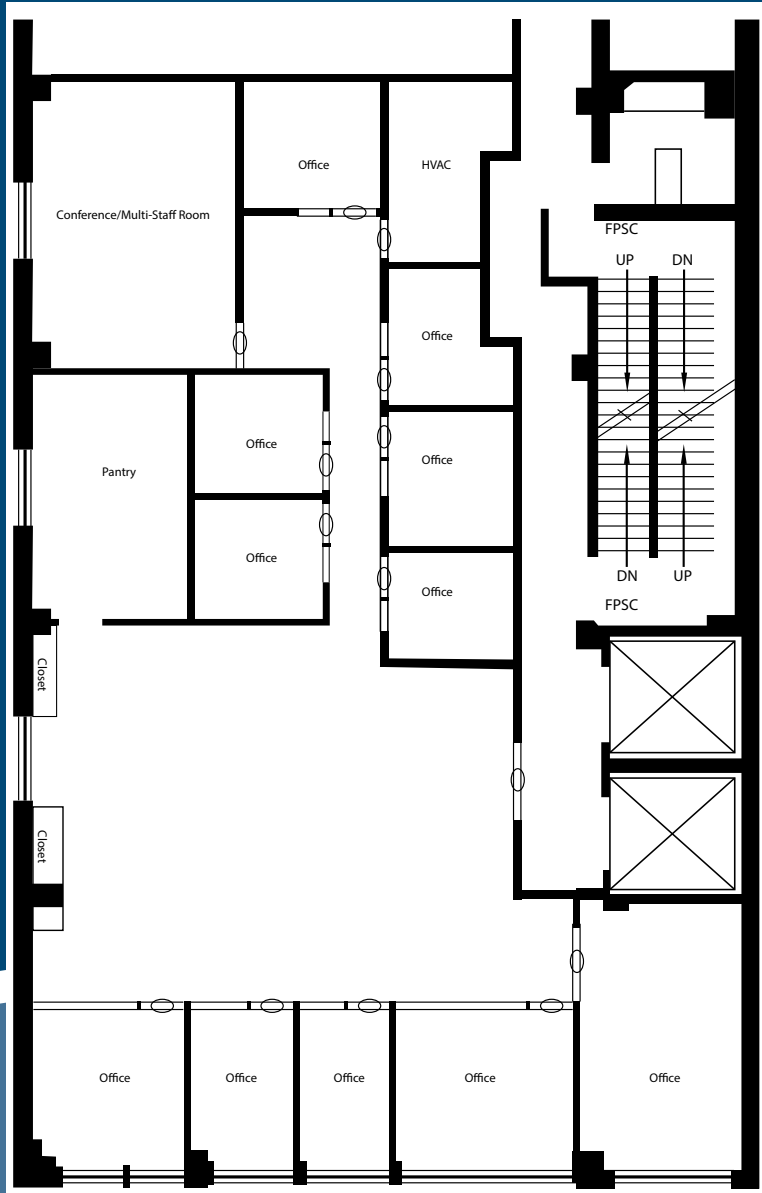
Partial 9th Floor: 4,620 rsf

Possession: Immediate

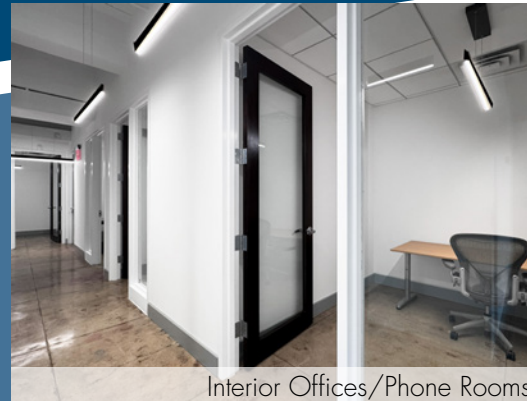
Rent: Call or email for info

- Fully built creative space with high ceilings - direct presence off elevator
- Existing build-out features (5) glass-front offices, (6) smaller interior offices/phone rooms, conference room plus a full wet pantry - **delivered partially furnished**
- Corner unit with oversized operable windows facing Broadway and South offering abundant natural light
- Atop **B D F M 6** subways; one block from Prince Street station **R W** lines
- Located along Broadway's luxury retail shopping corridor; vicinity of Washington Square Park and NY University Campus

PARTIAL 9TH FLOOR - 4,620 RSF
(AS-BUILT)



Conference/Collaboration Room



Interior Offices/Phone Rooms



Wet Pantry

Floor Plan not to scale, for display purposes only