



555

WEST 25TH STREET

BETWEEN TENTH AND ELEVENTH AVENUES

BUILDING OVERVIEW

- Full floor office space available
- Tenant controlled HVAC
- Private keyed elevator entry/video security system
- On-site super
- 400 AMPS per floor
- 3 Sides of light on every floor
- 12' Ceiling heights



555 WEST 25TH STREET

Partial 2nd Floor

SIZE

4,700 RSF

POSSESSION

Immediate

ASKING RENT

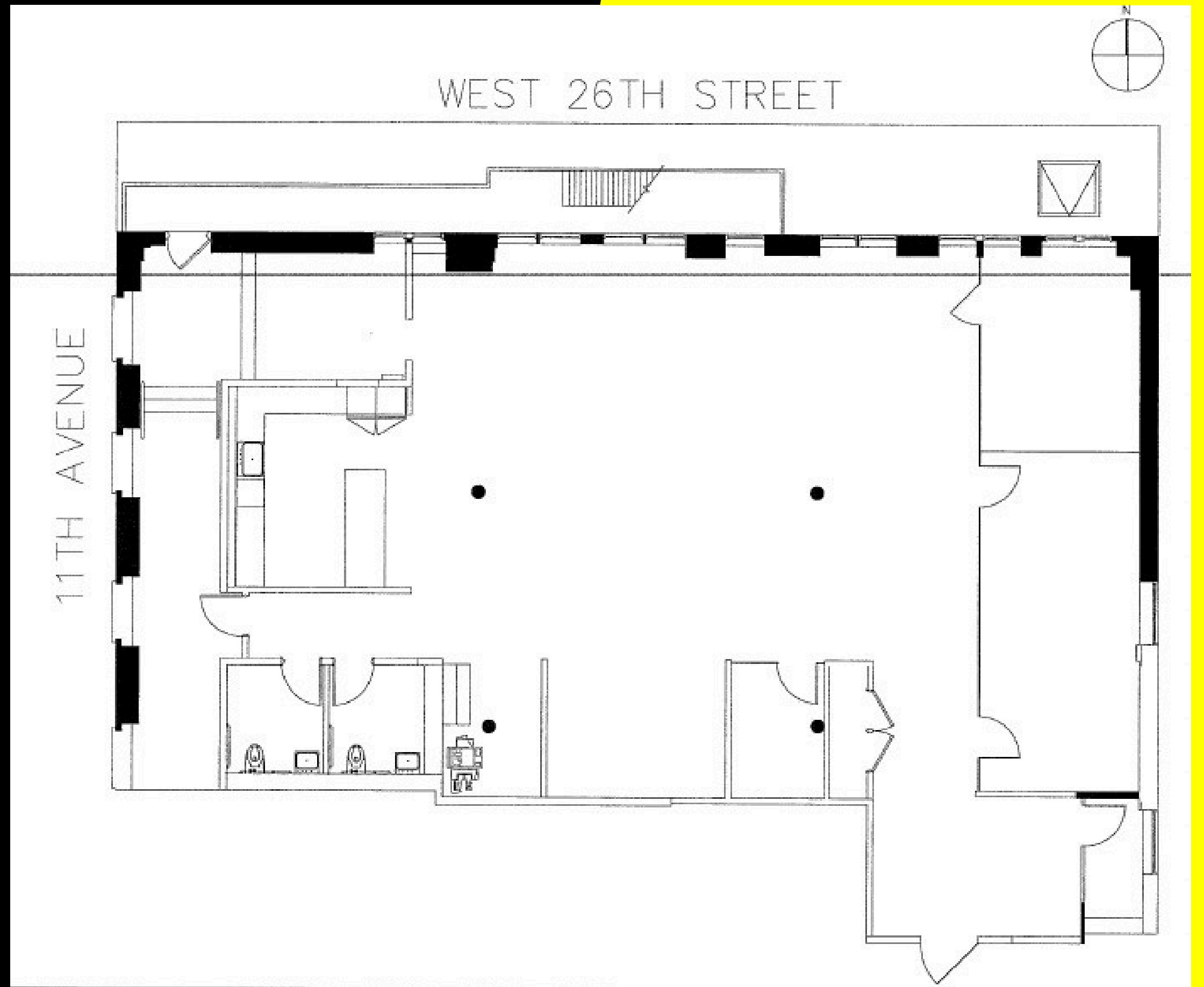
\$45 PSF

TERM

3-10 Years

HIGHLIGHTS

- Fully furnished
- High-end pantry
- Newly renovated
- High exposed ceilings



555 WEST 25TH STREET

Partial 2nd Floor

