

489
FIFTH
AVENUE

NEW
AMENITY CENTER
OVERLOOKING
BRYANT PARK

ENTIRE 14TH FLOOR **4,988 RSF**



ENTIRE 14TH FLOOR | **4,988 RSF** | Pre-Built Finishes



AMENITY CENTER



AVAILABLE FLOORS

SIZE

POSSESSION

ENTIRE 14TH FLOOR

4,988 RSF

IMMEDIATE



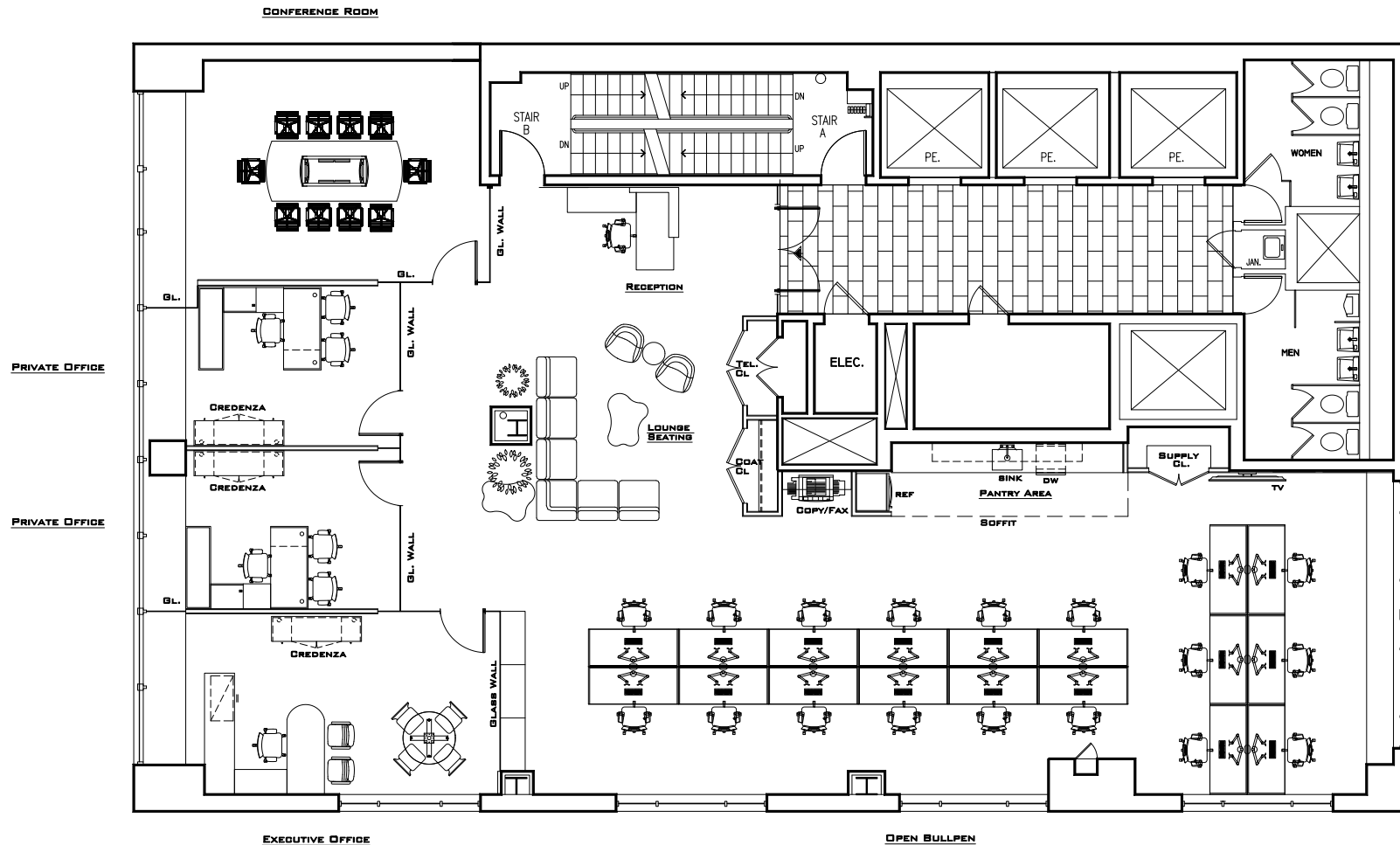
BUILDING FEATURES

- Landlord recently completed a full-floor amenity center, which includes a communal lounge/multi-purpose space for meetings and presentations, a high-end bar/pantry, small meeting rooms, and a fitness area with bathrooms and showers
- Spectacular light and views overlooking Bryant Park and New York Public Library
- Recently upgraded lobby and elevators
- Multiple Citi Bike docks in close proximity
- Steps from Bryant Park, New York Public Library, boutique hotels, high-end restaurants, shopping and fitness clubs
- Walking distance to Grand Central, Penn Station and Port Authority
- Walking distance to subways: 4 5 6 S 7 B D F M 1 2 3

SPACE FEATURES

- **14th Floor:** Brand-new creative pre-built with polished concrete floors, exposed ceilings, an open pantry, and full glass fronts.

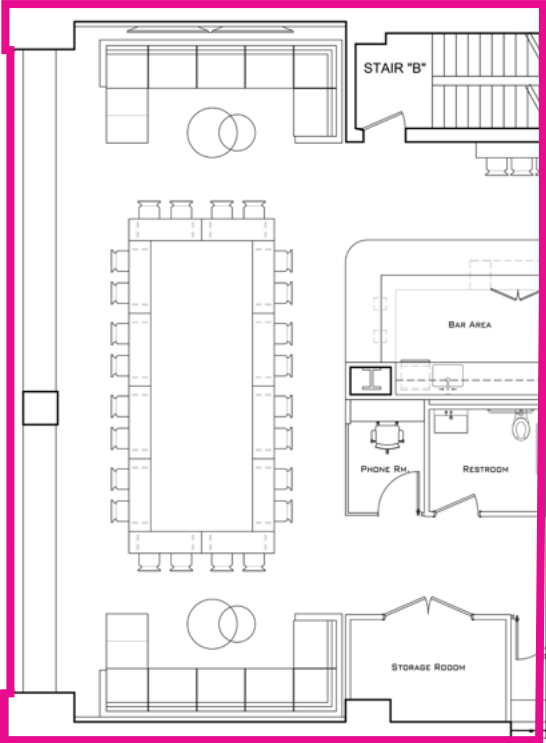
ENTIRE 14TH FLOOR | 4,988 RSF | Pre-Built Plan



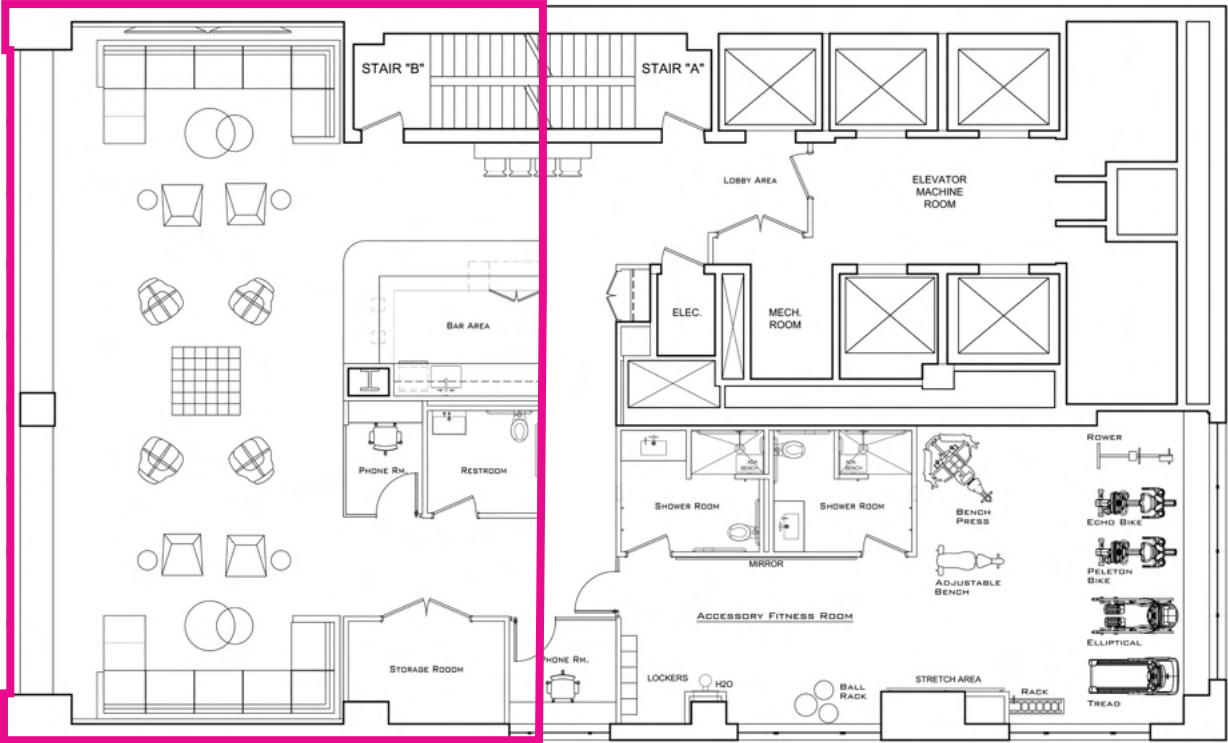
489
FIFTH
AVENUE

AMENITY CENTER

CONFERENCE SETUP



LOUNGE SETUP



489
FIFTH
AVENUE