

89 Fifth Avenue

Between 16th & 17th Streets

Welcome to Lower Fifth Avenue!!

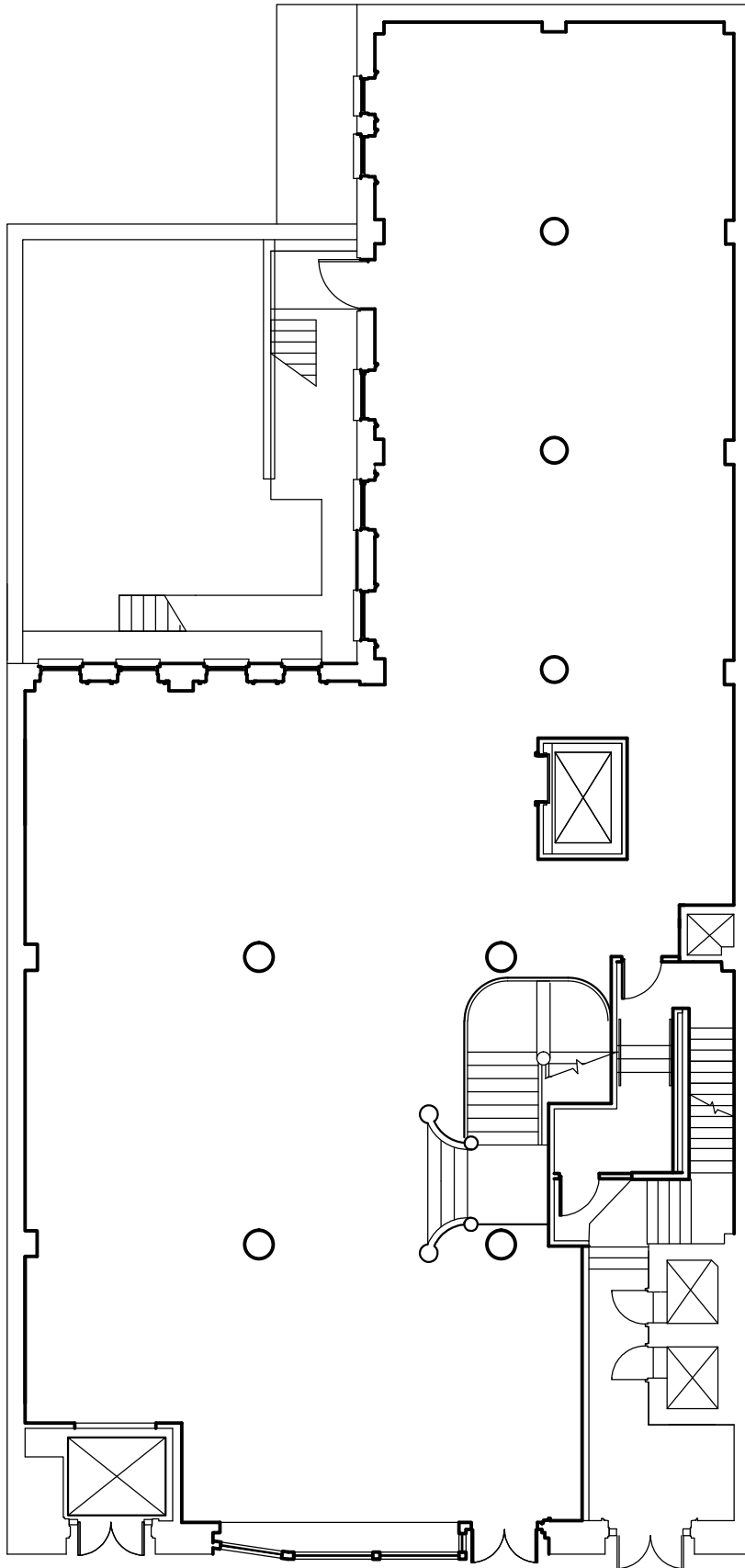
Ladies Historic Mile Location

- ❑ 5,200 Sq Ft Ground
- ❑ 5,200 Sq Ft 2nd Floor
- ❑ 3,000 Sq Ft Bsmt (storage)
- ❑ Available January 2026
- ❑ 10 Year Term
- ❑ Rental upon request



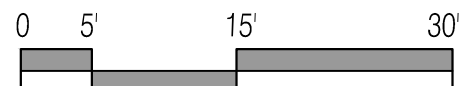
Former ARITZIA store. This is a highly trafficked area in the heart of the trendy Flatiron District with many national retailers.

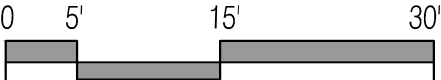
Neighboring Tenants Include: J.Crew, Lululemon, Vuori, NEW flagship Nespresso store opening 2025, Zara, Bandier, EATALY, Club Monaco, H&M, Madewell, Gap, RHONE, Banana Republic, Theory, Eileen Fischer, Harry Potter Store, Lego Flagship and many more...

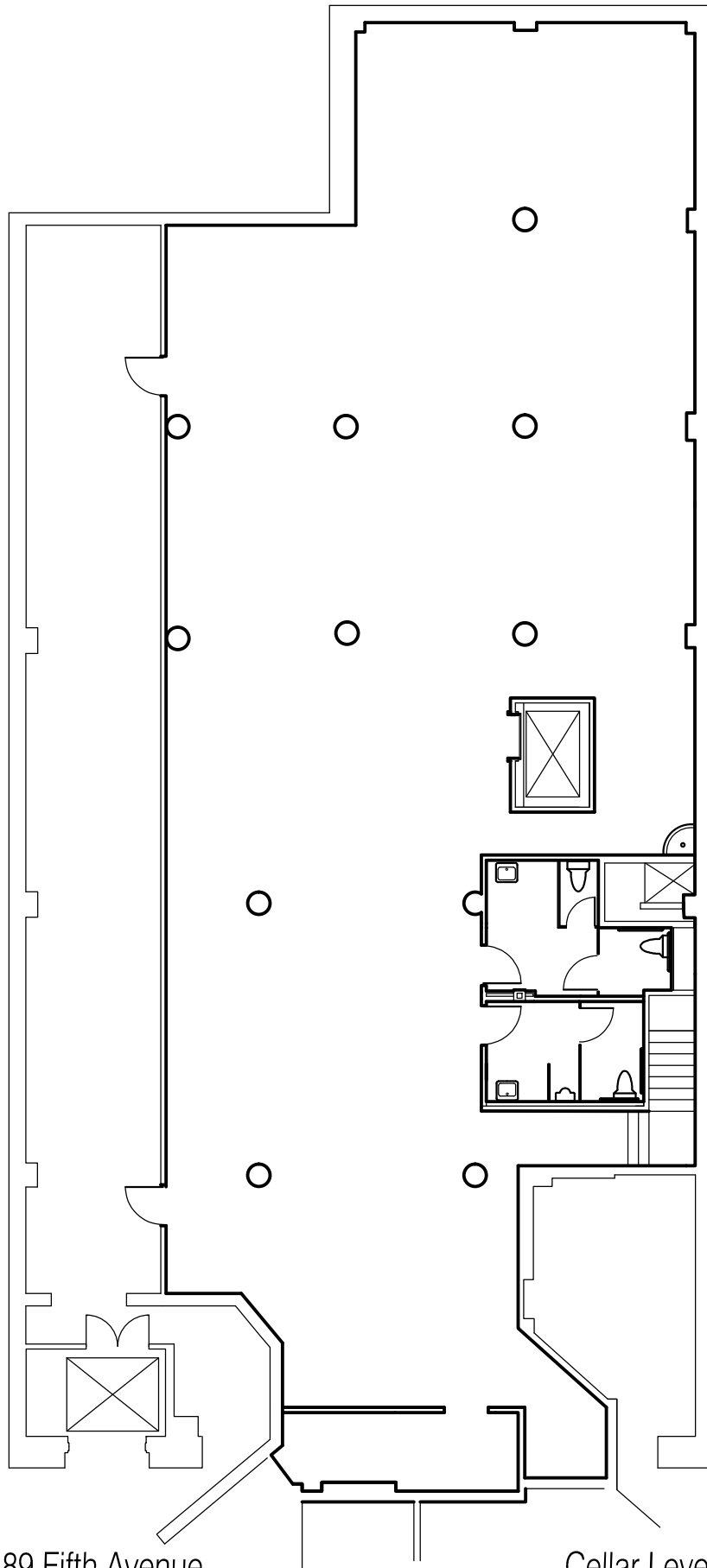


89 Fifth Avenue

Ground Floor







89 Fifth Avenue

Cellar Level

