

# 271 MADISON AVENUE

Between 39<sup>th</sup> & 40<sup>th</sup> street



## Entire 16<sup>th</sup> Floor - 5,250 RSF

- Brand new prebuilt space featuring one glass front windowed office and glass front conference room.
- Great views and light throughout the floor.
- Open bullpen for up to 24 people.
- Large, collaborative pantry and lounge area.
- Large utility/storage area.
- Polished concrete floors and high ceilings.
  - Tenant controlled air conditioning.



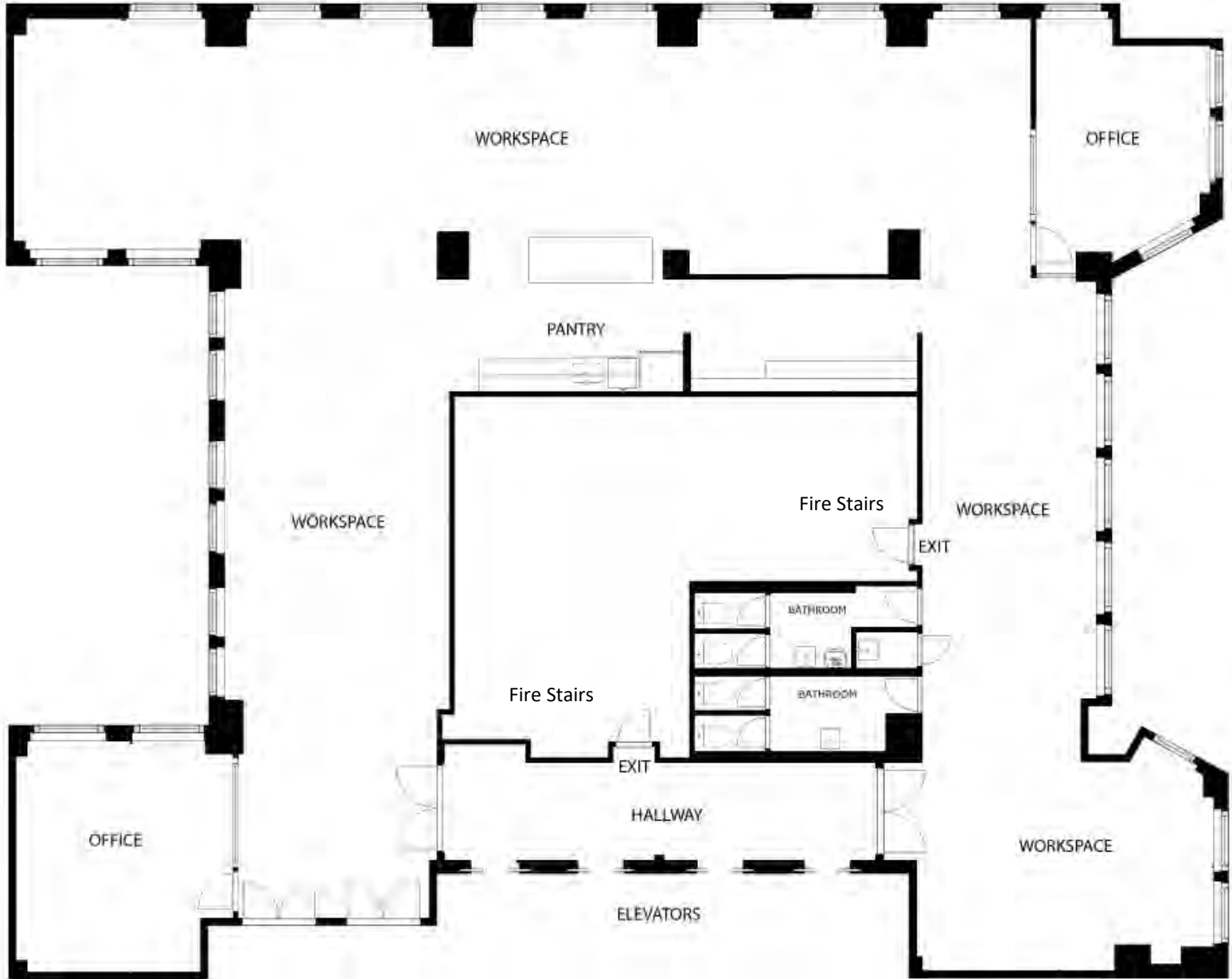
**Rent:** Upon Request

**Terms:** 3 – 10 Years

**Possession:** Immediate

# 271 MADISON AVENUE

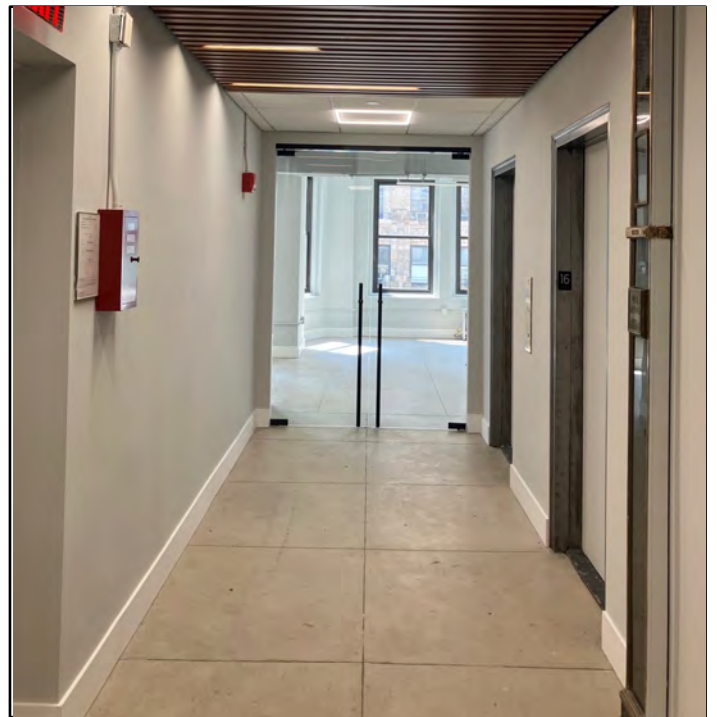
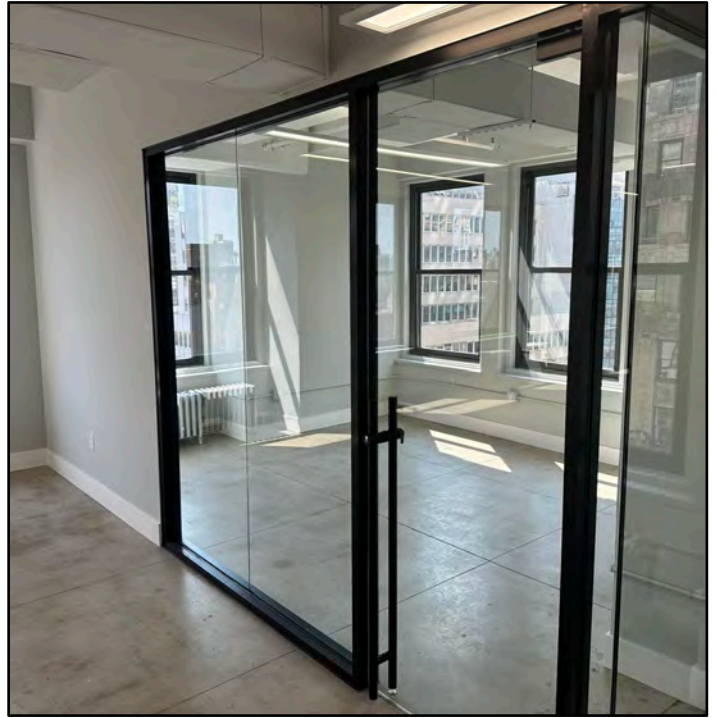
Between 39<sup>th</sup> & 40<sup>th</sup> Street



Entire 16th Floor  
271 Madison Avenue

# 271 MADISON AVENUE

Between 39<sup>th</sup> & 40<sup>th</sup> Street



# 271 MADISON AVENUE

Between 39<sup>th</sup> & 40<sup>th</sup> Street

