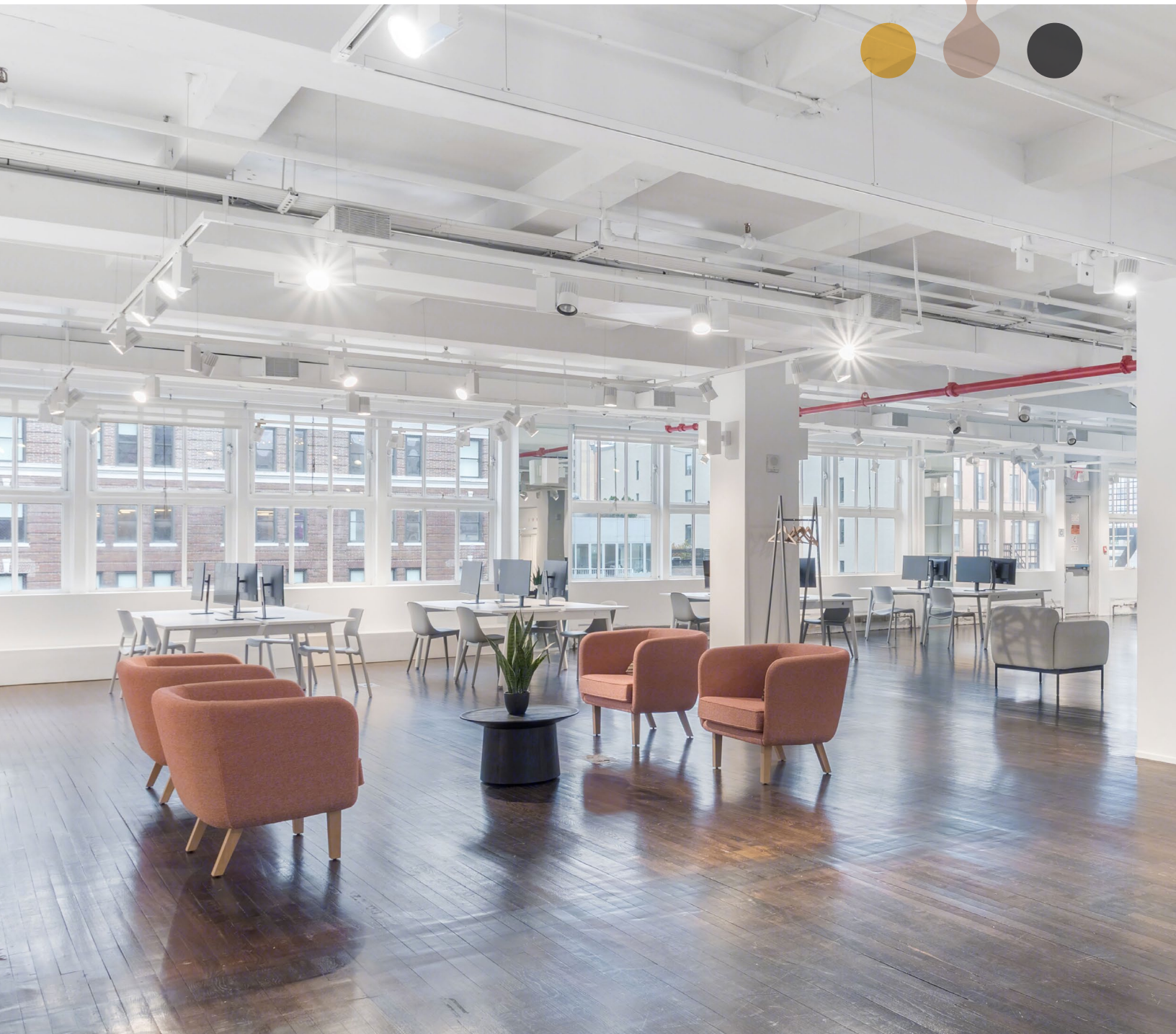
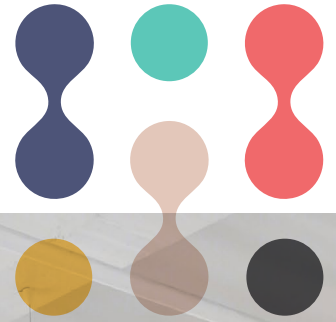


220 W 19 Street Chelsea | NYC



220 West 19th Street Chelsea | NYC

220 West 19th Street is a boutique, 12-story office building in the heart of Chelsea. Built in 1910, it is owned and occupied by Red Circle, the parent company of Diesel. Known as the Diesel HQ for North American operations, it has also housed other renowned fashion brands like Maison Margiela.

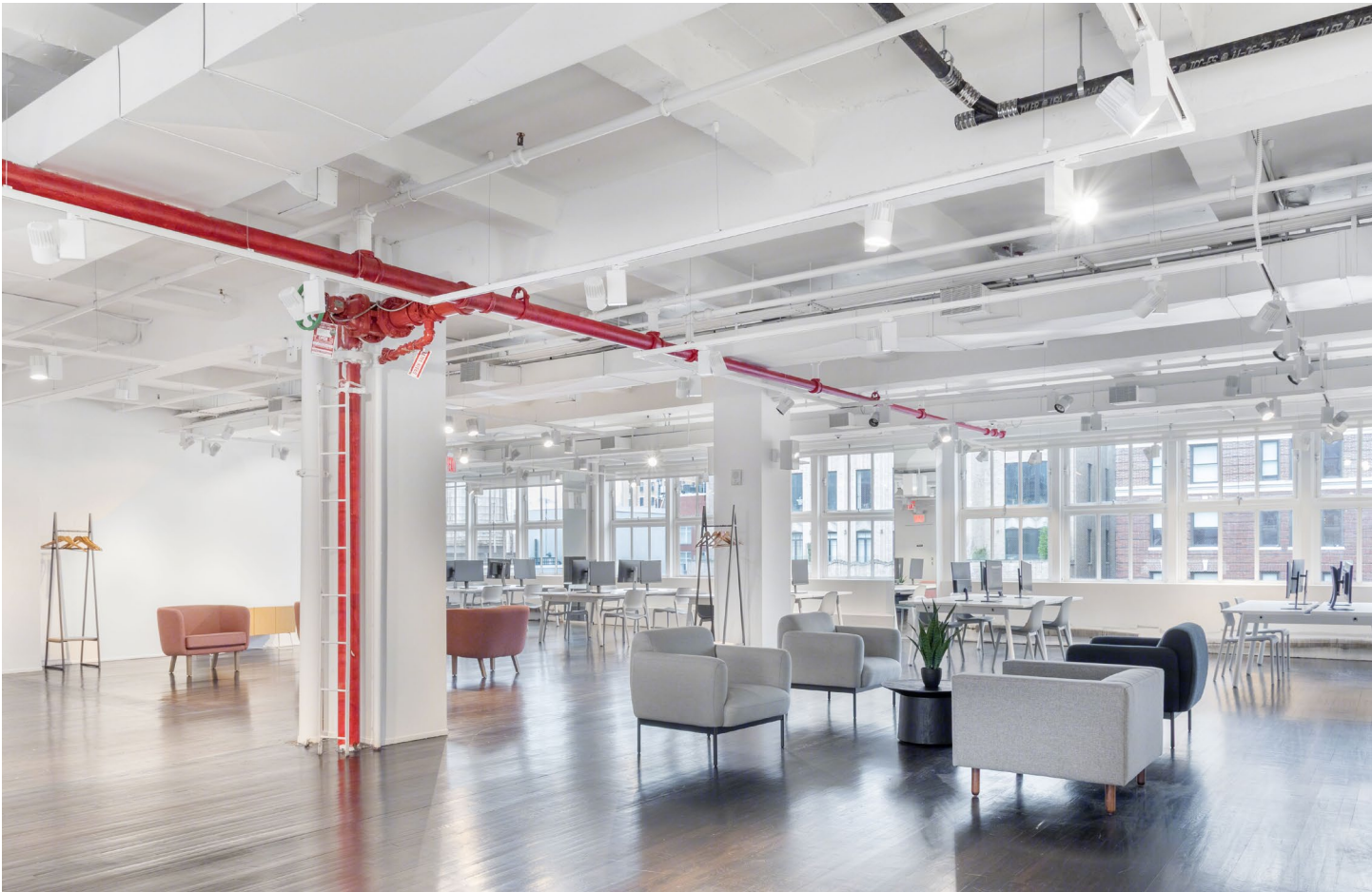
The well-maintained building recently underwent capital improvements to the façade, lobby, turnstiles, and elevator system. It offers quick access to attractions like the Highline, Chelsea Market, and Union Square Park, as well as amenities such as fitness centers, fine dining, shopping, cafés, and nightlife.

Easily accessible, the property is walking distance from 9 major subway lines (**1 2 3 A C E F M** and **L**), the PATH, and is surrounded by Citi Bike stations, ensuring an easy commute to and from all areas of Manhattan.

Building Highlights

- Owner occupied
- Recent capital improvements include facade, lobby renovations, and elevator systems
- 24/7 attended lobby
- 12' slab-to-slab heights with large operable windows to allow plenty of natural light
- Crunch Fitness at the base offering tenant promotions





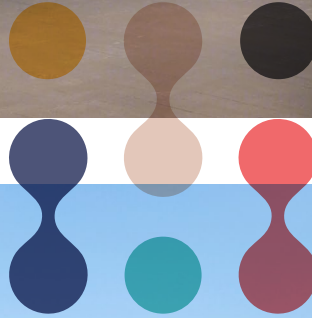


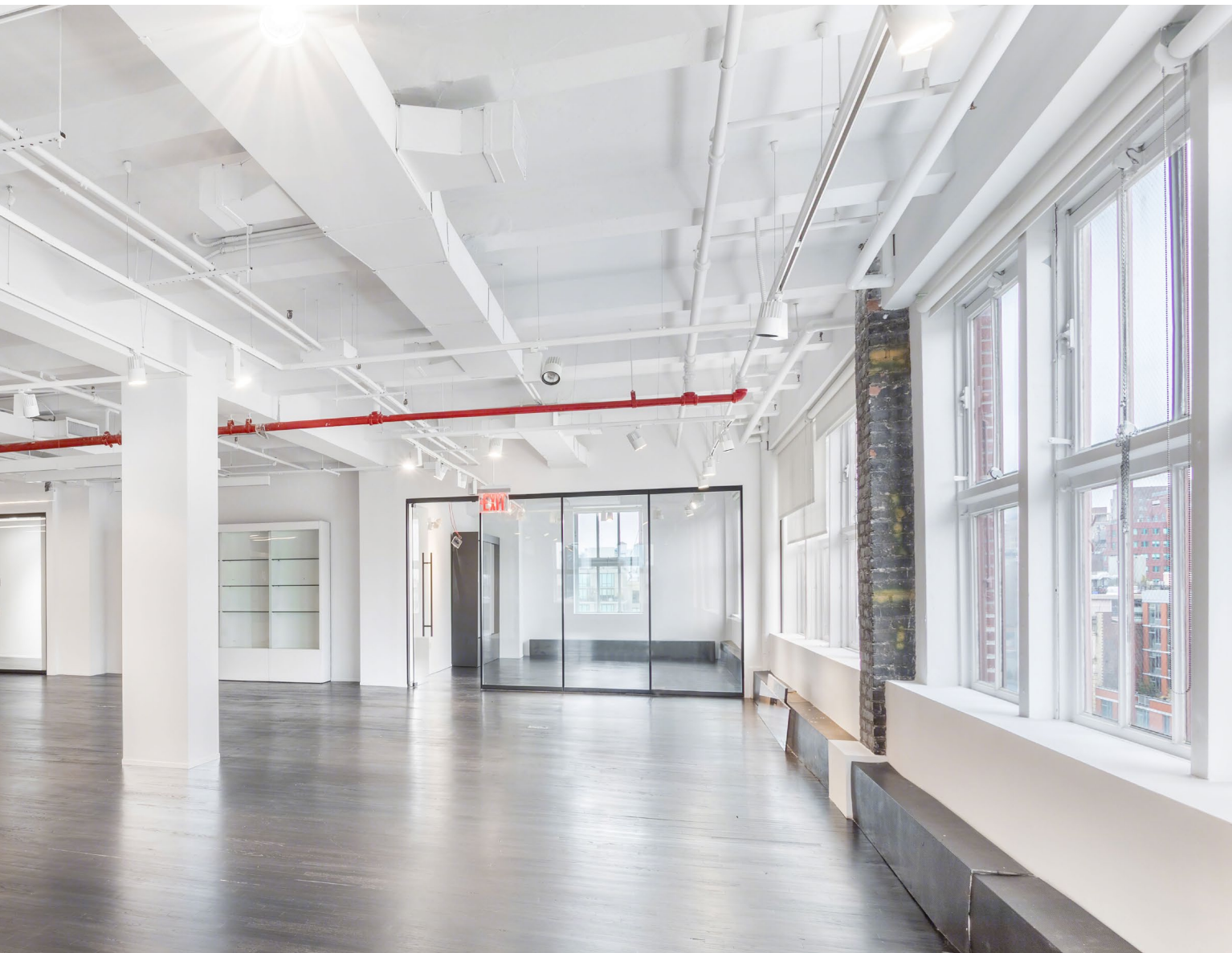
Current Availabilities

Partial 11th Floor 5,481 RSF*

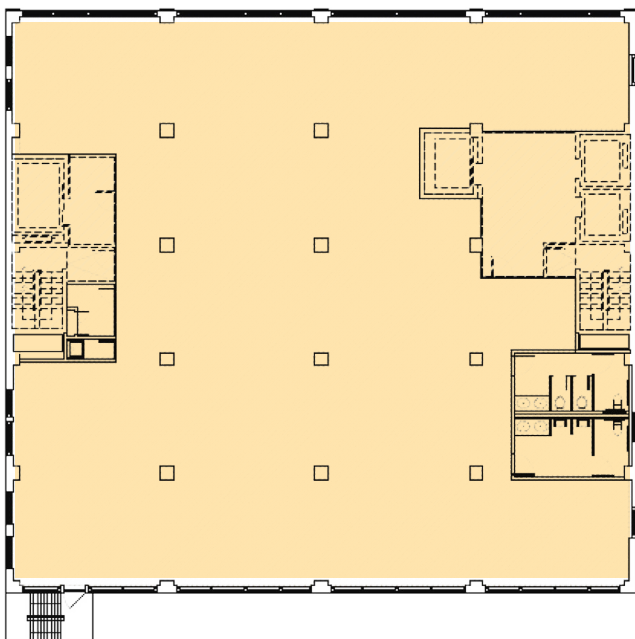
Entire 10th and Partial 11th Floors

- Floors feature existing showroom space
- Landlord will provide new building installation
- High ceilings, an abundance of natural light from oversized windows, along with panoramic views including Hudson Yards and Midtown
- Contiguous space totaling 14,789 RSF

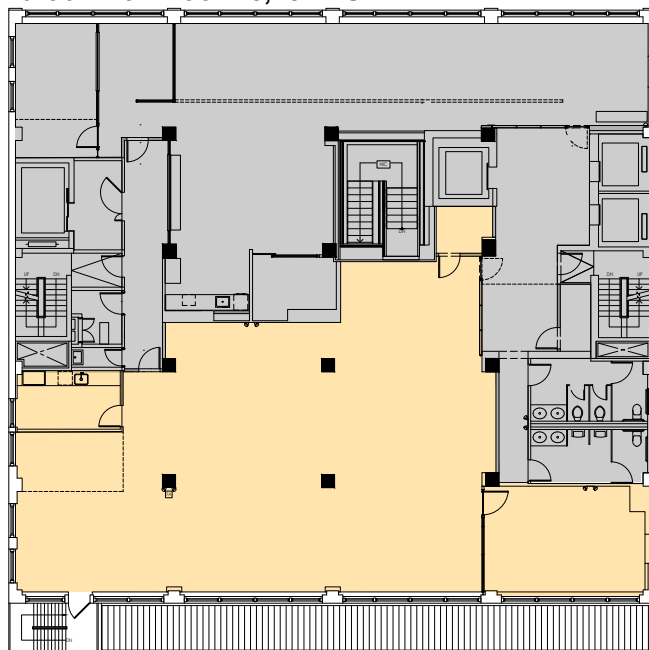


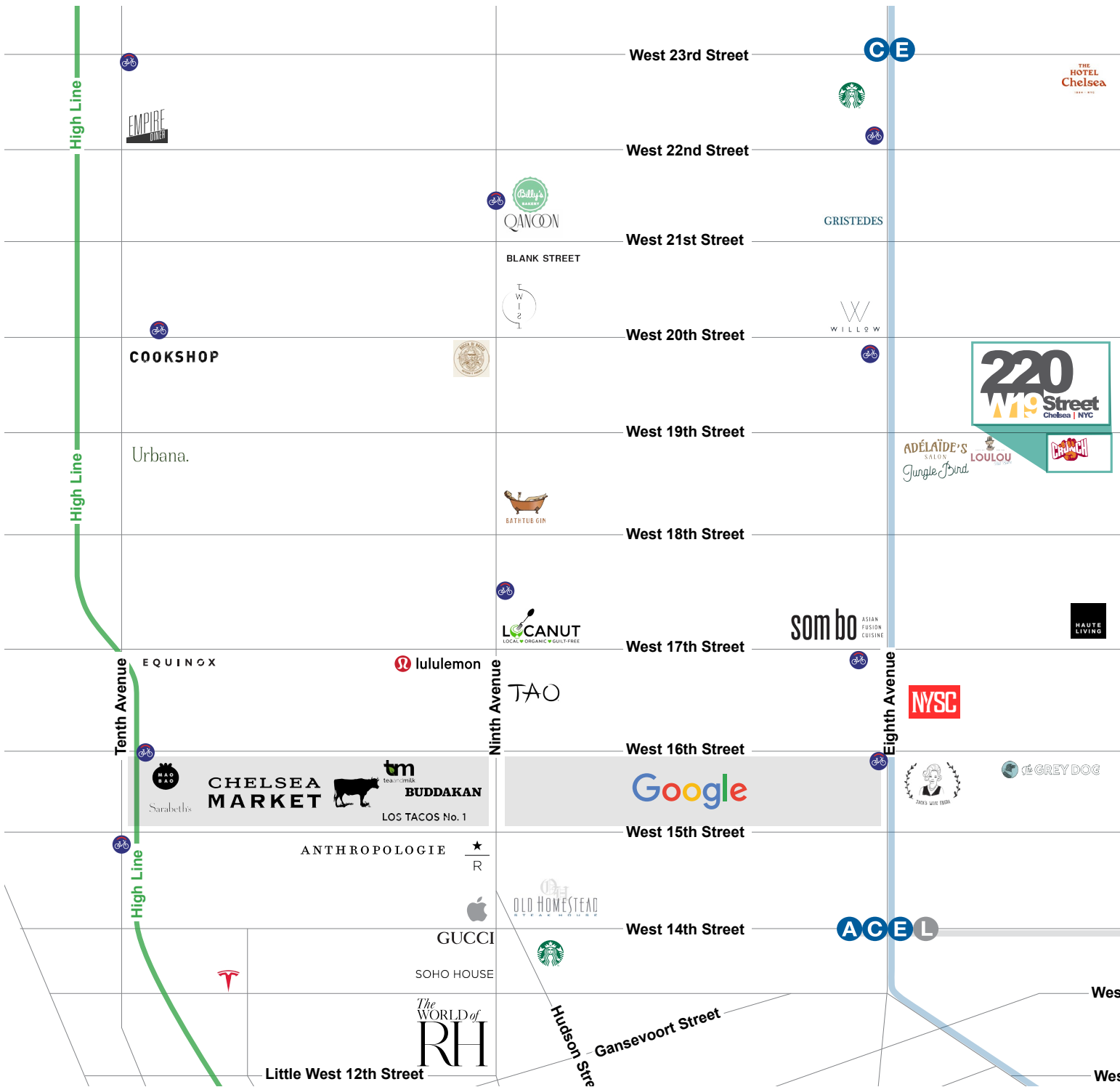


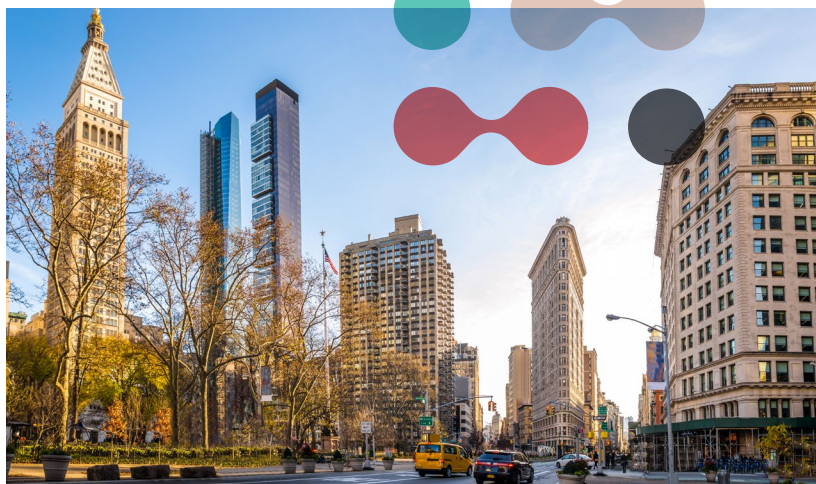
Entire 10th Floor (divisible) - 9,308 RSF



Partial 11th Floor - 5,481 RSF







220 W 19 Street Chelsea | NYC

