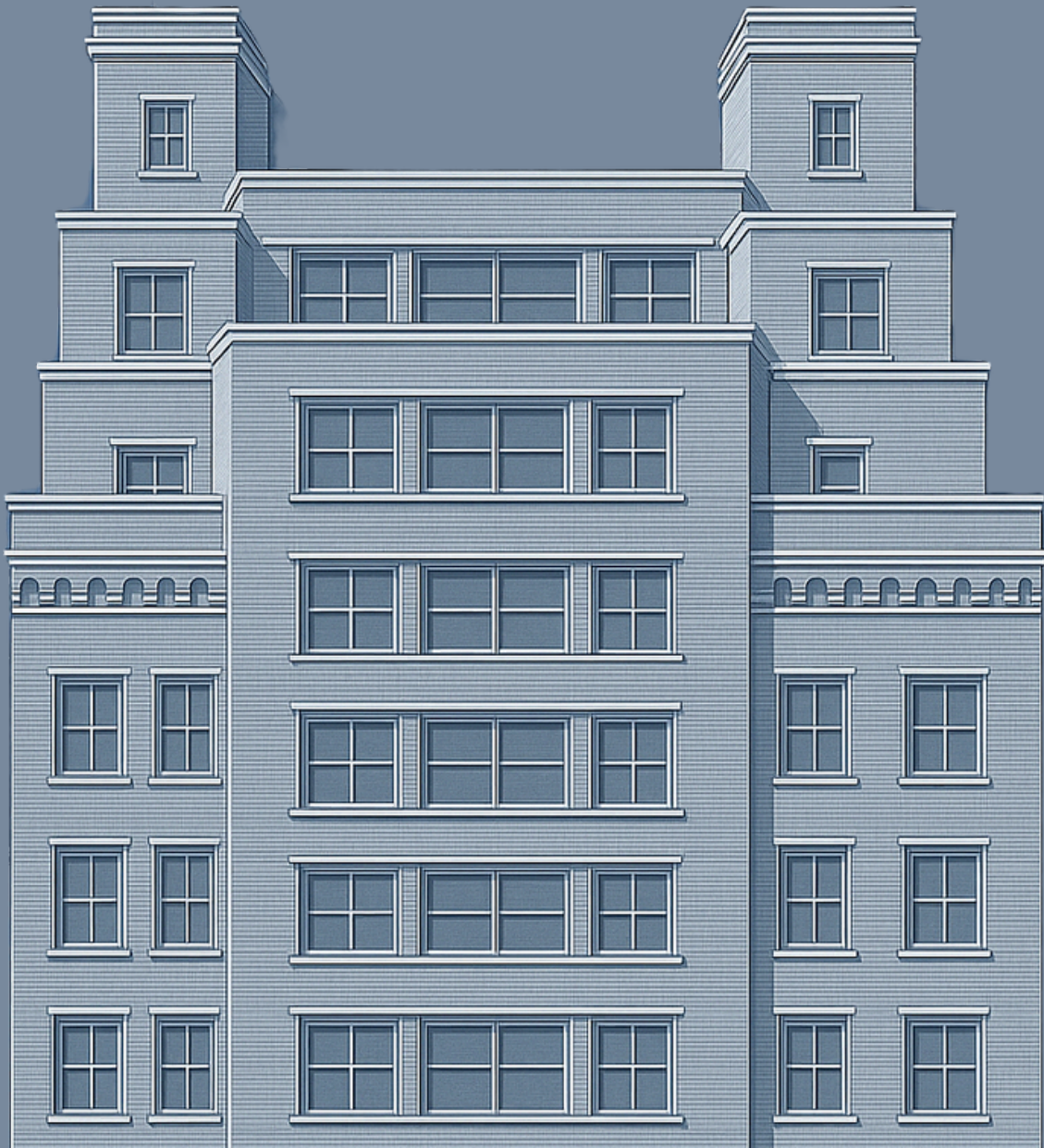


315WEST

THIRTY-FIFTH



A NEW STANDARD
ON 35th STREET

315WEST

THIRTY-FIFTH

315 West 35th Street delivers a bold fusion of heritage and innovation. This boutique pre-war building offers expansive layouts, natural light, and an authentic New York backdrop—ideal for creative teams, forward-thinking startups, and established firms looking to make a statement in Midtown’s rising west side.



315WEST

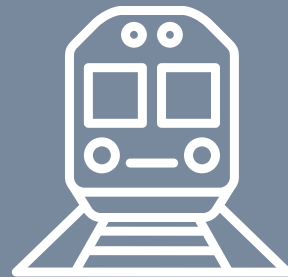
THIRTY-FIFTH

WHERE ELEVATION MEETS OPPORTUNITY.

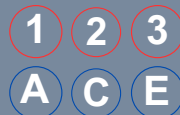
Located in the heart of Midtown Manhattan, 315 West 35th Street is a pre-war gem reimagined for the modern workforce. This historic building offers open, light-filled office spaces with high ceilings and a contemporary edge. Blending classic architectural character with modern upgrades, 315 provides an inspiring environment for companies seeking both style and performance in a prime location near Penn Station and Hudson Yards.



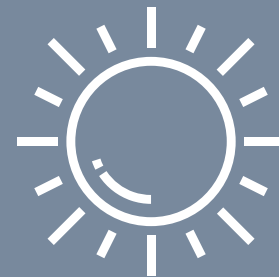
ACCESS



PUBLIC TRANSIT



Penn Station
LIRR



NATURAL LIGHT



PRIME LOCATION
Midtown West



ROOFTOP



315 WEST
THIRTY-FIFTH

AVAILABLE SPACE

FLOOR

SQUARE FEET

EIGHTH FLOOR

5,723 SF



EIGHTH FLOOR

OPEN CONCEPT | NATURAL LIGHT | EN SUITE ELEVATOR |
WET PANTRY | TWO PRIVATE RESTROOMS

5,723 SF | ASKING: PLEASE INQUIRE



AMENITIES

HOST YOUR NEXT MEETING OR EVENT IN OUR PRIVATE OUTDOOR ROOFTOP LOUNGE AND FULLY-EQUIPPED CONFERENCE CENTER.