

# 43

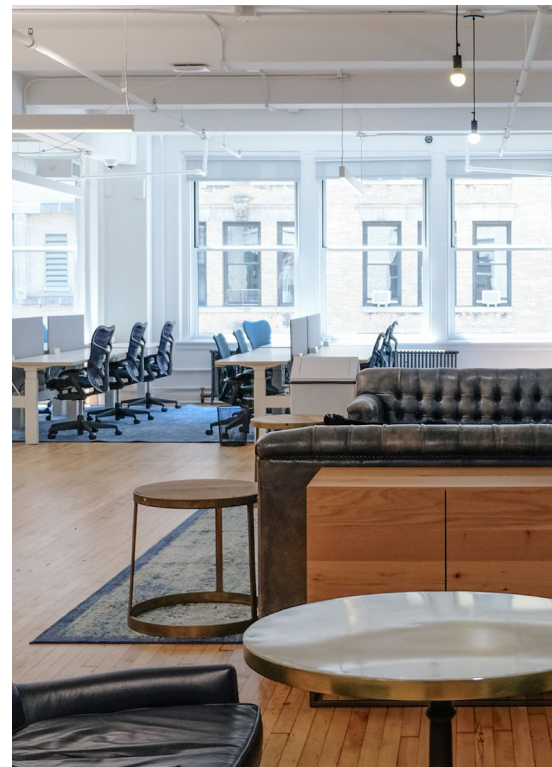
WEST 24<sup>TH</sup> STREET  
FLATIRON



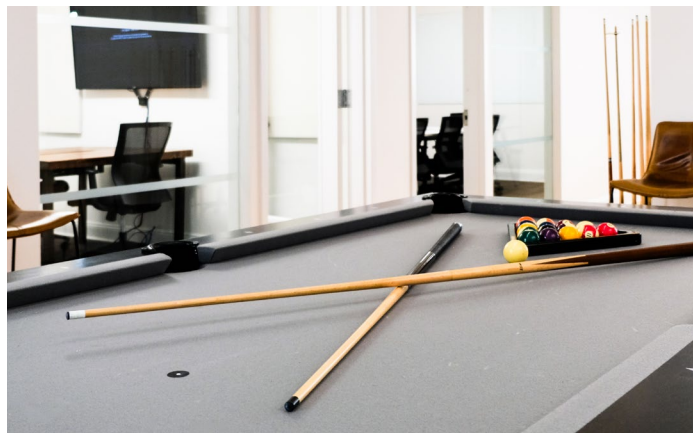
**5<sup>TH</sup> FLOOR SUBLEASE** | 6,250 SF

*Plug & Play Sublease Steps From Madison Square Park*









## PREMISES

5<sup>th</sup> floor sublease | 6,250 SF

## AVAILABILITY

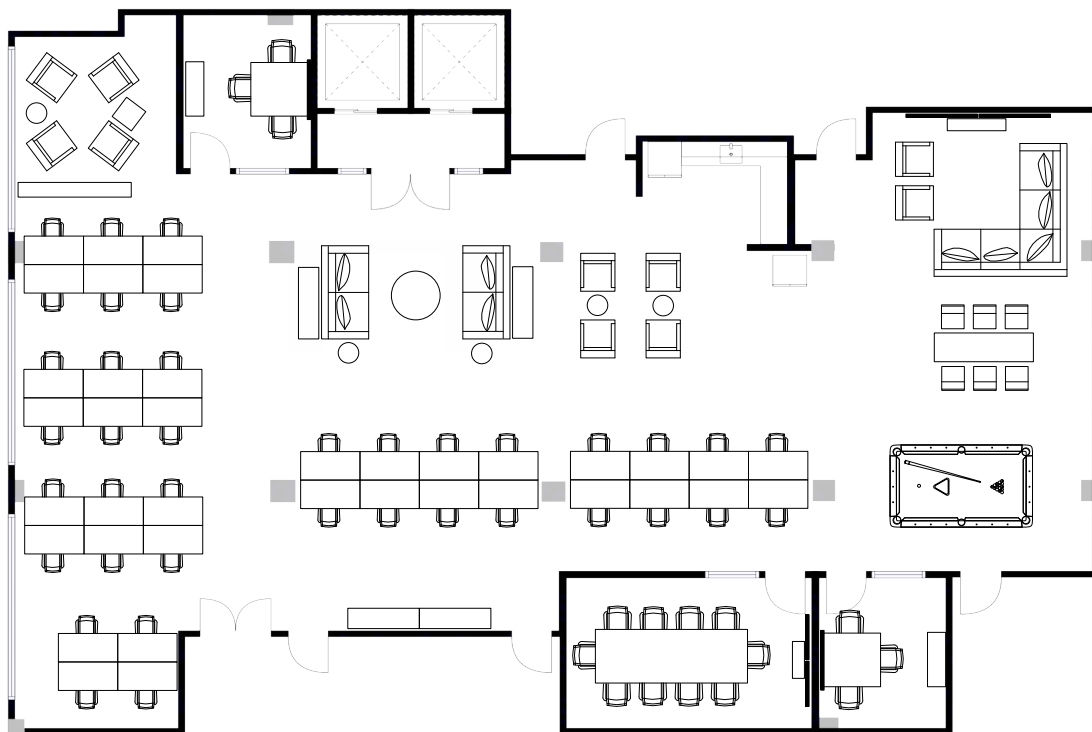
Immediate

## TERM

November 2026

## SPACE CONTAINS THE FOLLOWING:

- 30 sit/stand desks in place
- 8 stationary desks
- Capacity for 30 more positions
- 3 conference rooms
- Large community pantry area
- Multiple soft seating areas throughout
- Fully furnished/wired




Note: Floor plan is for illustrative purposes only and is not to scale

# 43

## WEST 24<sup>TH</sup> STREET FLATIRON

### Neighborhood Highlights

- Steps from Madison Square Park and retail attractions including renowned restaurants, hotels and shops
- Within a 5 minute walk to several subway lines including the **6 F M R W**  and several Citi Bike stations

