

210 ELIZABETH STREET



TIMELESS CHARM MEETS

MODERN EDGE

210 Elizabeth Street is the premier office building in the heart of New York City's vibrant Nolita neighborhood. All newly renovated with 38,000-RSF of office space featuring boutique floorplates, premium finishes, multiple outdoor spaces, and historic charm. 210 Elizabeth Street offers the perfect combination for an outstanding tenant experience.

PROPERTY HIGHLIGHTS

- Fully restored historic building completed in 2024. Originally constructed in 1880, Manual Glas Architects oversaw the renovation of 204-210 Elizabeth Street, including new, stunning glass-enclosed landings on each floor
- 4,000+ SF tenant-only rooftop deck, with sweeping skyline views, fully equipped kitchen, Lynx gas grills, ADA accessibility and restrooms
- Abundant natural light from multiple exposures in each suite, with select suites featuring original brick vaulted ceilings, and a Penthouse floor with a private terrace and roof deck
- All new, state-of-the-art infrastructure upgrades, including elevators, individual tenant-controlled HVAC systems, ADA compliance, and fire safety systems
- Luxury residential finishes, including hardwood floors, top of the line stainless steel appliances and integrated cabinetry, with private restrooms and pantries in each suite
- A few minutes walk to multiple subway lines including the 6, R/W, F/M/B/D, and J/Z trains, and 1-minute from the nearest Citi Bike station
- Convenient award winning and Michelin Star eateries in the building and immediate neighborhood



58,390 TOTAL SQUARE FEET



SIX-STORY COMPLEX



24/7 ATTENDED LOBBY
WITH FOB ACCESS



EXCLUSIVE, NEWLY
COMPLETED RENOVATION

TAILORED TO

YOUR BUSINESS

AVAILABILITY



ASKING RENT
UPON REQUEST



POSSESSION
IMMEDIATE



TERM
5+ YEARS



4TH FLOOR

NORTH

7,111 RSF

3RD FLOOR

NORTH

7,111 RSF

2ND FLOOR

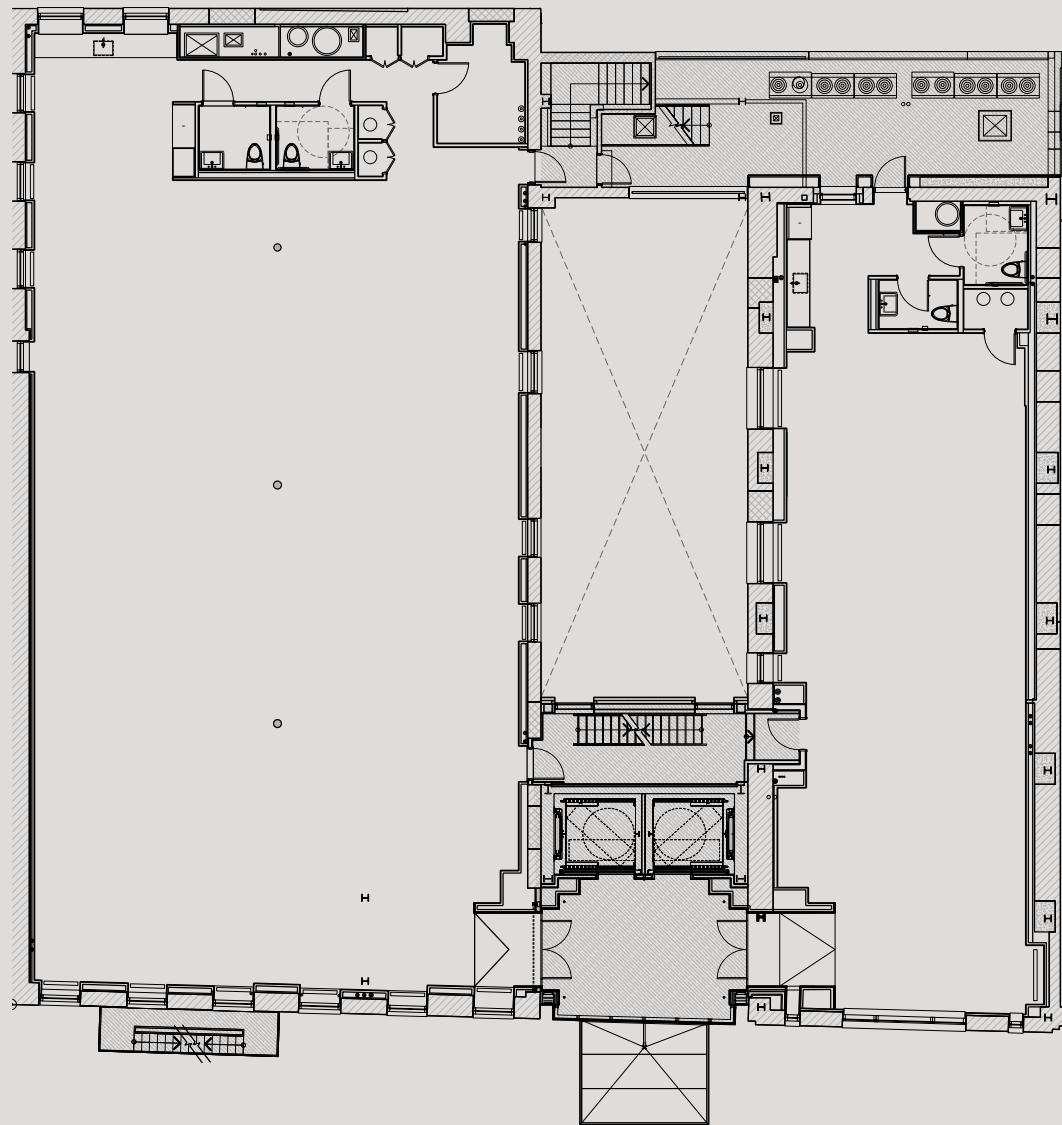
NORTH

7,111 RSF



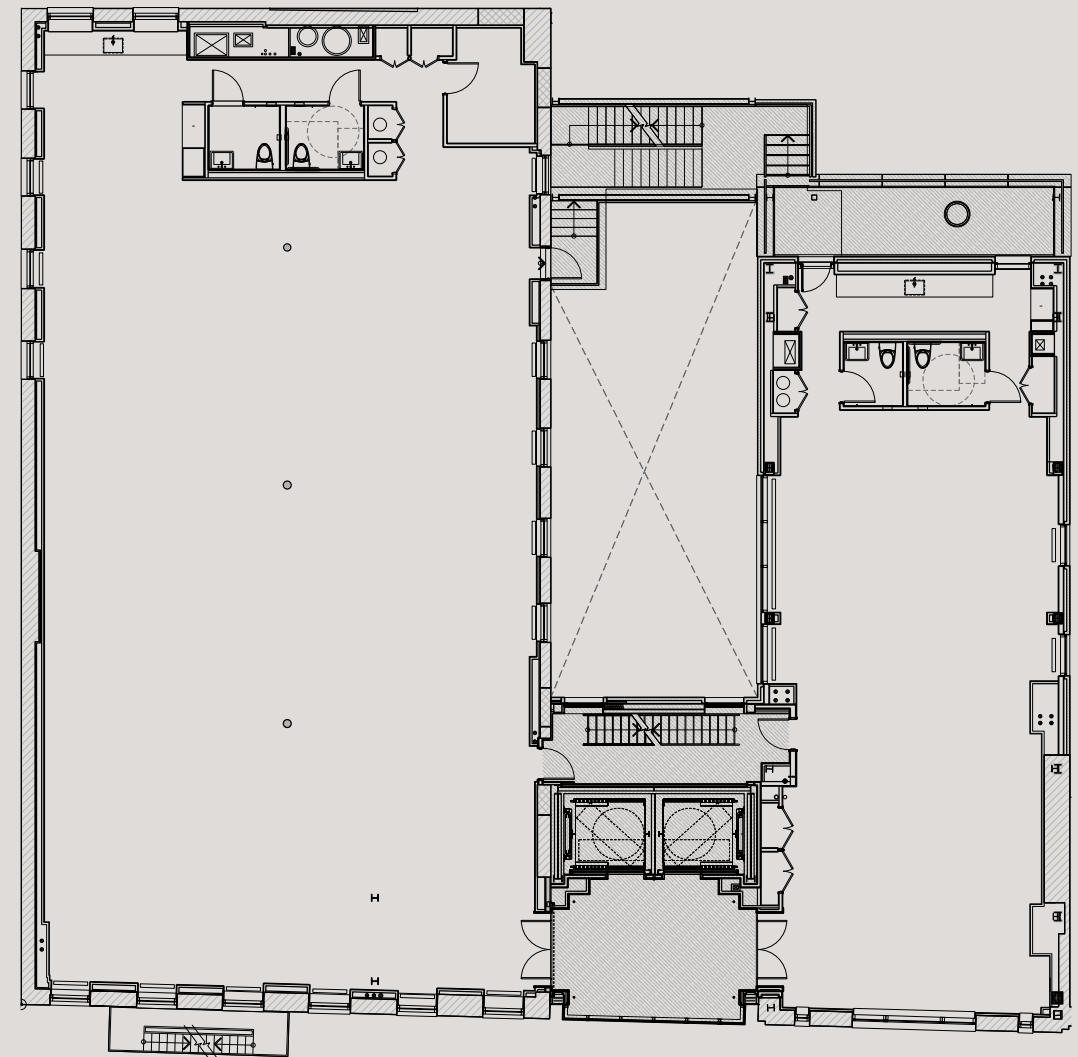
CORE & SHELL PLAN

SECOND FLOOR



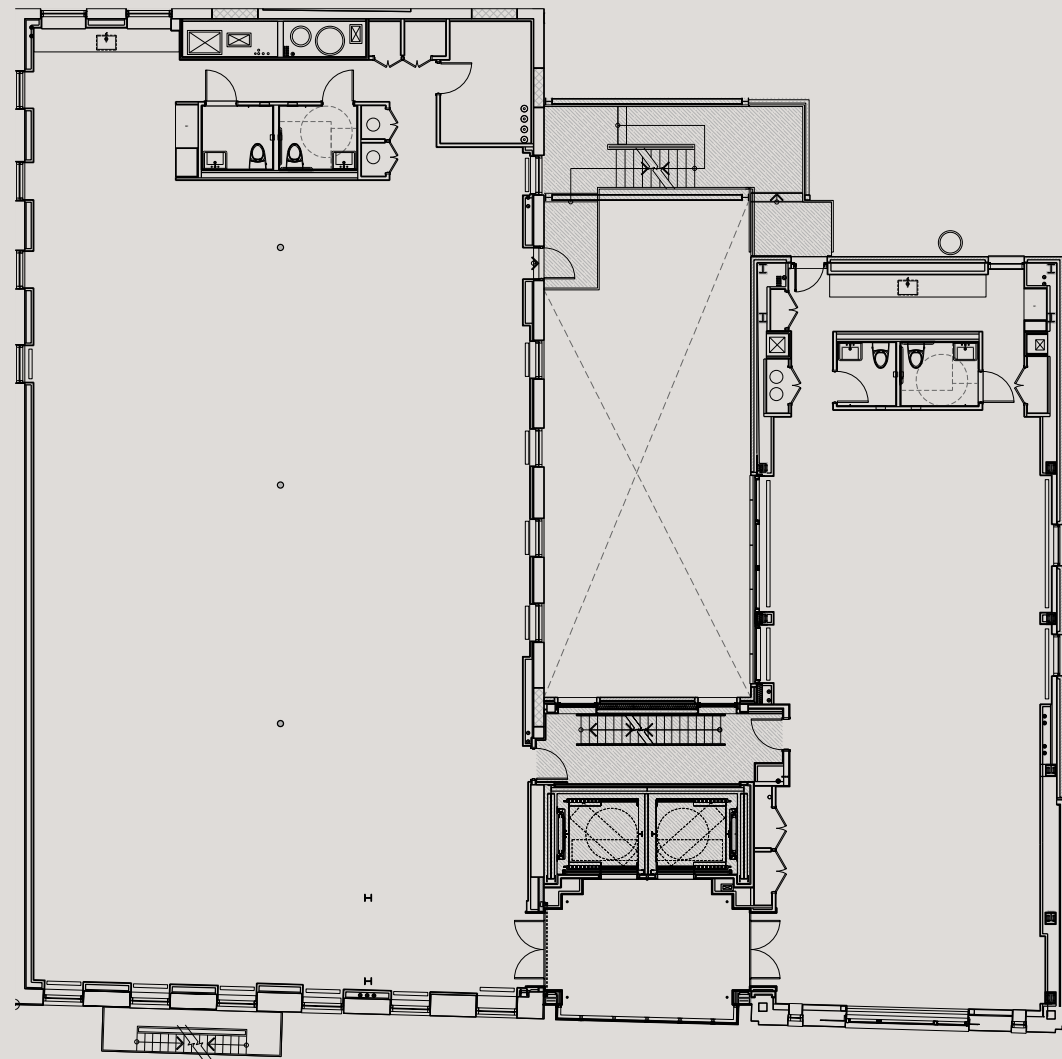
CORE & SHELL PLAN

THIRD FLOOR



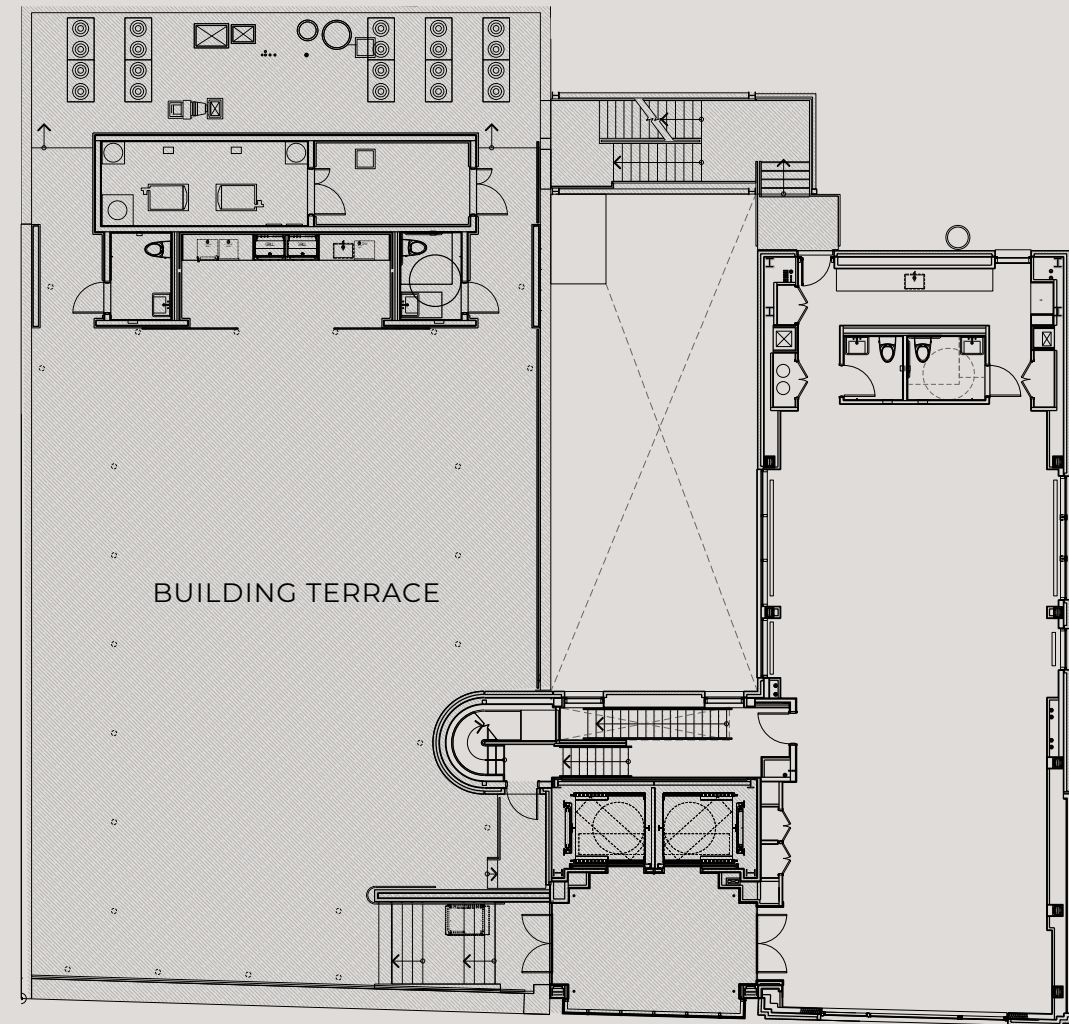
CORE & SHELL PLAN

FOURTH FLOOR



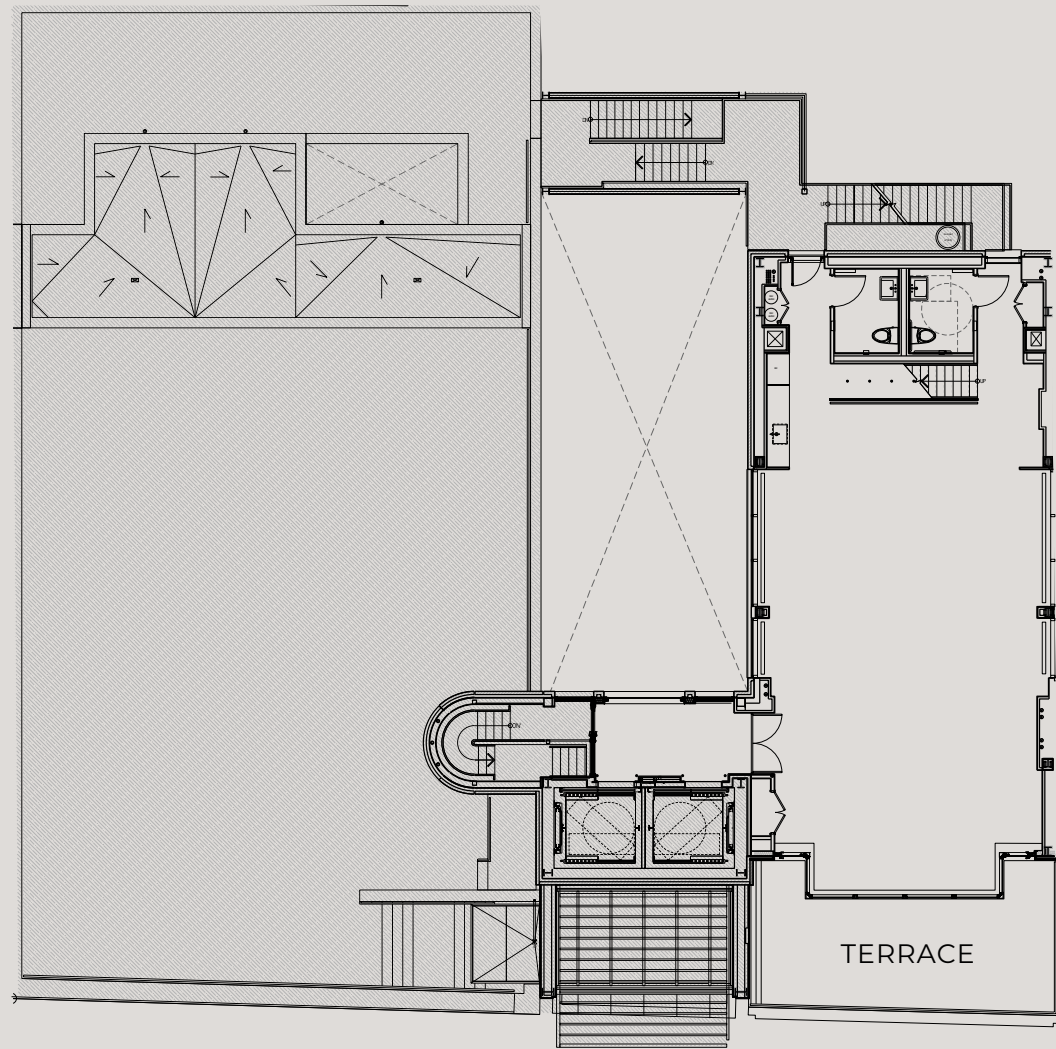
CORE & SHELL PLAN

FIFTH FLOOR



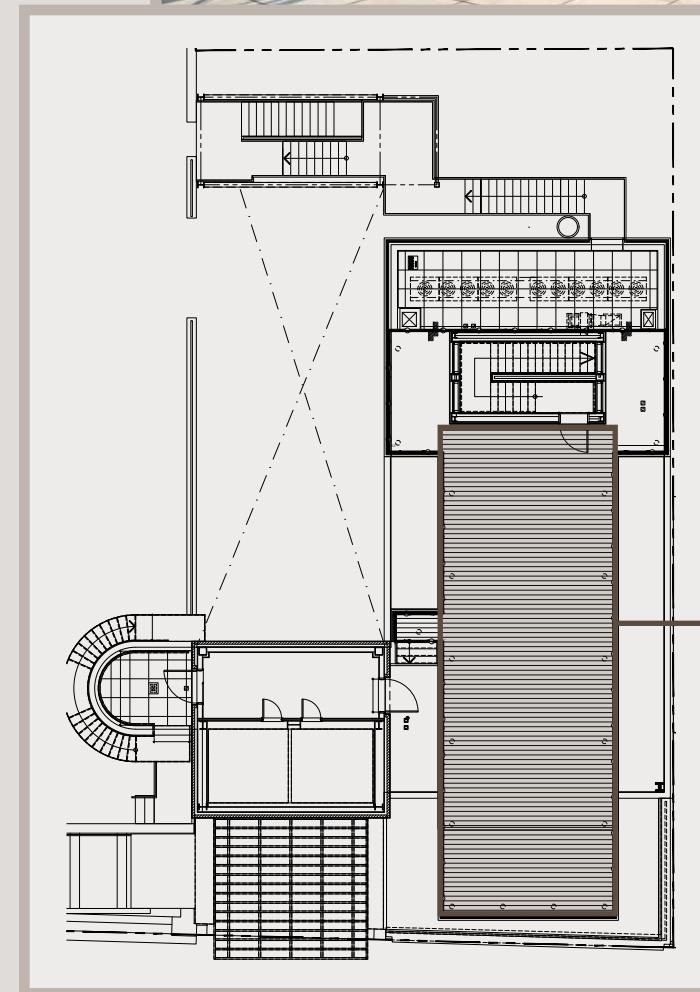
CORE & SHELL PLAN

SIXTH FLOOR



PRIVATE SIXTH FLOOR

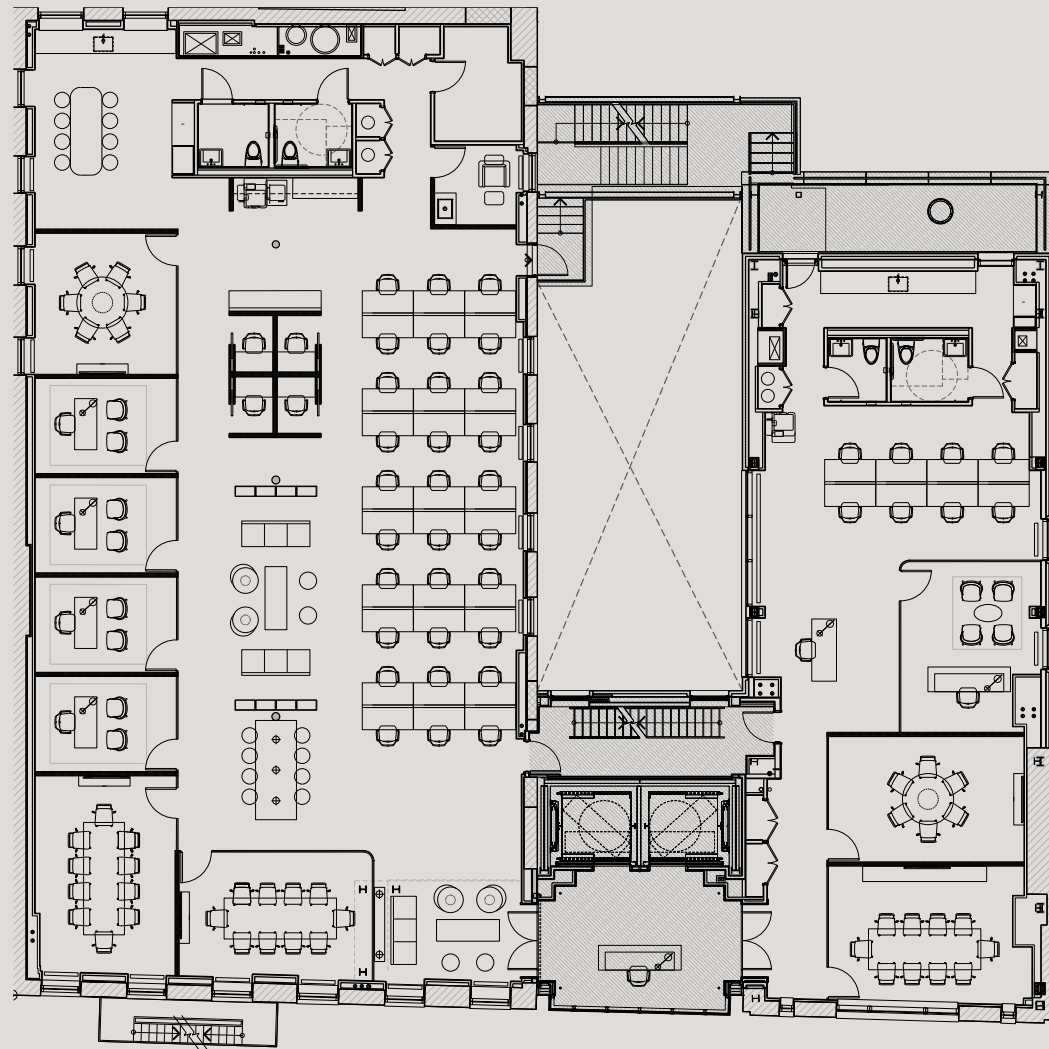
ROOFTOP



PRIVATE SIXTH FLOOR ROOFDECK

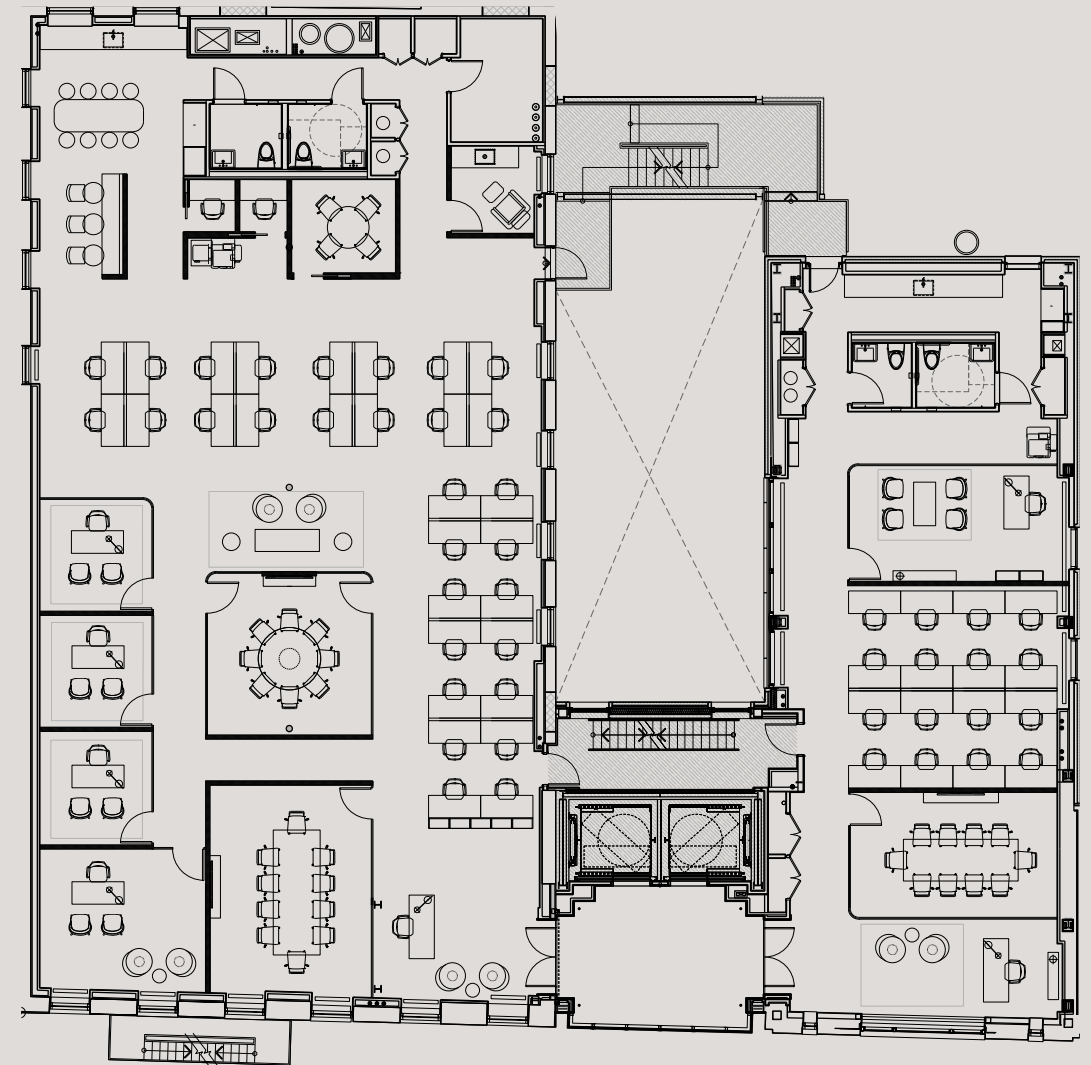
SINGLE TENANT

TEST FIT EXAMPLE



MULTI-TENANT

TEST FIT EXAMPLE



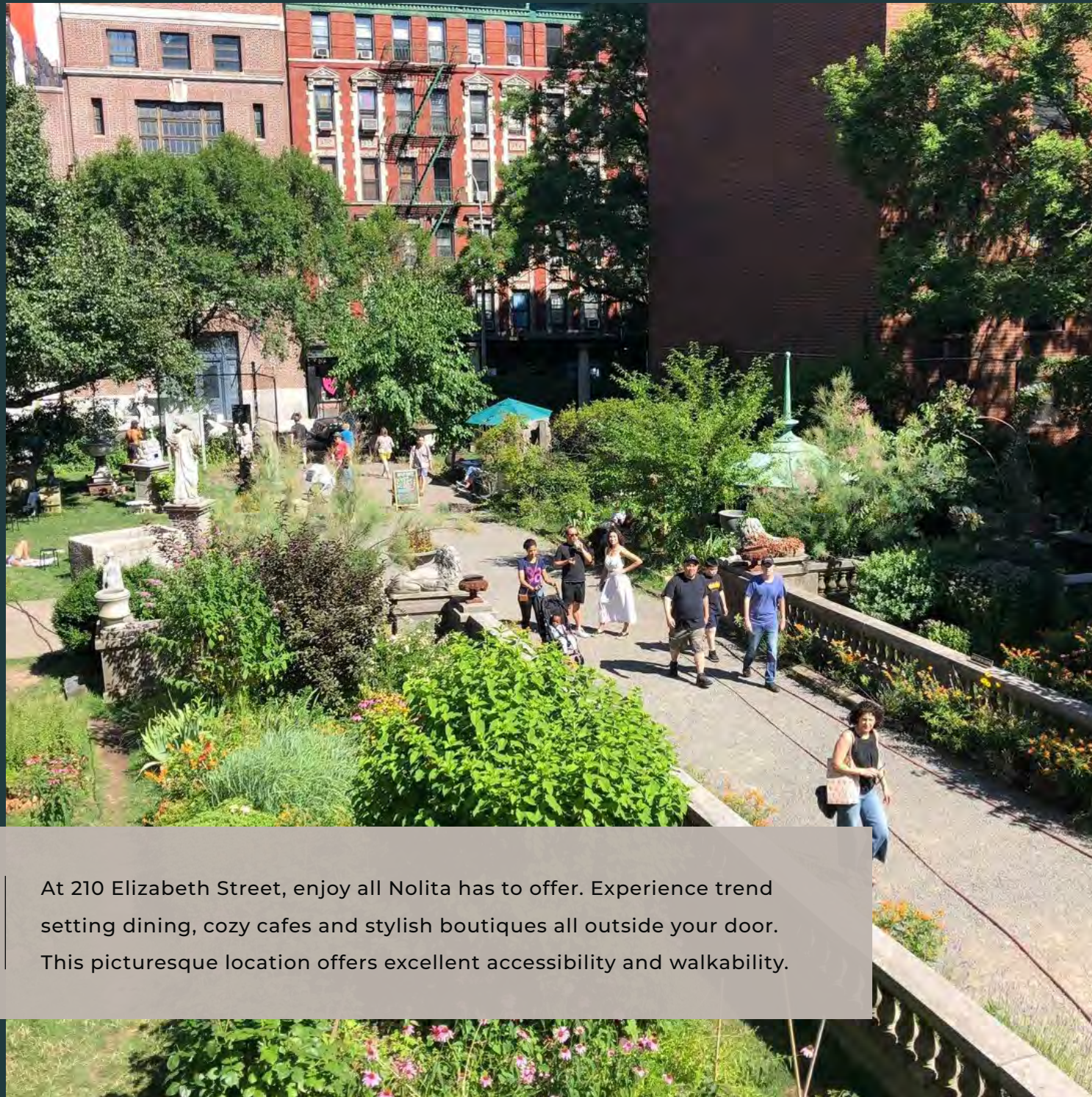
VISUALIZE YOUR
FUTURE
SPACE



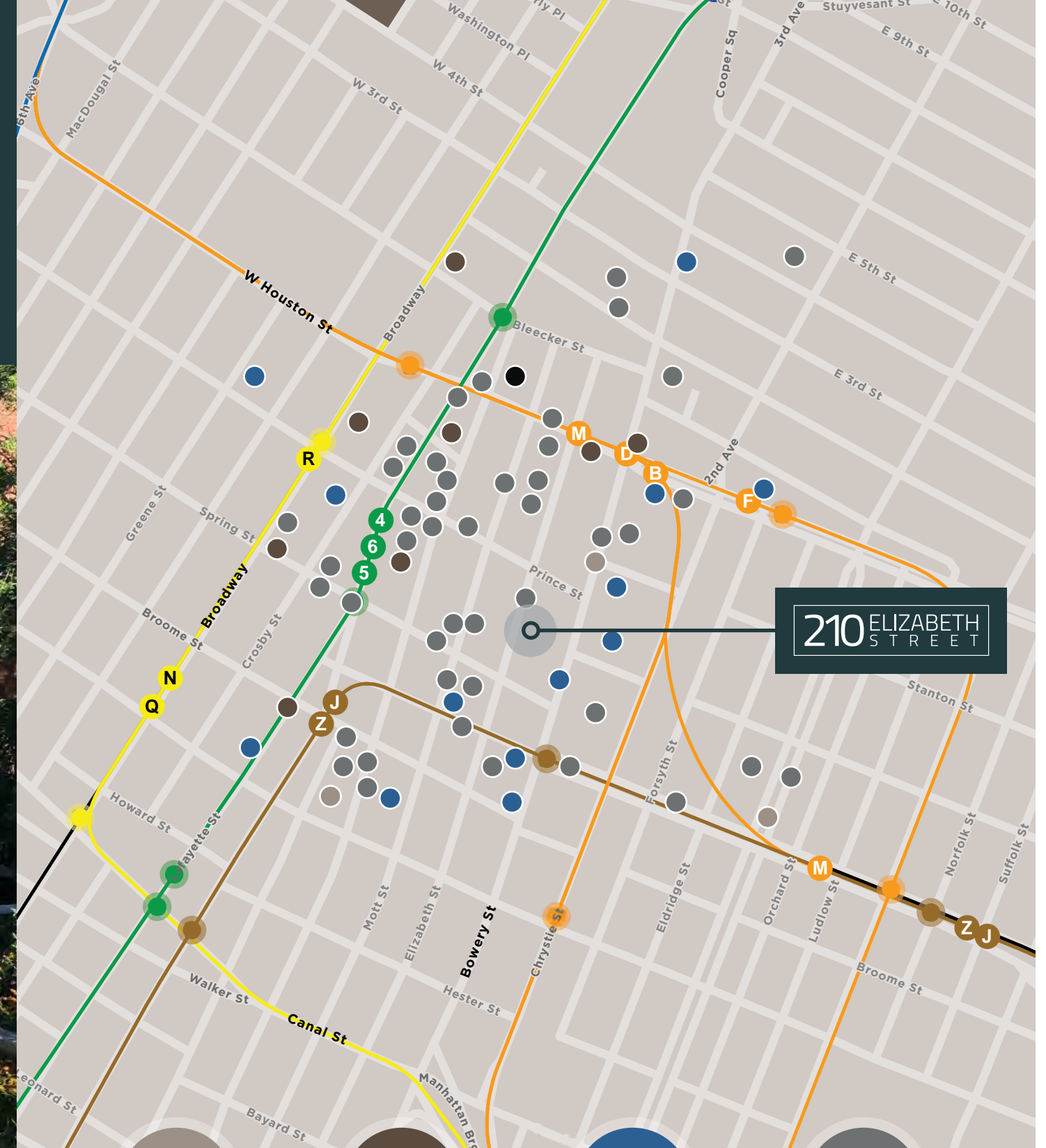


HEARTBEAT

OF MANHATTAN



At 210 Elizabeth Street, enjoy all Nolita has to offer. Experience trend setting dining, cozy cafes and stylish boutiques all outside your door. This picturesque location offers excellent accessibility and walkability.



210 ELIZABETH STREET



03
MUSEUMS



08
GYMS



13
HOTELS



45
RESTAURANTS