

29 | W-38TH STREET

Newly Renovated Full Floor

Move-In Ready

High-End Glass-Front Finishes

Located in the Transit Triangle

Steps to Bryant Park

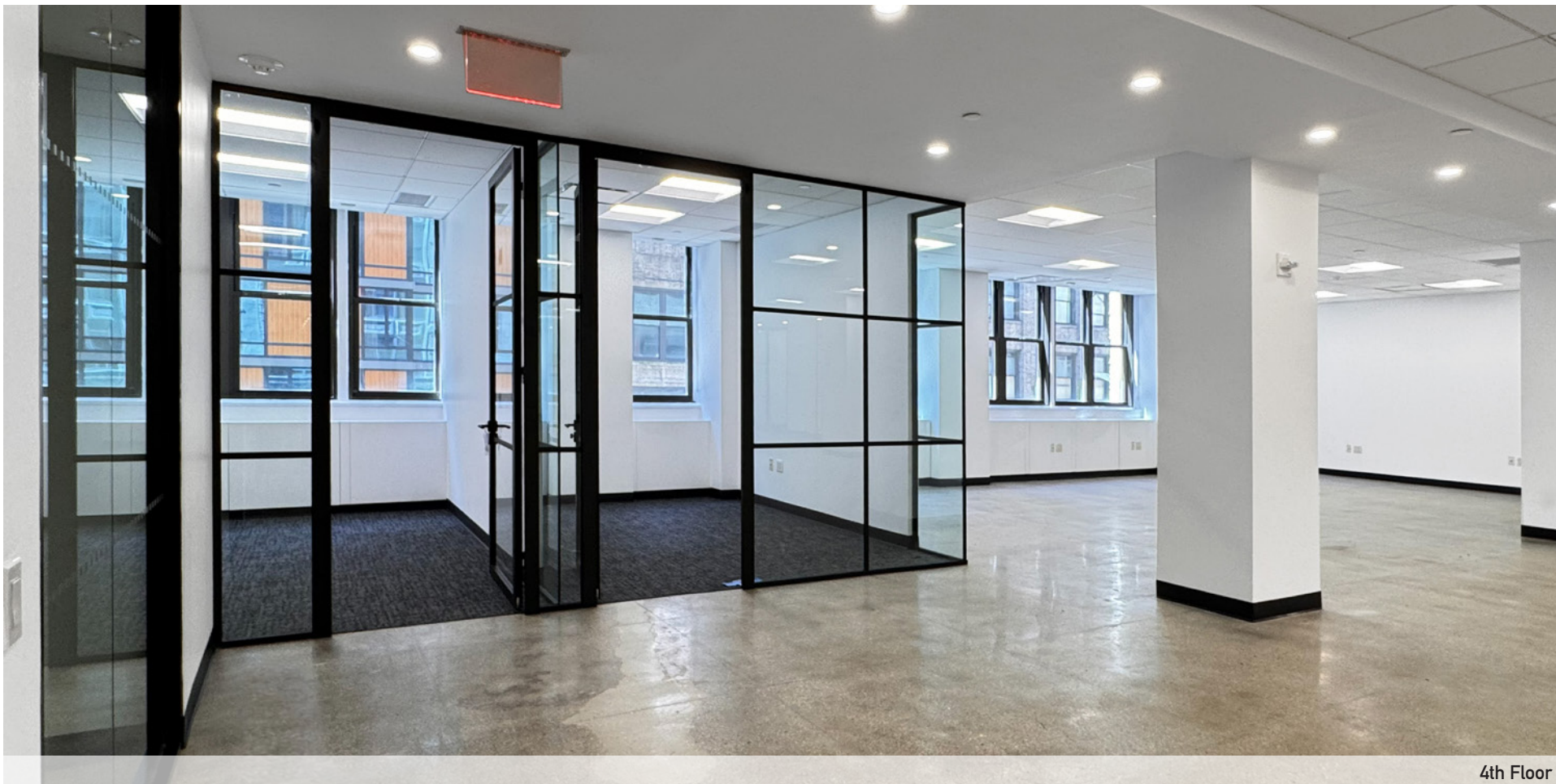


Rendering



Attended Lobby, 24/7/365 Access





4th Floor

- Entire 4th Fl 7,150 rsf
- Newly renovated, move-in ready space featuring new high-end glass-front finishes
 - Conference room, (6) offices, large open area allowing layout flexibility
 - Full kitchen with seating space, private men's and women's restrooms
 - Carpeted private workspaces and polished concrete floor in open area
 - 3-Sides of oversized operable windows provide good natural light

Possession: Immediate

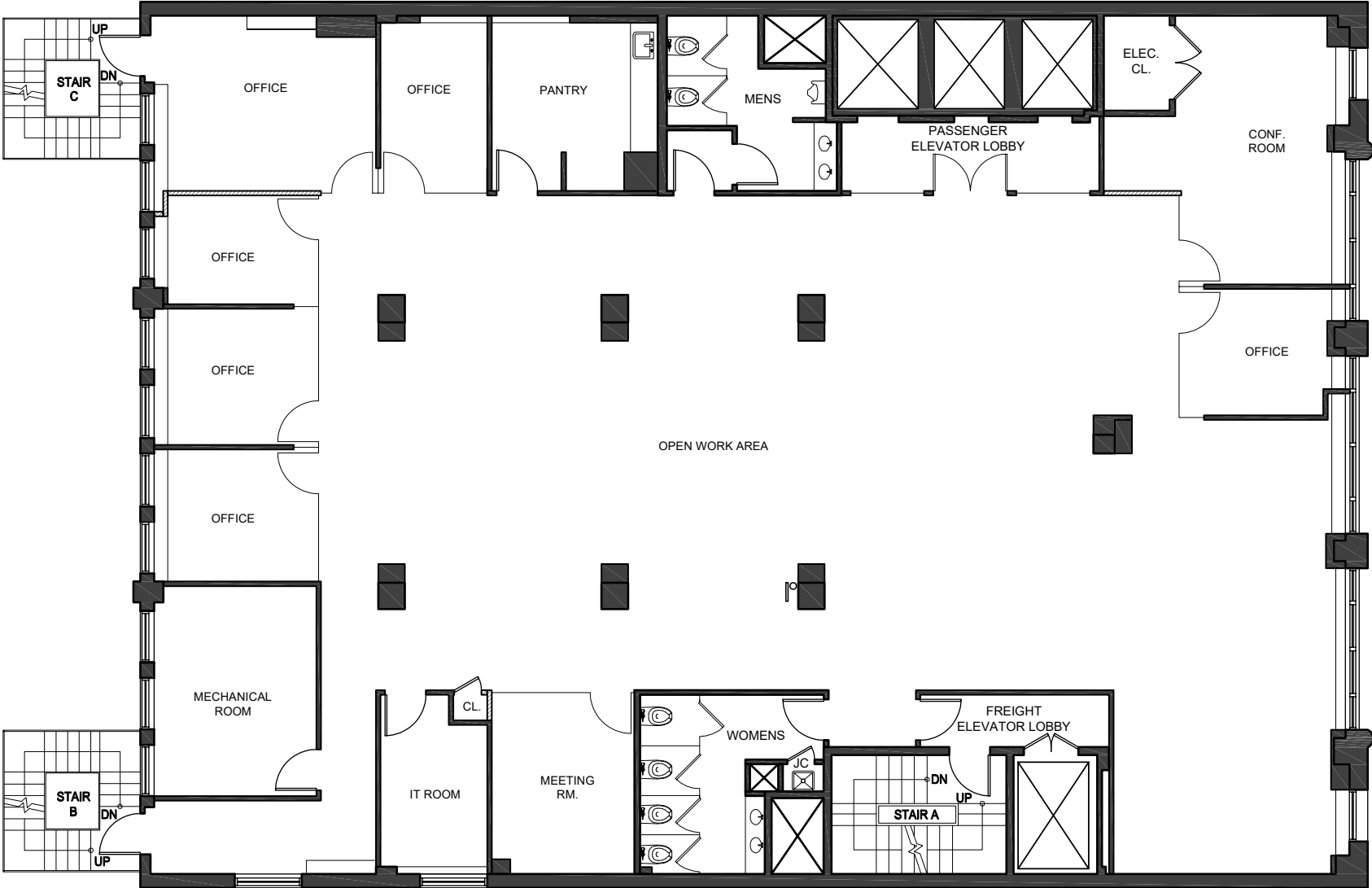
Rent: Call or email for details

Comments Attended lobby, 24/7/365 keycard security access

Walk to Bryant Park, Times Square,
Herald Square, Madison Square Garden,
and Transportation Hubs at Penn Station/
Moynihan Train Hall and Grand Central
Terminal, Access Subways 4 5 6 7

B D F M N Q R W S

ENTIRE 4TH FLOOR - 7,150 RSF



WEST 38TH STREET









Walk, Bike, Drive, Ride + Live Work & Play

Centrally located in the Transportation Triangle, the surrounding upscale dining and hospitality options are perfect for entertaining clients.

29 West 38th, adjacent to Amazon's new headquarters, is the obvious choice for a convenient location where employees love to be.

