

SUBLEASE · PLAZA
DISTRICT

545 Madison Avenue

Entire 12th Floor · 7,414 RSF

Madison Avenue at East 55th Street · New York, NY 10022

7,414 RSF

FULL FLOOR

Sept 1 '26

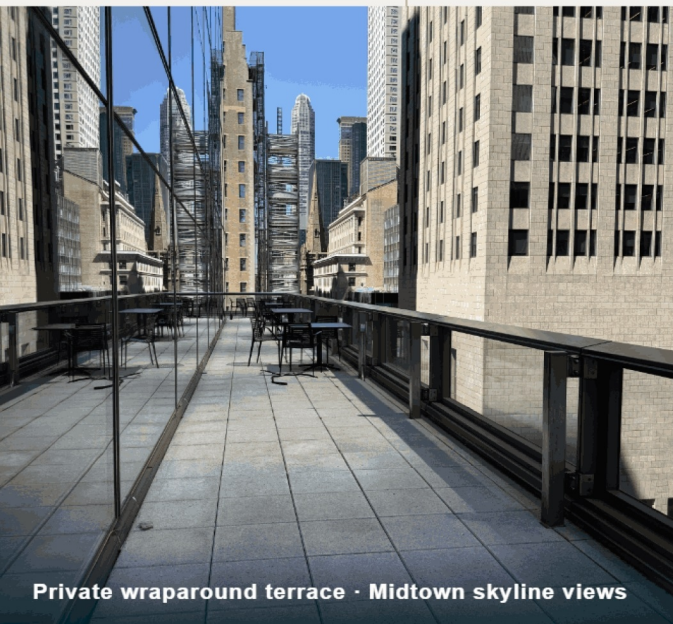
AVAILABLE

Oct 2029

TERM THROUGH

Furnished

CONDITION



Private wraparound terrace · Midtown skyline views



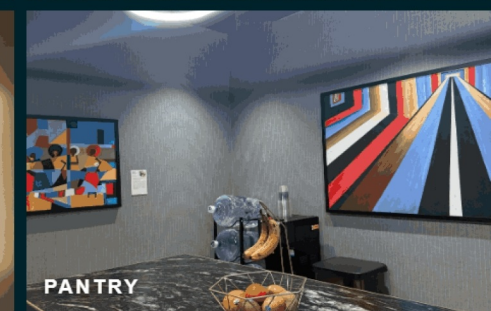
OPEN PLAN



BOARDROOM



CORRIDOR



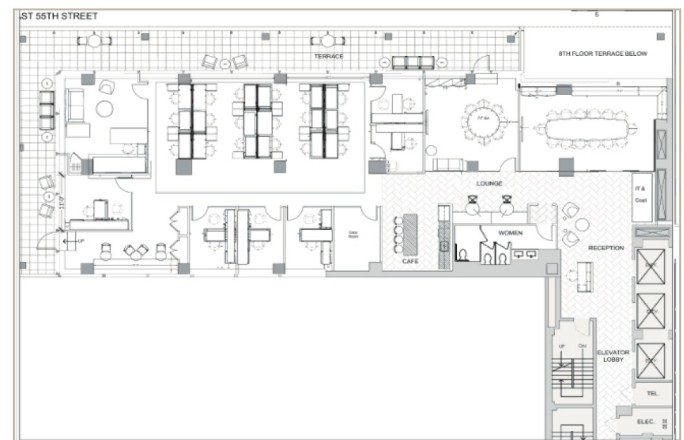
PANTRY

THE OPPORTUNITY

- **Brand-new, fully furnished installation** — turnkey and move-in ready.
- **Full-floor identity** with private branding and dedicated elevator presence.
- **Large wraparound terrace** — a rare private outdoor amenity in Midtown.

545 Madison Avenue is a 17-story, 140,000 SF boutique tower on the corner of East 55th Street and Madison Avenue, in the heart of Midtown's Plaza District.

FLOOR PLAN — ENTIRE 12TH FLOOR



7,414 RSF · NOT TO SCALE