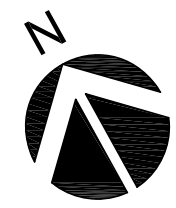
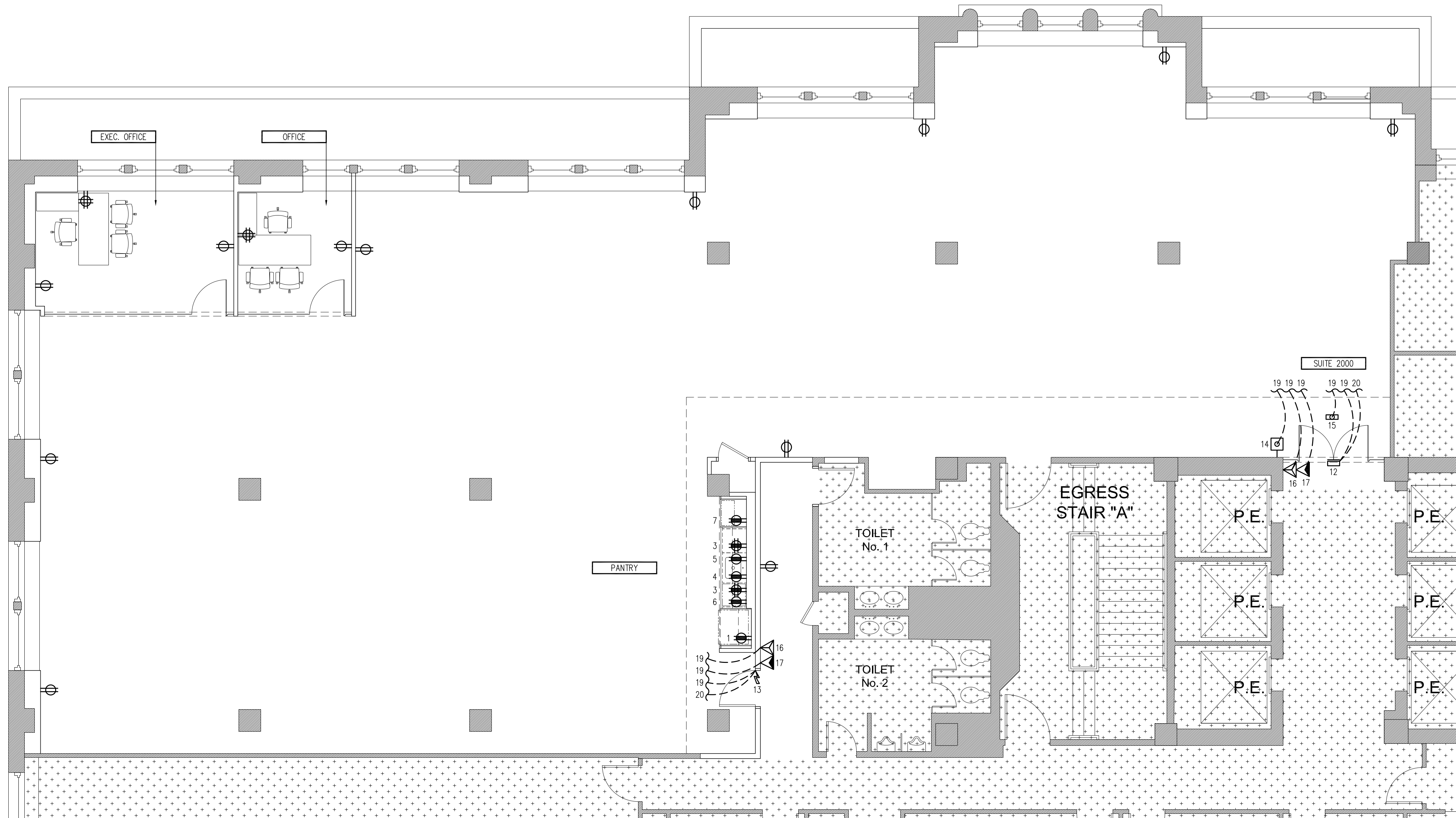


20th FLOOR POWER PLAN

SCALE: 3/16" = 1'-0" (@ 24" X 36" PAPER)



WEST 38th STREET



POWER LEGEND

- DUPLEX RECEPTACLE
- DEDICATED CIRCUIT DUPLEX RECEPTACLE
- QUADRUPLEX RECEPTACLE
- DEDICATED CIRCUIT QUADRUPLEX RECEPTACLE
- DEDICATED CIRCUIT SINGLE RECEPTACLE NEMA TYPE AS NOTED
- 1 @ CAT6 (CAT6A WHERE NOTED)
- 2 @ CAT6 (CAT6A WHERE NOTED)
- QUANTITY AS NOTED @ CAT6 (CAT6A WHERE NOTED)
- SURFACE FLOOR/CEILING MOUNT J-BOX
- SURFACE WALL MOUNT J-BOX
- FLEXIBLE POWER WHIP (CIRCUITS AS NOTED)
- FLEXIBLE CAT6 WHIP (QUANTITY AS NOTED)
- PATCH PANEL - CAT6(A)
- FIBER OPTIC JUNCTION PORT
- WIRELESS ACCESS POINT (W.A.P.)
- INTERCOM/DOOR BELL
- KEY PAD OR CARD READER
- MAG LOCK EXIT BUTTON RELEASE
- ELECTRIC STRIKE
- MAGNETIC LOCK
- SECURITY CAMERA
- "HOME-RUN" TO (DESIGNATED LOCATION)

POWER SPECIFICATIONS

- 1 - REF. @ 16" AFF. - DED. @ 120V/20A - NEMA 5
- 2 - CONVENIENCE DUPLEX @ 42" AFF. - DED. GFI. @ 120V/20A - NEMA 5
- 3 - CONVENIENCE QUAD. @ 42" AFF. - DED. GFI. @ 120V/20A - NEMA 5
- 4 - TANK-LESS HOT WATER @ 16" AFF. - DED. @ 120V/20A - NEMA 5
- 5 - EJECTOR PUMP @ 16" AFF. - DED. @ 120V/20A - NEMA 5
- 6 - DISHWASHER @ 3" AFF. - DED. @ 120V/20A - NEMA 5
- 7 - MICROWAVE @ 54" AFF. - DED. @ 120V/20A - NEMA 5
- 8 - COPY/PRINT @ 16" AFF. - DED. @ 208V/20A - NEMA 6
- 9 - QUAD. @ 36" AFF. - DED. @ 120V/20A - 2 @ NEMA 5
- 10 - TWIST LOCK @ 36" AFF. - DED. @ 208V/30A - NEMA L6
- 11 - CAT6 PATCH PANEL @ 48" AFF. - (No. OF PORTS AS REQ.)
- 12 - OVERHEAD MAGNETIC LOCK
- 13 - ELECTRIC STRIKE
- 14 - BUTTON DOOR RELEASE - TOP @ 48" AFF. MAX.
- 15 - MOTION SENSOR DOOR RELEASE
- 16 - INTERCOM/DOOR BELL - TOP @ 48" AFF. MAX.
- 17 - CARD READER OR KEY PAD DOOR RELEASE - TOP @ 48" AFF. MAX.
- 18 - THERMOSTAT @ 60" AFF.
- 19 - LOW VOLTAGE HOME-RUN TO CAT6 PATCH PANEL
- 20 - LOW VOLTAGE HOME-RUN TO FIRE ALARM SYSTEM

THESE DRAWINGS INDICATE THE GENERAL SCOPE OF THE PROJECT IN TERMS OF ARCHITECTURAL DESIGN CONCEPT, THE DIMENSIONS OF THE BUILDING, THE MAJOR ARCHITECTURAL ELEMENTS AND THE TYPE OF STRUCTURAL, MECHANICAL, AND ELECTRICAL SYSTEMS. AS SCOPE DOCUMENTS THE DRAWINGS DO NOT NECESSARILY INDICATE OR DESCRIBE ALL THE WORK REQUIRED FOR FULL PERFORMANCE AND COMPLETION REQUIREMENTS OF THE CONTRACT DOCUMENTS. ON THE BASIS OF THE GENERAL SCOPE INDICATED OR DESCRIBED, THE CONTRACTOR SHALL FURNISH ALL ITEMS REQUIRED FOR THE PROPER EXECUTION AND COMPLETION OF THE WORK.

NOTES:
 - ALL WALL RECEPTACLES/J-BOXES @ 16" AFF. TO \bar{C} UNLESS OTHERWISE NOTED
 - ALL DIMENSIONS TO \bar{C} OF BOX VERTICAL & HORIZONTAL UNLESS OTHERWISE NOTED

ABBREVIATIONS

- ETR. - EXISTING TO REMAIN
- RELO. - RELOCATE EXISTING
- DEMO. - REMOVE & CART
- P.T. - (POWER) PANEL TIMER
- N.L. - NIGHT LIGHT

NOTE: HATCH AREA - "NOT IN CONTRACT"

12/3/25	CLIENT REVISIONS
12/2/25	CLIENT REVISIONS

Date	No.	Revision

Title: 20th FLOOR: PRE-BUILT POWER PLAN		
Scale:	AS NOTED	Job No.:
Date:	11/24/25	
Drawn By:	A.S. & N.T.	02611
Checked By:	N.T.	
Seal & Signature:	BSCAN:	

Drawing: A-102.00 Set: