

550
SEVENTH AVE

MOVE IN READY TOWER FLOOR

EXCELLENT NATURAL LIGHT & CITY VIEWS



PREMISES

550 7TH AVE

RENT

INQUIRE

SPACE

22ND FLOOR

POSSESSION

ARRANGED

SIZE

8,216 SF

TERM

NEGOTIABLE

SPACE DETAILS

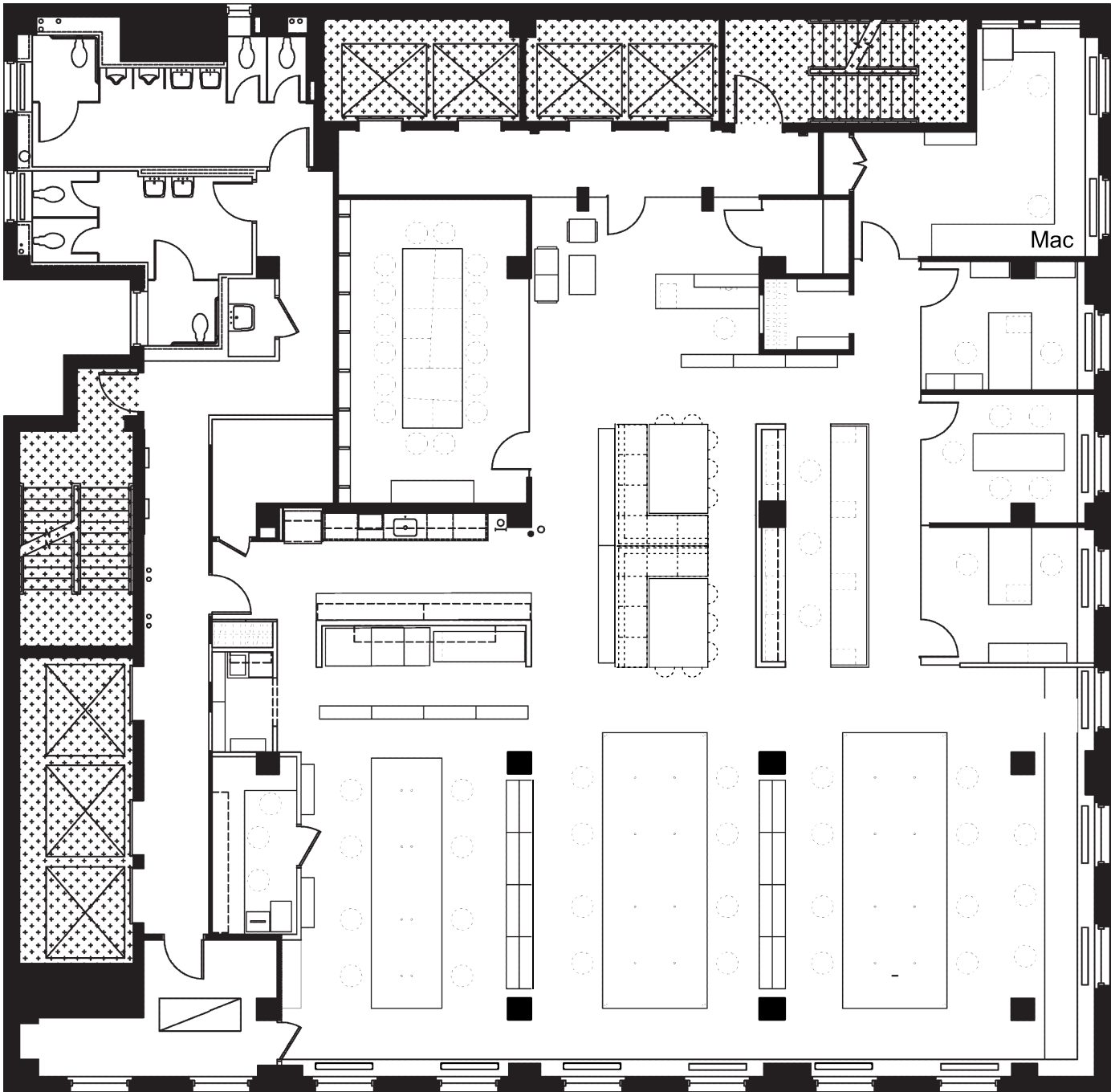
- TOWER FLOOR WITH EXCELLENT NATURAL LIGHT AND VIEWS
- GLASS-FRONTED MEETING & CONFERENCE ROOMS
- HIGH EXPOSED CEILINGS
- PRIVATE RESTROOMS & WET PANTRY KITCHEN
- LANDLORD OPEN TO MODIFICATIONS
- 24/7 ACCESS W/ ATTENDED LOBBY







FLOOR PLAN & TEST FIT



0 5 10 15 FEET

W E S T 3 9 t h S T R E E T

S E V E N T H A V E N U E



THE BUILDING

- CORNER OF W 39TH ST & 7TH AVE
- 24/7 ACCESS WITH ATTENDED LOBBY
- 4 PASSENGER & 3 FREIGHT ELEVATORS

NEARBY

- PENN STATION / MOYNIHAN HALL
- GRAND CENTRAL TERMINAL
- PORT AUTHORITY BUS TERMINAL
- BRYANT PARK

1 2 3 N Q R W S A C E B D F M 7