

An aerial photograph of a city street grid, likely New York City, viewed from above. The image is overlaid with a semi-transparent blue filter. The streets are arranged in a regular grid pattern, with buildings and trees visible between the streets. The overall tone is monochromatic blue.

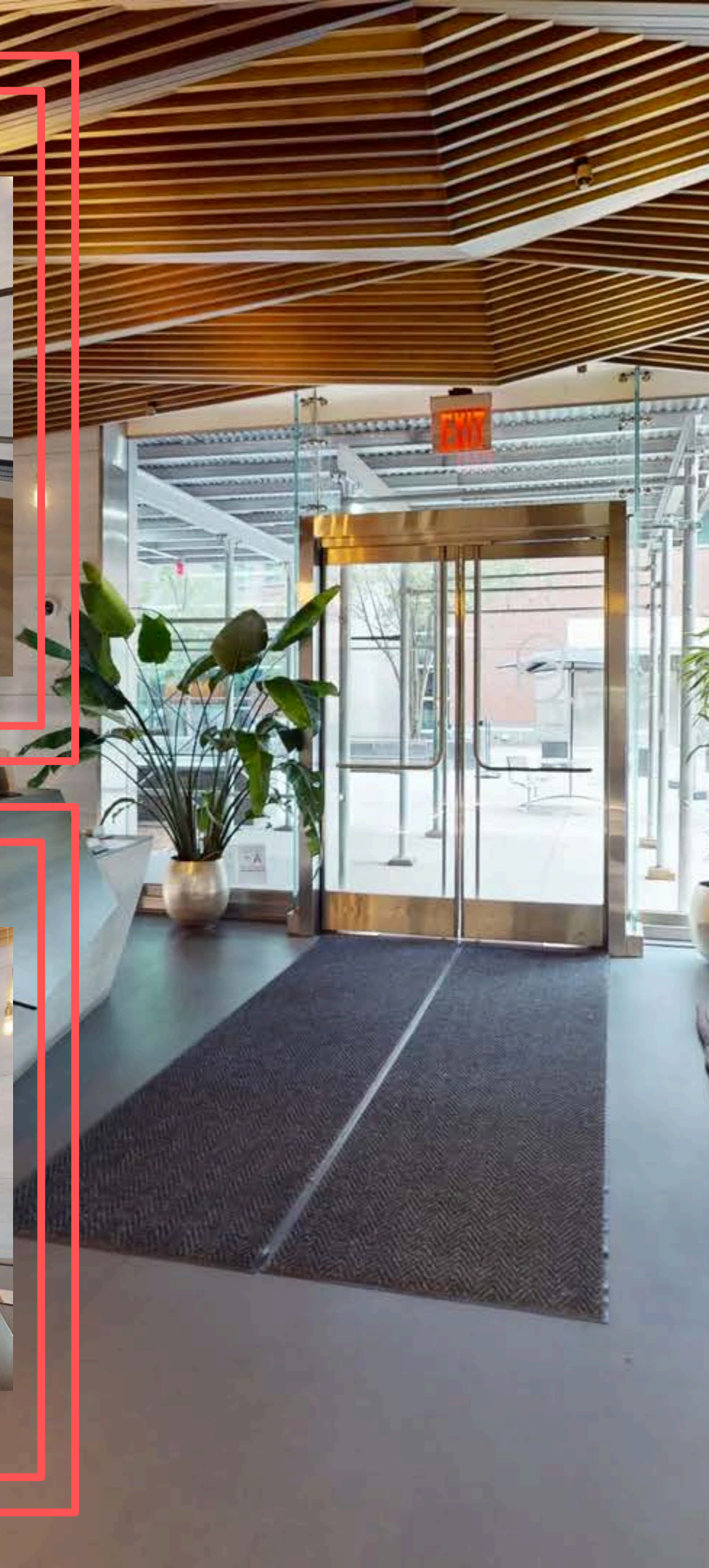
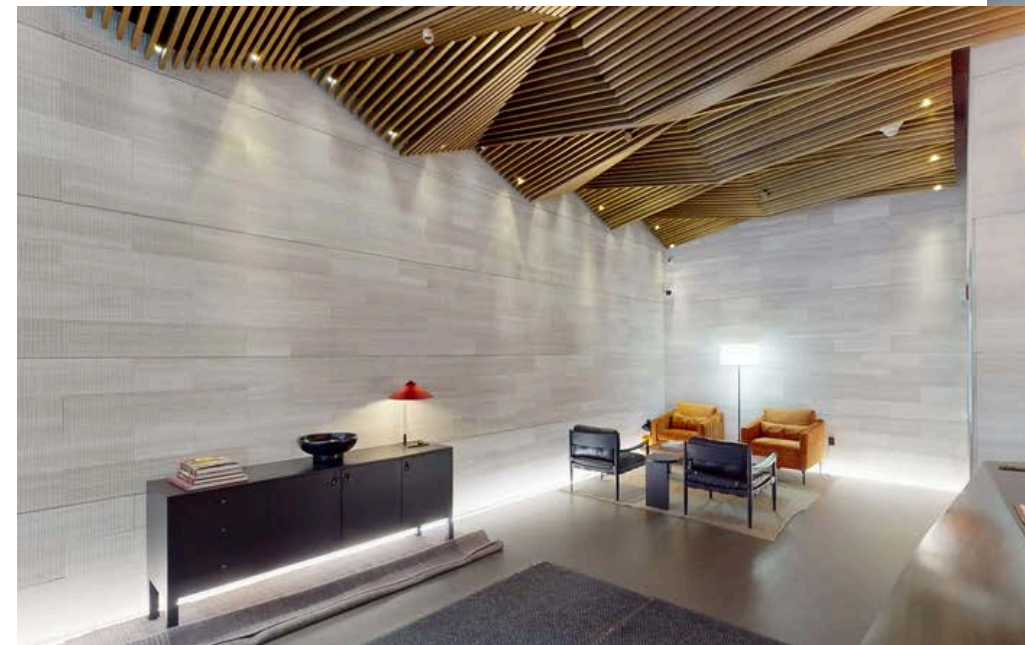
137 E 25TH

A boutique 11-story
gem just steps from
Madison Square Park.

lobby renovation

Ownership has recently completed a comprehensive renovation of the lobby at 137 East 25th Street, introducing natural elements and welcoming features like a full-time doorman to enhance the arrival experience. More than just a visual upgrade, the transformation reflects a broader commitment to quality and tenant satisfaction. With ongoing investments in the property, ownership continues to raise the bar for the daily experience of tenants, visitors, and investors alike.

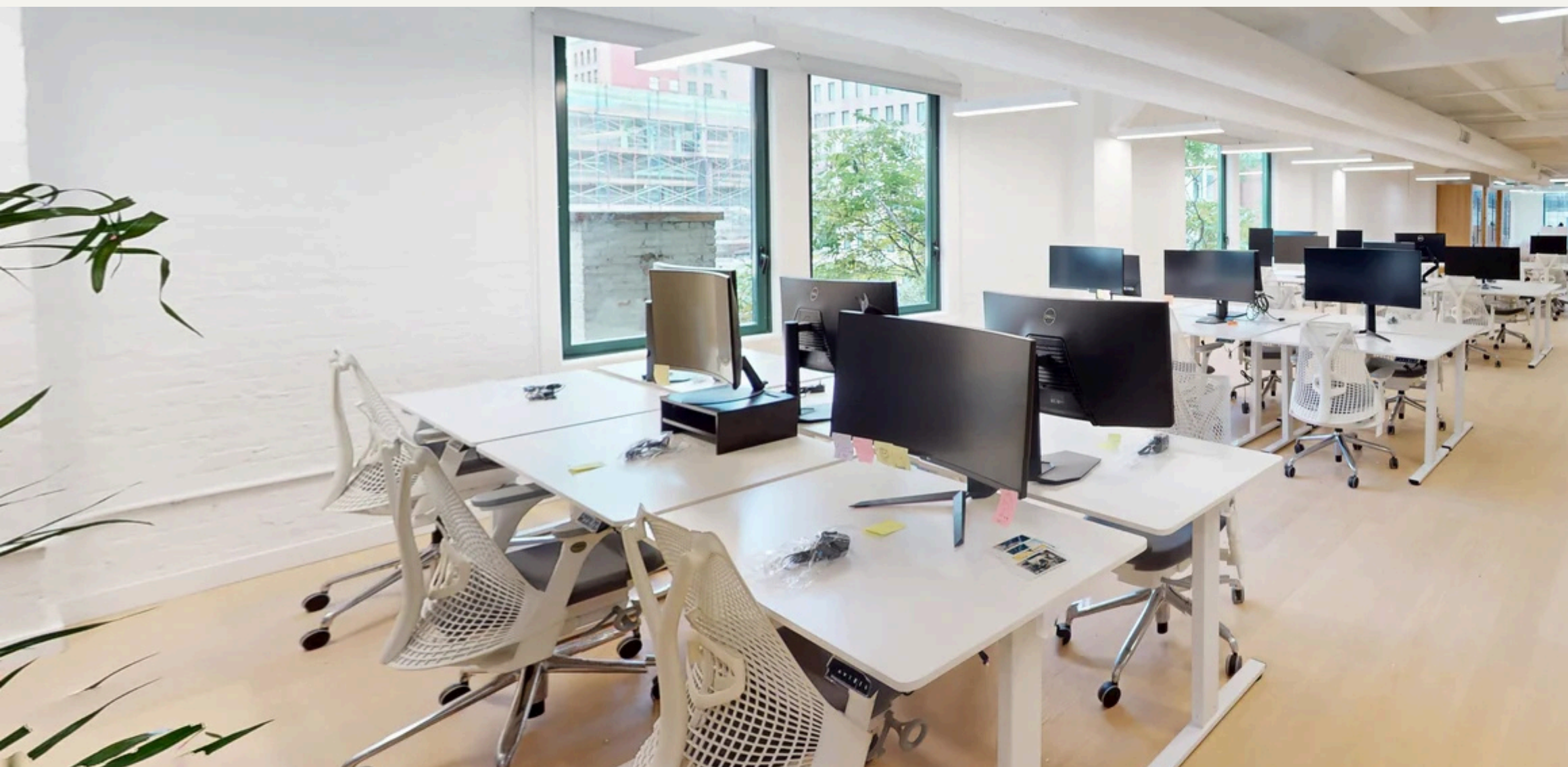
(02)



(03)

building modernization

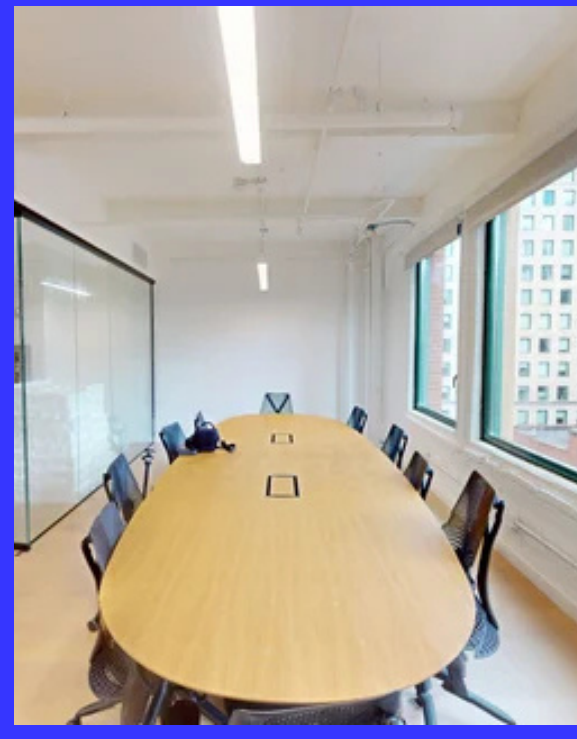
This boutique property is in the midst of a thoughtful renovation. Ownership has introduced a carefully designed upgrade that includes advanced access control technology, improving both lobby entry and elevator security.



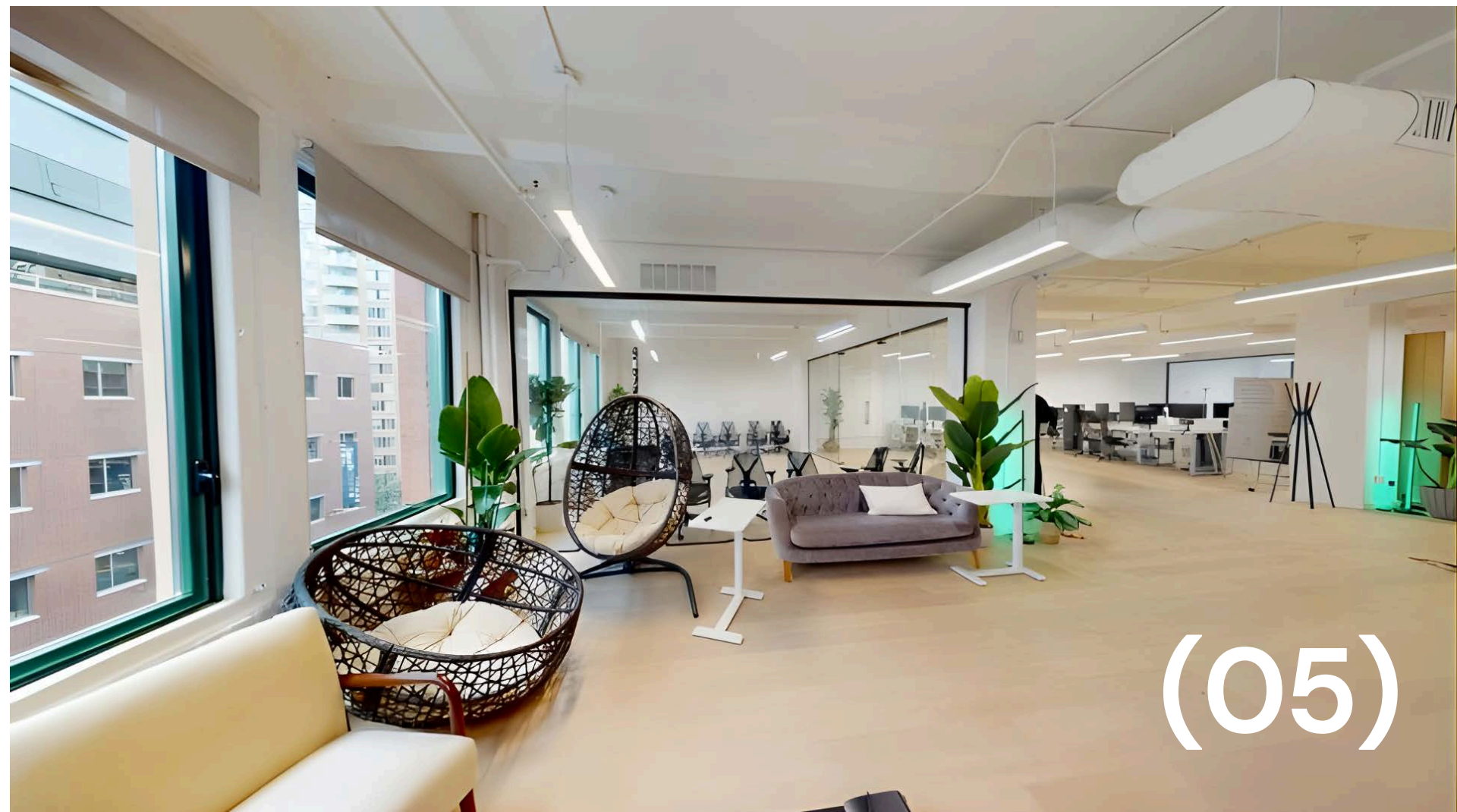
commitment to excellence

CONSTRUCTION & DESIGN
EXPERTS AT YOUR SERVICE

(04)



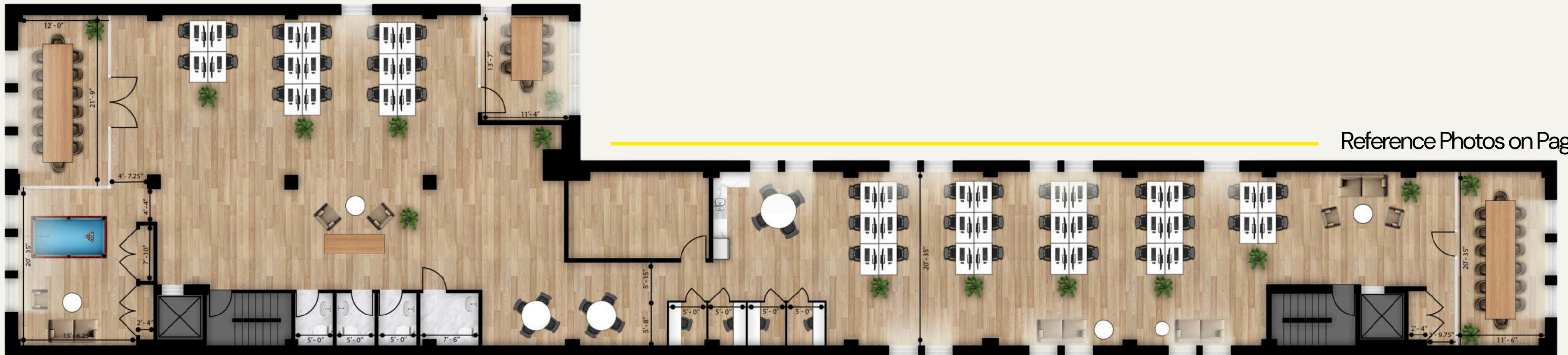
With Republic Investment's hands-on ownership and Nomad Group's in-house construction expertise and on-site cleaning management, we offer a seamless, turnkey solution for creating your ideal workspace. Each ~8,000-square-foot floorplate is built to a high-standard and designed with the flexibility to adapt to your unique operational needs. From concept to completion, our team works closely with you to shape a space that reflects your brand, supports your culture, and enhances functionality. The result is a fully customized, future-ready office, designed entirely around you.



(06)

floorplan #1

8,308 SF



Reference Photos on Page 5

floorplan #2

8,308 SF

