

510

Fifth Avenue

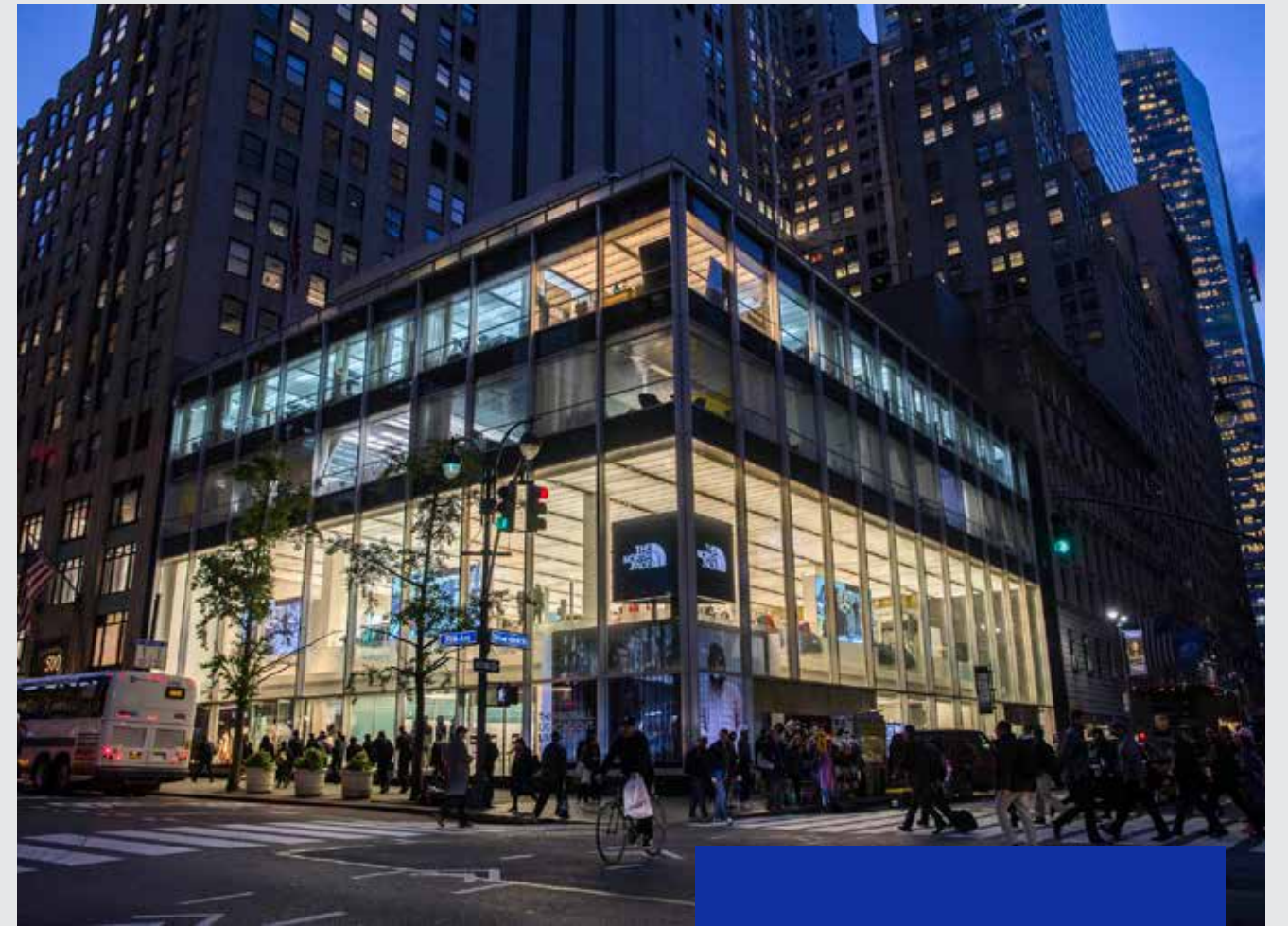
40,634 RSF

Entire office portion available



Timeless Design. Modern Vision.

Designed by Gordon Bunshaft of Skidmore, Owings & Merrill, visionary behind Lever House and the Grace Building, this building is celebrated as one of New York's most important examples of mid-century modern design. In 1997, it earned New York City Landmark status, and in 2012, additional measures were enacted to preserve its architectural integrity.



Today, 510 Fifth Avenue continues to evolve—maintaining its celebrated exterior while offering modernized interiors and adaptable floorplates suited for today's tenants.

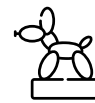


Space Highlights & Availability

This unique office opportunity offers a rare chance to occupy the entire office component of a landmark property—an address that merges architectural legacy with modern potential.



Entire office portion available
40,634 RSF
 contiguous block



Efficient, open layouts ideal for creative, showroom, or financial service users



Glass box penthouse with column free interior and large wraparound terrace



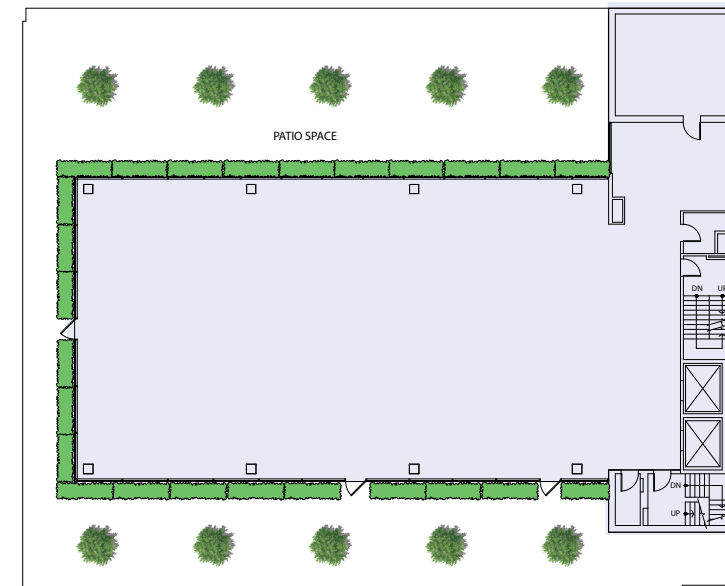
Below-grade space (5,000–7,000 SF usable) offers future potential for flexible tenant use



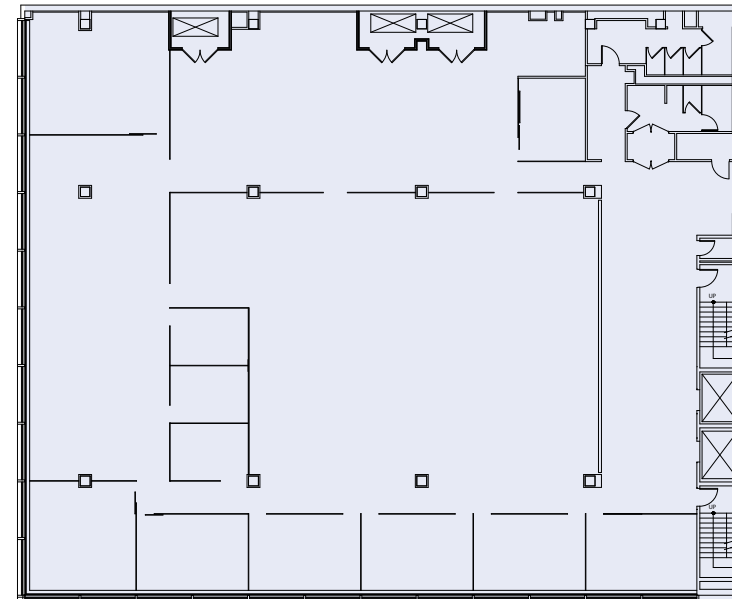
Significant branding opportunity - rooftop flags, exterior branding, and lobby signage available



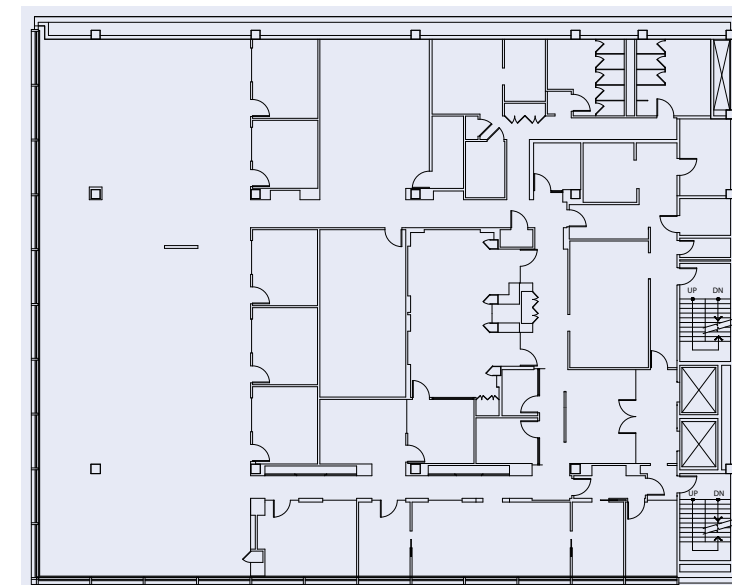
Floor to ceiling windows



5TH FLOOR (PENTHOUSE)
 8,792 RSF



4TH FLOOR
 16,234 RSF



3RD FLOOR
 15,608 RSF

TOTAL RSF
40,634 RSF

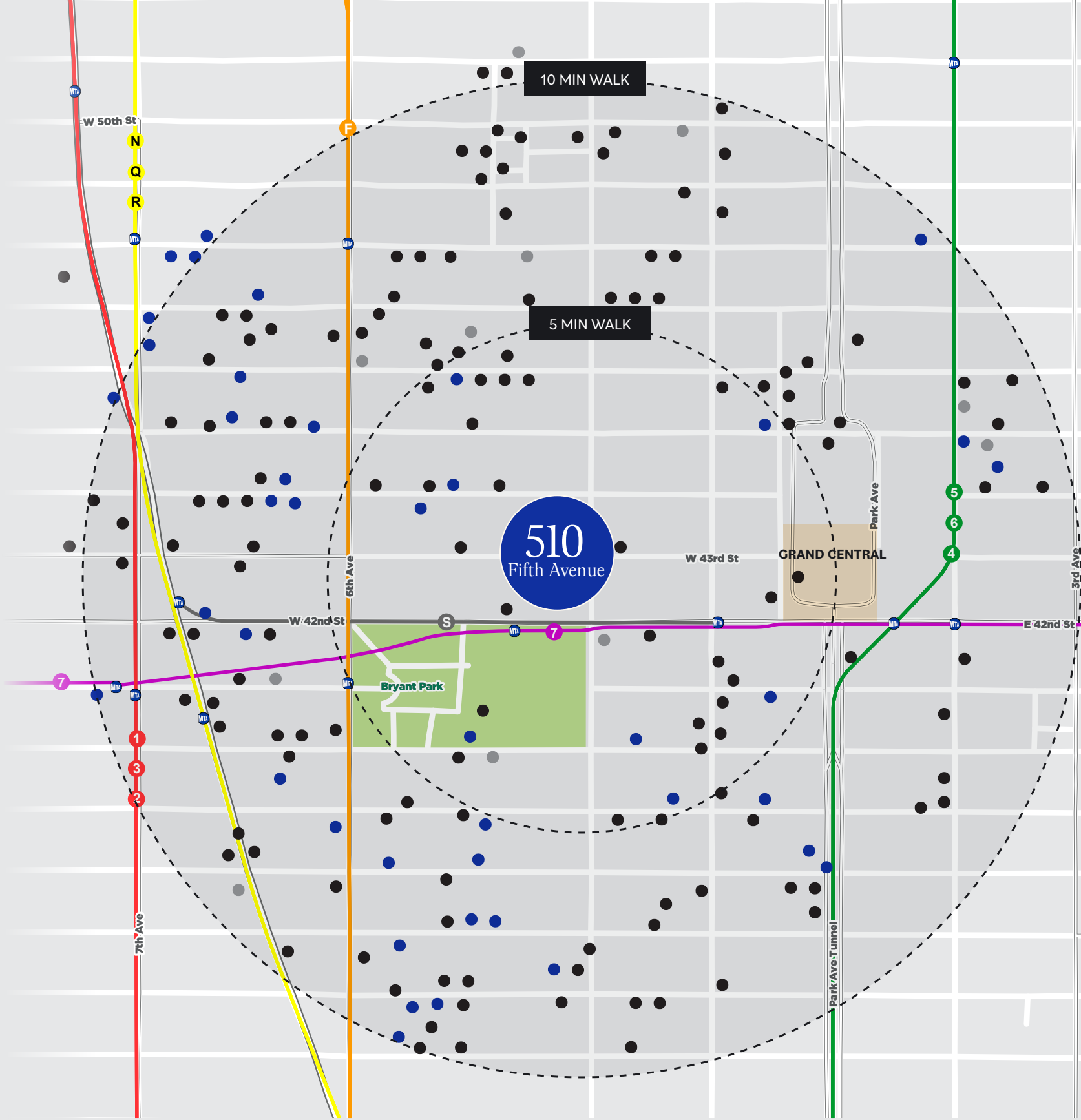
Fifth Avenue

43rd Street

510 FIFTH AVENUE

Location & Connectivity

- Conveniently located one block from Grand Central and Bryant Park
- Steps from major transit lines **B D F M 4 5 6 7** Metro-North, LIRR
- Located within the Transit Triangle (Grand Central, Penn Station & Port Authority)
- Surrounded by world-class retail, dining, and hospitality



11

FITNESS



42

HOTELS



142

RESTAURANTS





Y&R Y&R

CALZEMONIA



THE NORTH FACE

