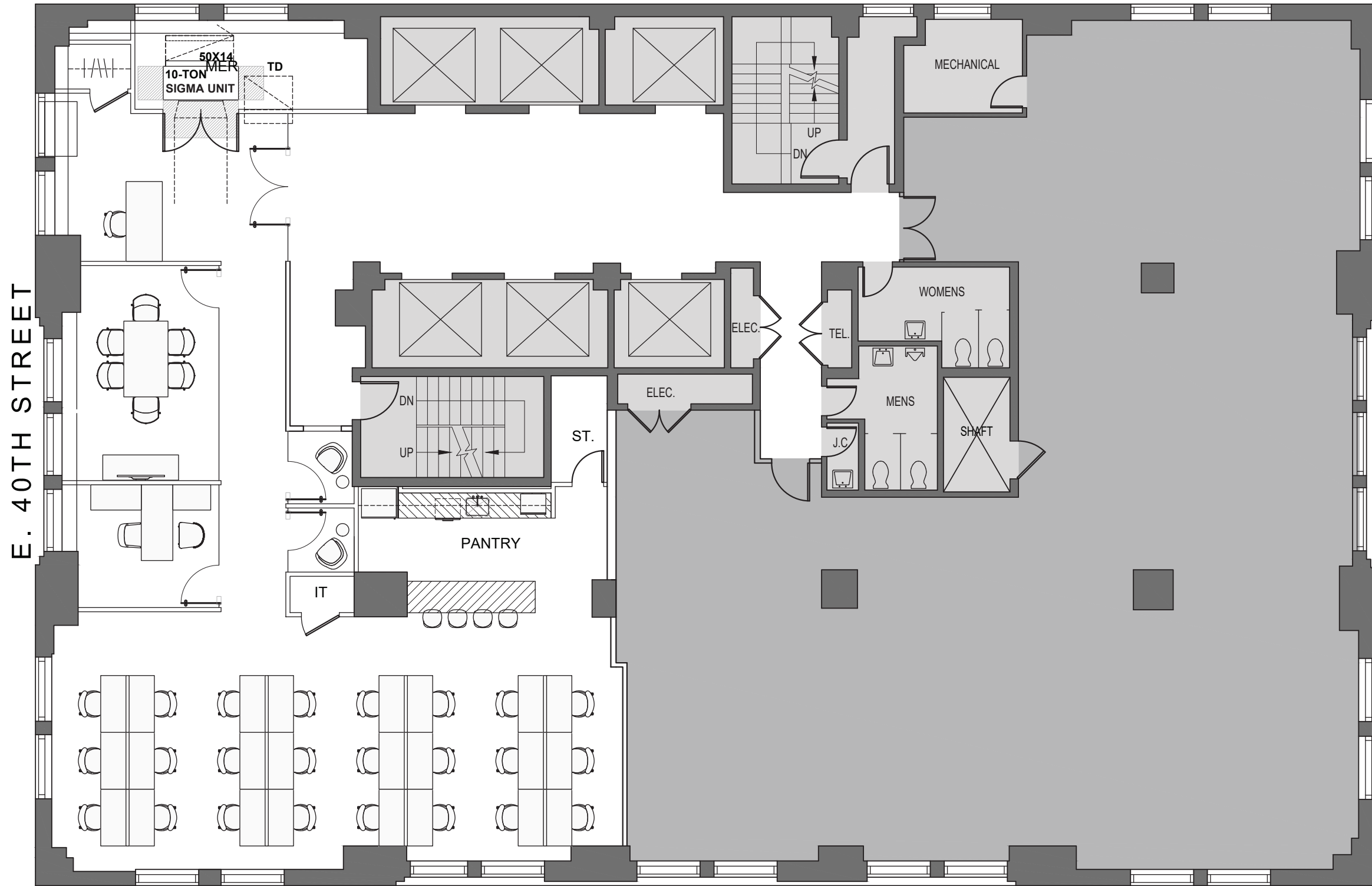


TOWER  
40

—  
BRYANT PARK  
GRAND CENTRAL

10 E. 40TH STREET  
*BUILDING STANDARDS*



LEGEND	
<b>WORKSPACE</b>	<b>SEATS</b>
PRIVATE OFFICE	1
BENCHING (4'6X24")	24
RECEPTION	1
TOTAL HEADCOUNT	26
<b>COLLAB SPACE</b>	<b>QNTY</b>
6P CONFERENCE ROOM	1
<b>SUPPORT</b>	<b>QNTY</b>
PANTRY	1
PHONE ROOM	2
COAT CLOSET	1
MER ROOM	1
STORAGE ROOM	1
IT ROOM	1

FIFTH AVENUE

FLOOR PLAN



MATERIAL PALETTE



**CARPET THROUGHOUT**  
Bentley | Shapeshifter II, Copies,  
18"x36" Ashlar



**PANTRY & ELEVATOR LOBBY  
TILE**  
Casalgrande Padana | Campidoglio,  
Vein  
24"x24"



**RESTROOM TILE**  
AKDO | Mason, Plomb Soft, 12"x24"  
Stack Bond Install,  
Grout: TBD

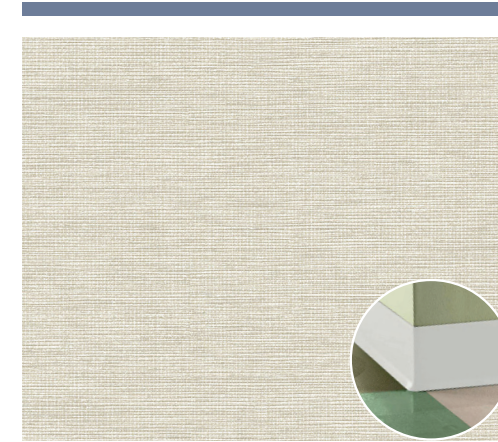
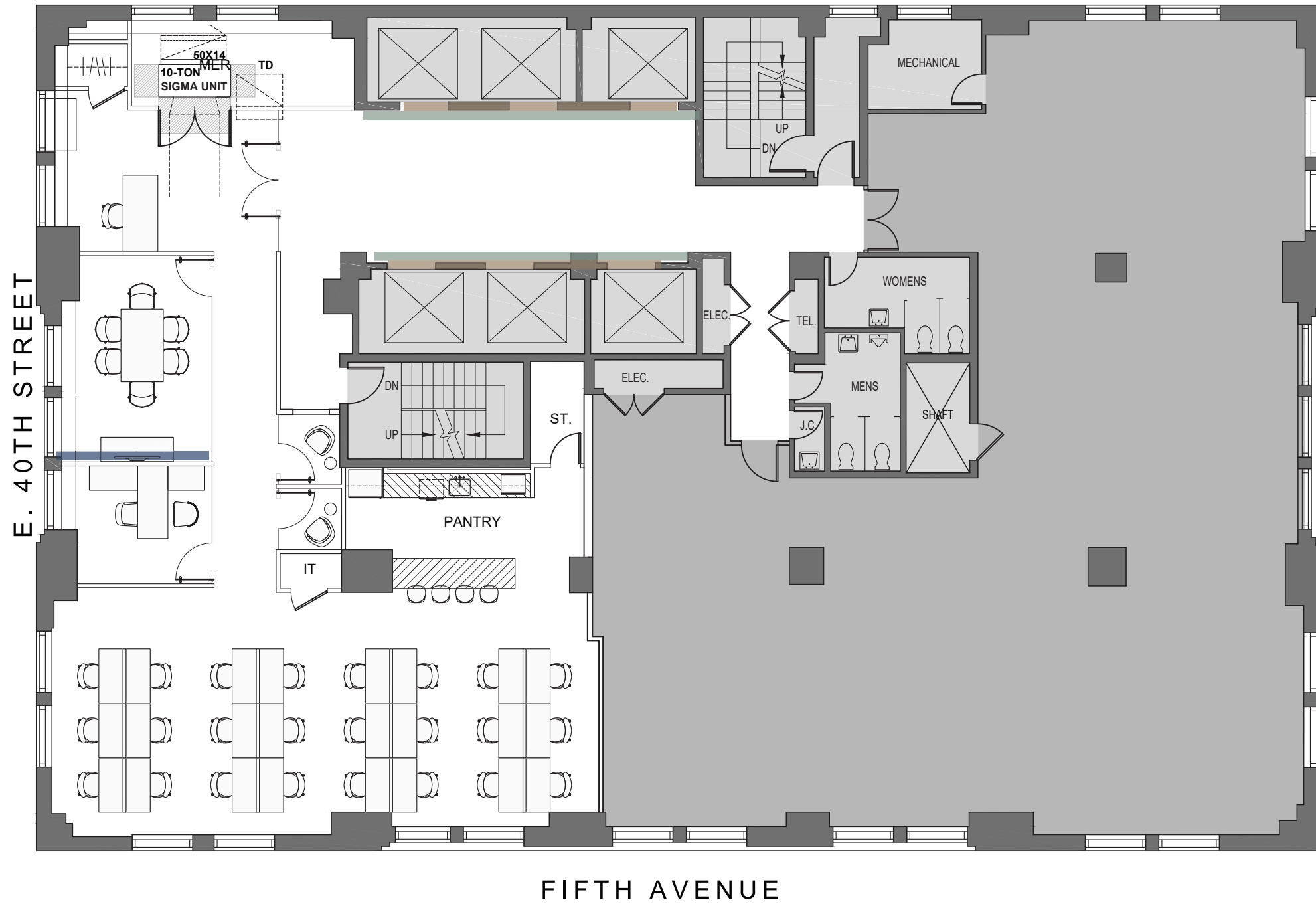


**IT FLOORING**  
Armstrong | Excelon SDT, Fossil Gray  
12"x12" Stacked Install

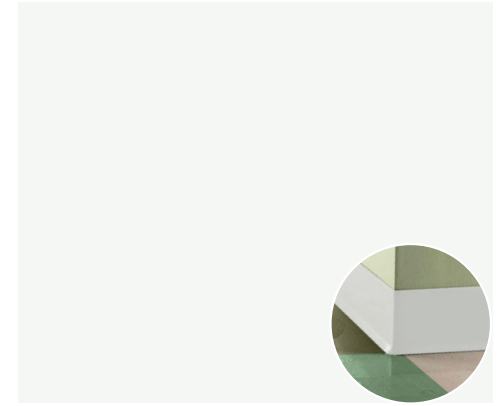


**WOOD FLOORING**  
Nydree | Sun Bleached, Rifted  
& Quartered White Oak, Smooth  
Pedestrian 2.0 UV Cured Urethane  
5.25"Wx12"-48"Lx7/16" Thick

## FLOOR FINISHES



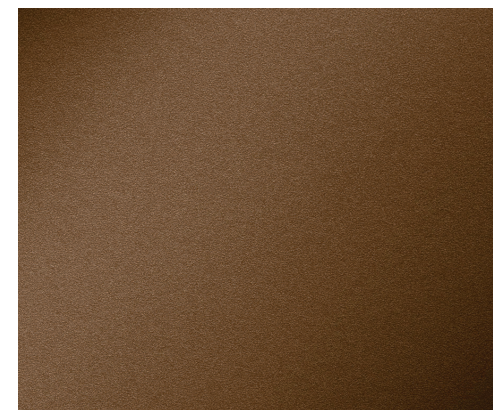
**CONFERENCE ROOM  
WALLCOVERING**  
Wolf Gordon | Teahouse, Parchment



**GENERAL PAINT**  
Benjamin Moore | Chantilly Lace,  
OC-65



**PORCELAIN WALL TILE**  
Casalgrande Padana | Campidoglio,  
Vein  
47"x109"



**ELEVATOR DOOR PAINT**  
Scuffmaster | SM8374



**WALL BASE THROUGHOUT**  
Tarkett | 2.5"H Rolled Goods, Icicle

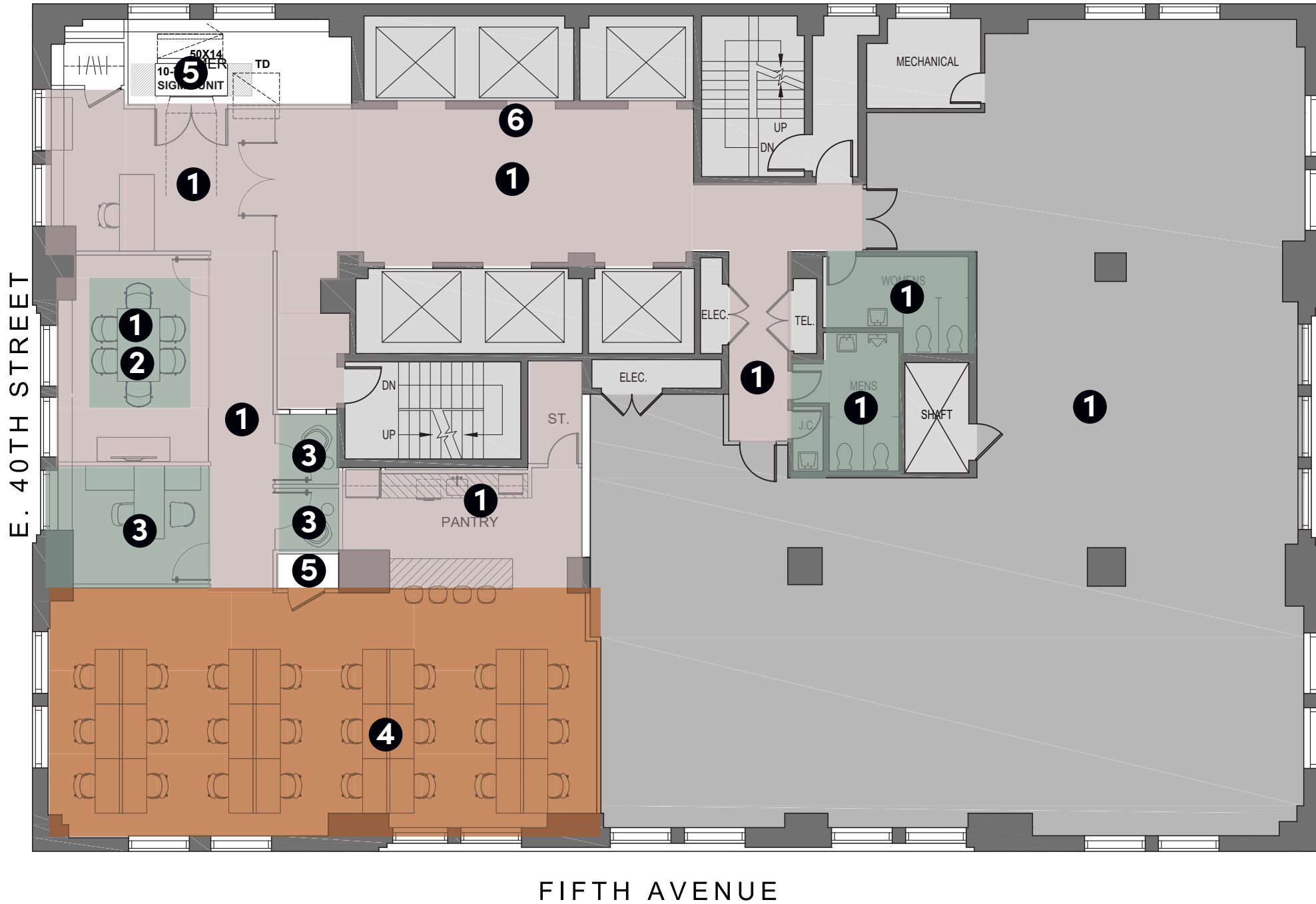


**WALL BASE ACCENT**  
6"H Metal Base Painted to Match  
Scuffmaster SM8148

WALL FINISHES



**COVE LIGHT**  
Coronet | LSR1

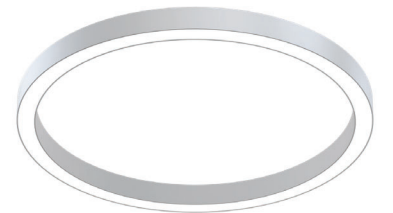


1



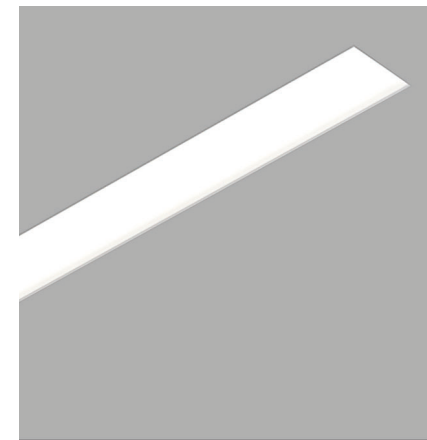
**RECESSED DOWNLIGHT**  
USAI | 4" Square Recessed Downlight

2



**PENDANT**  
Coronet | Ring 30"

3



**RECESSED LINEAR**  
Coronet | LSR4

4



**LINEAR PENDANT**  
Coronet | LS4, White

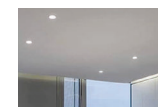
5



**WALL MOUNTED LINEAR LIGHT**  
Coronet | HP 4' Linear Light



**2'X2' ACOUSTIC CEILING TILE**

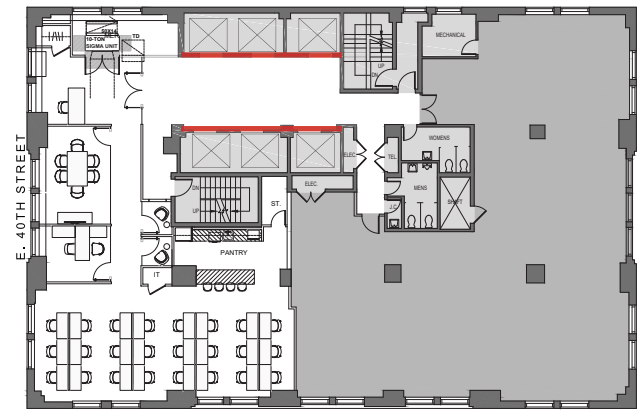


**SHEETROCK**  
Painted With Benjamin Moore Chantilly Lace

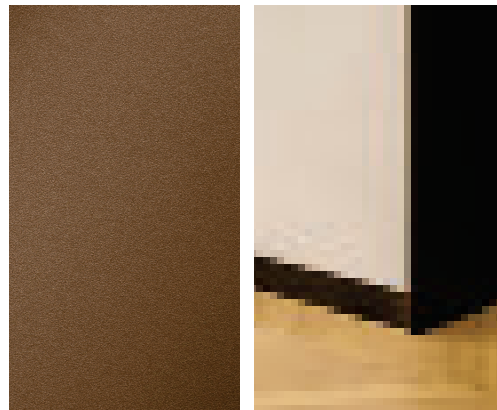


**OPEN SLAB**  
Painted With Benjamin Moore Chantilly Lace

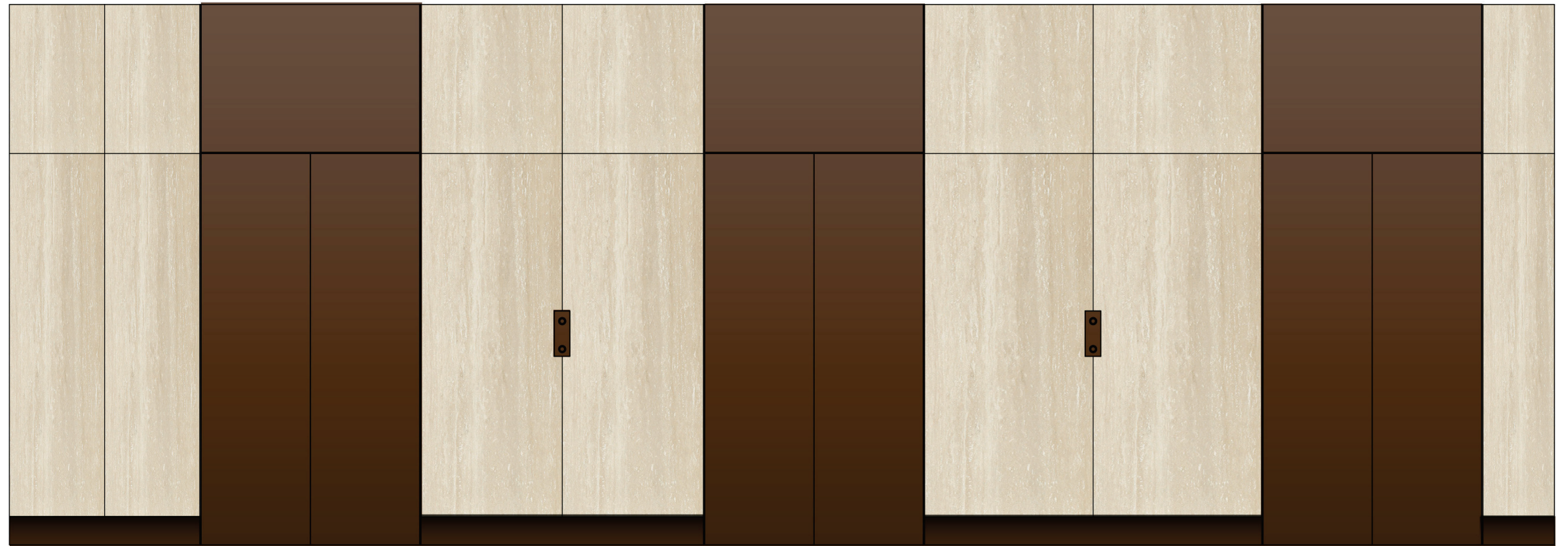
**CEILING & LIGHTING**



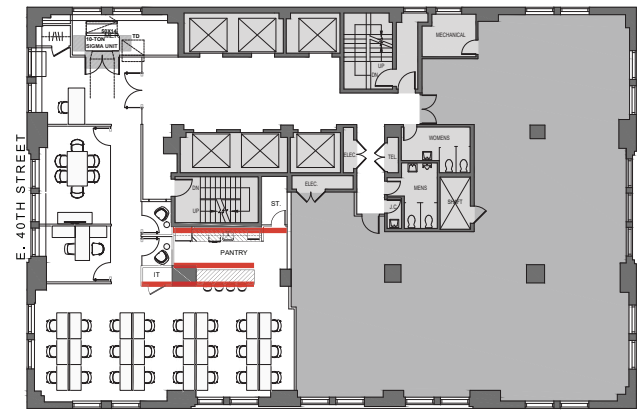
**PORCELAIN WALL TILE**  
Casalgrande Padana | Campidoglio,  
Vein  
47"x109"



**ELEVATOR DOOR, BASE & TRIM  
PAINT**  
Scuffmaster | SM8148, GOH32785353



# ELEVATOR LOBBY



**MILLWORK**

Wilsonart | Walnut Heights, 7965K-12, Soft Grain Finish



**COUNTERTOP**

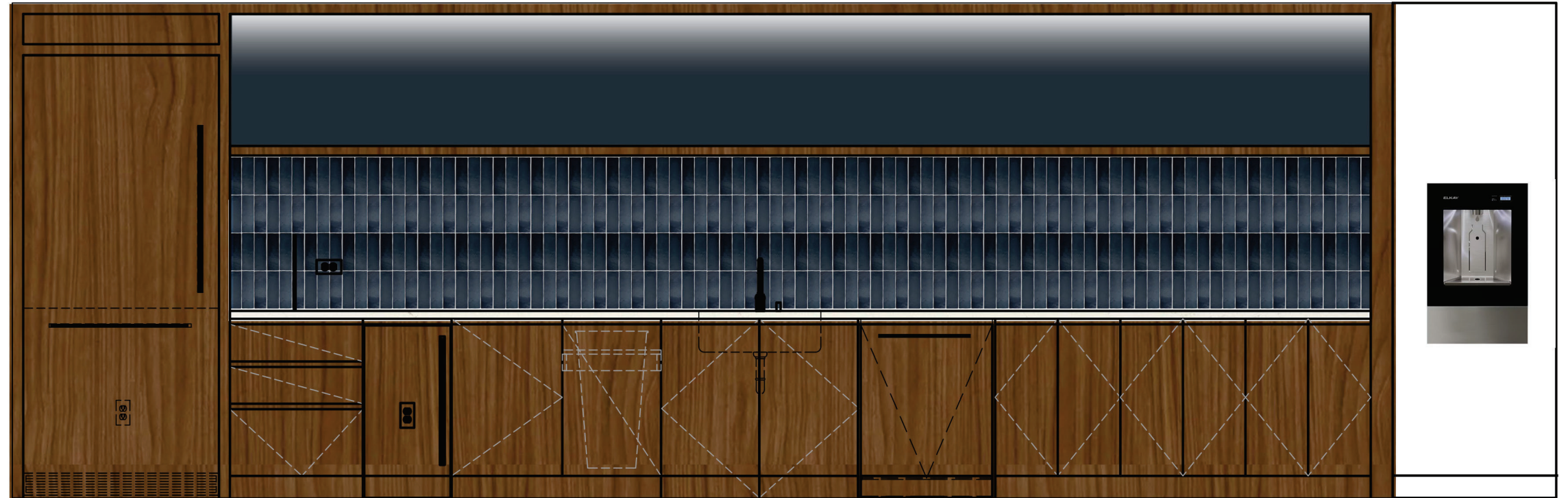
Caesarstone | 5112 Aterra Blanca



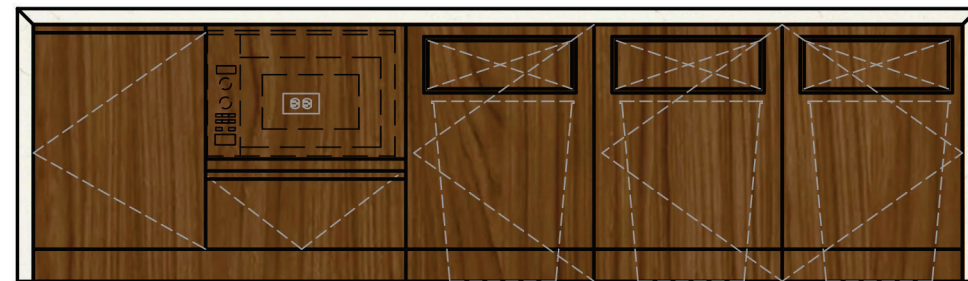
**BACKSPLASH**  
Nemo Tile | Cadence  
2.5x8 Dusk Matte



**PAINT TO MATCH**  
Benjamin Moore |



Elevations shown for design intent only. Specific size of millwork & pantries vary per plan.



PANTRY



**FRIDGE**  
Fisher & Paykel | Series 7  
Integrated Fridge and Freezer,  
36", Panel Ready, Ice  
RS36W80LJI\_N



**APPLIANCE PULL**  
Hafele | Fion, Zinc,  
Matte Black



**ICE MACHINE**  
Hoshizaki | Self Contained  
Cubelet Ice Machine  
C-80BAJ-ADDS



**TRASH BIN**  
Hafele | Waste Bin  
Pull Out, Hafele  
Matrix, Double, Gray,  
503.15.222



**DISHWASHER**  
Elkay | EZH20 LIV Pro In  
Wall Commercial Filtered  
Water Dispenser, Non-  
Refridgerated, Midnight  
LBWDC00



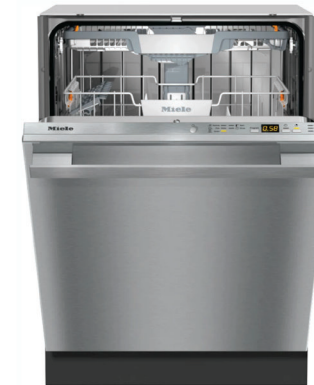
**SINK**  
Elkay | Gourmet  
Lustertone Undermount Single  
Bowl Sink  
ELUHAD191650



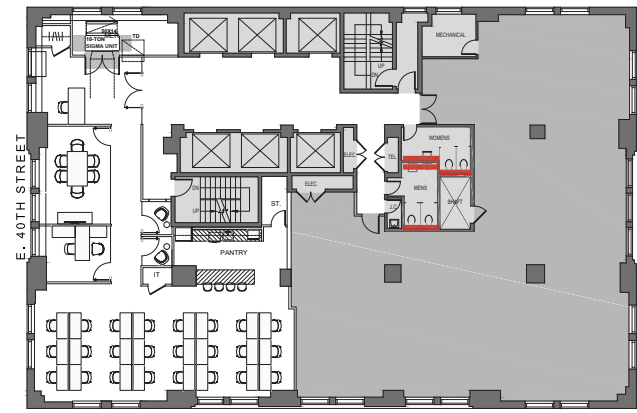
**MICROWAVE**  
Sharp | 24 in. 1.2 cu. ft.  
950W Sharp Black Stainless  
Steel Microwave Drawer  
Oven (SMD2470AH)



**FAUCET**  
Delta | Single Handle  
Pull Down, Matte Black,  
19933-SD-DST + Soap  
Dispenser



**DISHWASHER**  
Miele | 5000 Series Fully  
Integrated,  
Stainless Steel  
G5266SCVISF



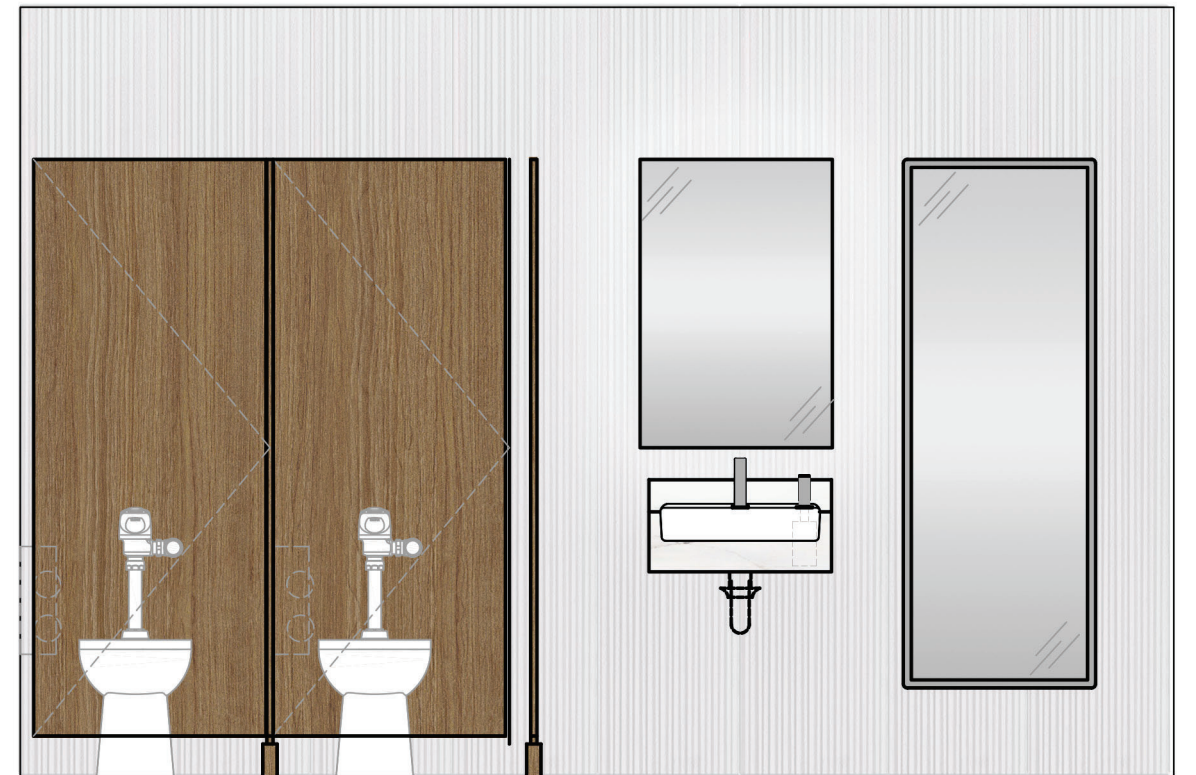
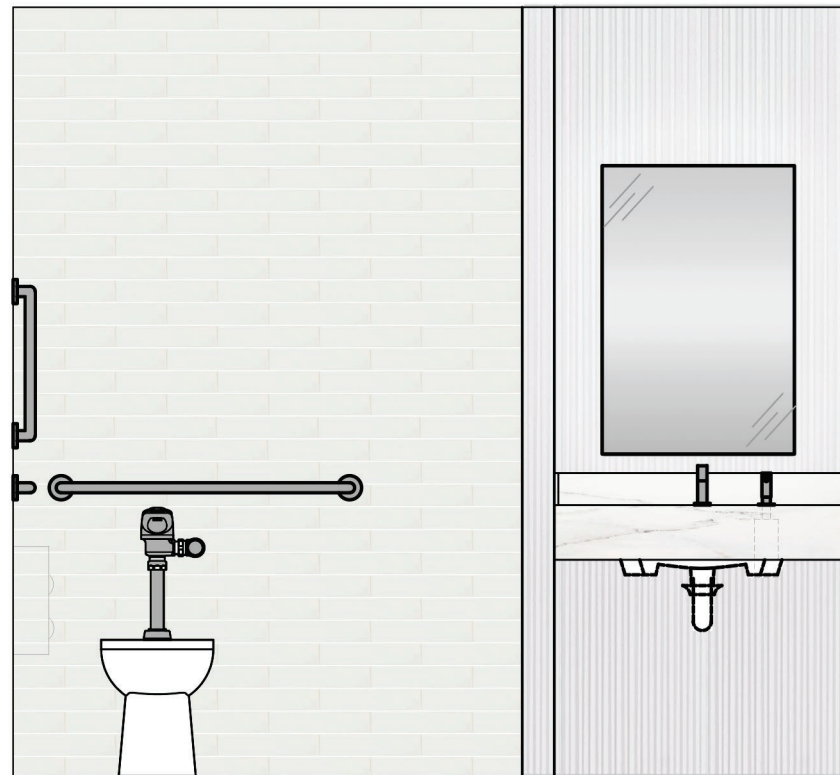
**ACCENT TILE AT SINK**  
Porcelanosa | Spiga Marmi China  
XXL, Colorstruck Blanco, 23"x59"  
Stacked



**COUNTERTOP**  
Cosentino | Dekton Naturale, Rem KC



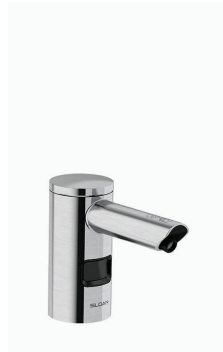
**WET WALL TILE**  
Nemo Tile | Farrow, Fossil, 2"x10"  
Stack Bond



Elevations shown for design intent only. Restroom layouts vary per floor.



**FAUCET**  
Sloan | Optima  
EAF-250, Brushed  
Stainless



**SOAP  
DISPENSER**  
Sloan | ESD-  
2000, Brushed  
Stainless



**SINK**  
Kohler | Verticyl 19-3/4" Rect-  
angular Undermount Bathroom  
Sink, White  
K-2882-0



**TOILET**  
Sloan | ST-2459  
Vitreous China  
Wall-Mounted Water Closet



**TOILET**  
Sloan | ST-2029  
Vitreous China  
Floor-Mounted ADA  
Water Closet



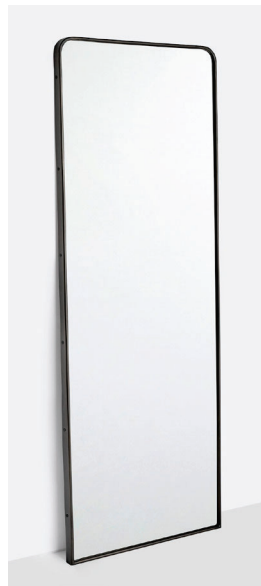
**URINAL**  
Sloan | SU-1009  
Vitreous  
China  
Washdown  
Urinal



**FLUSHOMETER**  
Sloan | G2 8111  
G2 Exposed Sen-  
sor Water Closet  
Flushometer,  
Brushed Stainless



**GRAB BARS**  
Delta | 42", 36" 24" Contemporary  
Decorative ADA Grab Bar in  
Brushed Stainless



**FULL LENGTH  
MIRROR**  
Rejuvenation | Over-  
sized Metal Framed  
Floor Mirror E6138,  
Oil Rubbed Bronze  
24"x66"



**RESTROOM  
MIRROR AT SINKS**  
Sloan | ML Back Lit  
Sloan Wall-hung  
Hardwired Back Lit LED  
Mirror, 24"x36"



**TISSUE DISPENSER**  
Bobrick | B-30919.  
ClassicSeries Surface-  
Mounted Toilet Tissue,  
Seat-Cover Dispenser and  
Waste Disposal, Satin-Finish  
Stainless Steel



**PAPER TOWEL/  
TRASH**  
Bobrick | B-380349.  
Satin-Finish Stainless  
Steel



**HAND DRYER**  
Bobrick | B-7179.  
MBLK



**PARTITONS**  
Bobrick | Cello, 0811-FH

## RESTROOM FIXTURES