

THE ANSONIA RETAIL COLLECTION - UPPER WEST SIDE

MEDICAL/SCHOOL/STUDIO OPPORTUNITY

With Dramatic Dedicated Entrance



CONCEPTUAL RENDERING

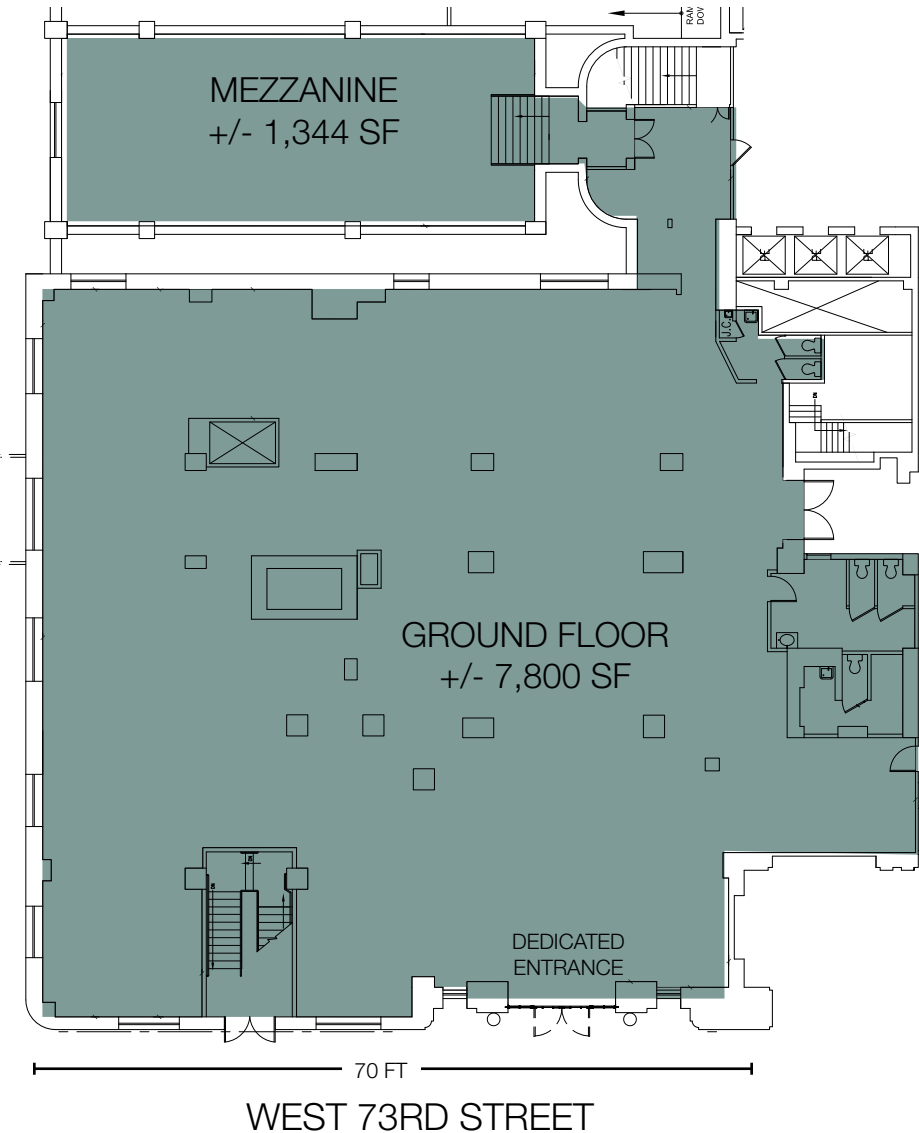
221 WEST 73RD STREET BETWEEN BROADWAY & WEST END AVENUE

Approx. 7,800 SF on the Ground Floor plus Mezzanine, currently occupied by the American Musical & Dramatic Academy

At the base of the Ansonia, one of the Upper West Side's most iconic luxury residences with 400 residential units above

MEDICAL/SCHOOL/STUDIO OPPORTUNITY

Will feature a new dramatic entrance on West 73rd Street next to the building's commercial lobby entrance, with co-tenants including The Goddard School, Mt. Sinai, Masa Kanai Salon, Sephora, Wells Fargo and SLT Fitness



RENDERING OF PROPOSED DEDICATED ENTRANCE



221 WEST 73RD STREET BETWEEN BROADWAY & WEST END AVENUE

Convenient Upper West Side location steps from the 72nd Street subway station with express stops from Penn Station and Port Authority commuter hubs

