

PREMIUM SUBLEASE OPPORTUNITY AT

545 Fifth Avenue

Partial 14th Floor | 9,601 RSF





PROPERTY DETAILS

14th Floor | 9,601 RSF

High-end Installation
with Private Terrace

Available Immediately

Close to Grand Central
and
9 Subway Lines

Term Through October
2029

Walking Distance from
Bryant Park

Surrounded by
First-Class
Retail and Dining
Options

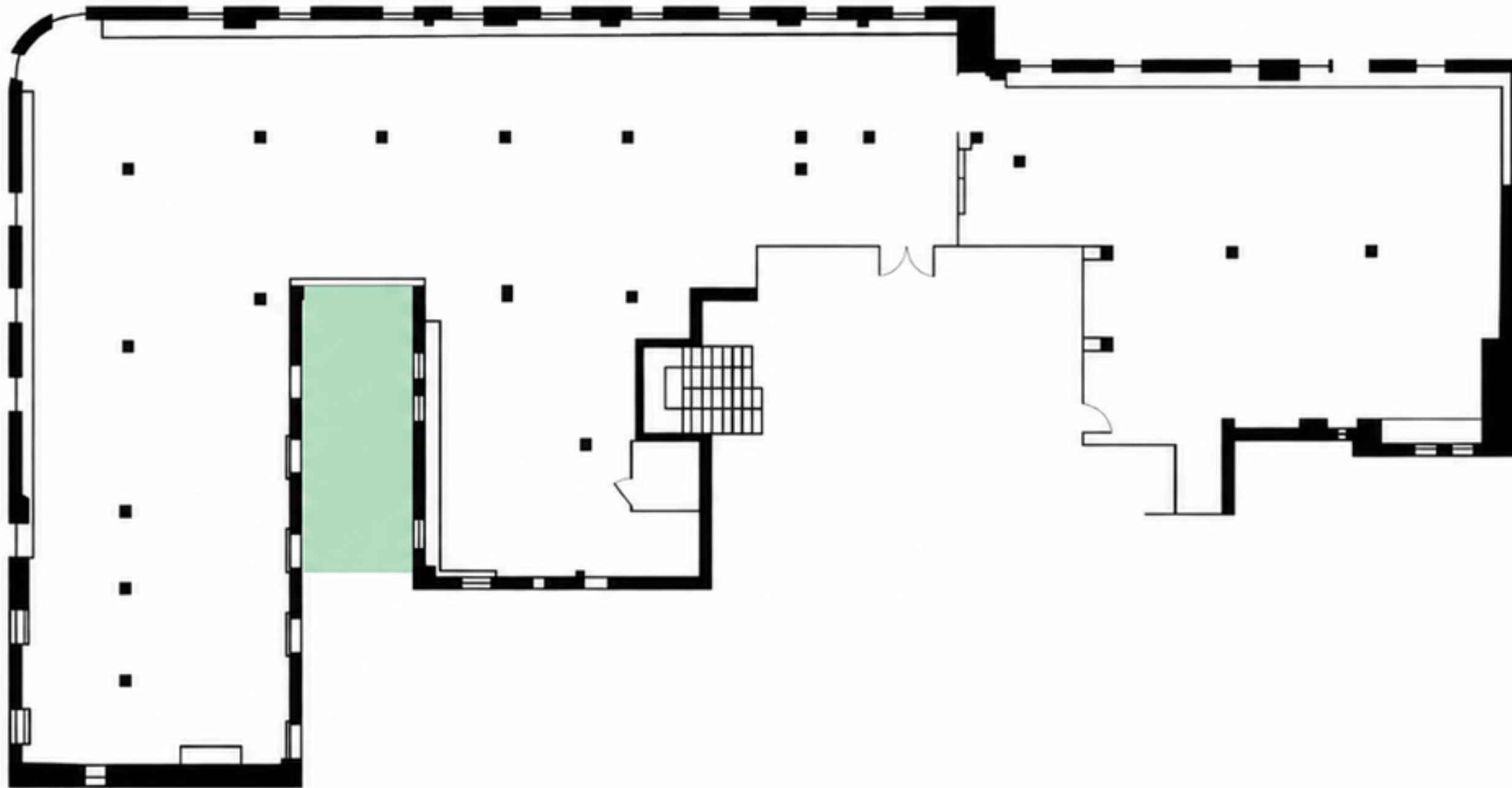
545 FIFTH AVENUE

SPACE PHOTOS



FLOOR PLAN

Partial 14th Floor | 9,601 RSF



SPACE DETAILS

19 Workstations

6 Private Offices

3 Boardrooms

4 Conference Rooms

2 Phone Rooms

2 Pantries

Private Terrace