

For **sublease**

Top of House at One Vanderbilt

One Vanderbilt Avenue, New York, NY 10017

SPACE PROFILE

9,871

Total RSF

Entire 73rd

Floor

Upon Request

Asking Rent

Immediate

Possession

5/30/2033

Term

KEY HIGHLIGHTS

- Full Floor Presence at the top of One Vanderbilt
- Extraordinary views in all directions
- Private terrace with southern facing views
- Floor is built out with 1 executive office, 6 windowed offices, 4 workstations, 1 conference room (14 seats), lounge, and pantry
- 24' ceiling heights
- Excellent credit Sublandlord
- 30,000 SF building amenity center includes outdoor terrace, upscale lounge, and conferencing facility
- Direct access to Grand Central Terminal



One Vanderbilt Avenue, New York, NY 10017



One Vanderbilt Avenue, New York, NY 10017



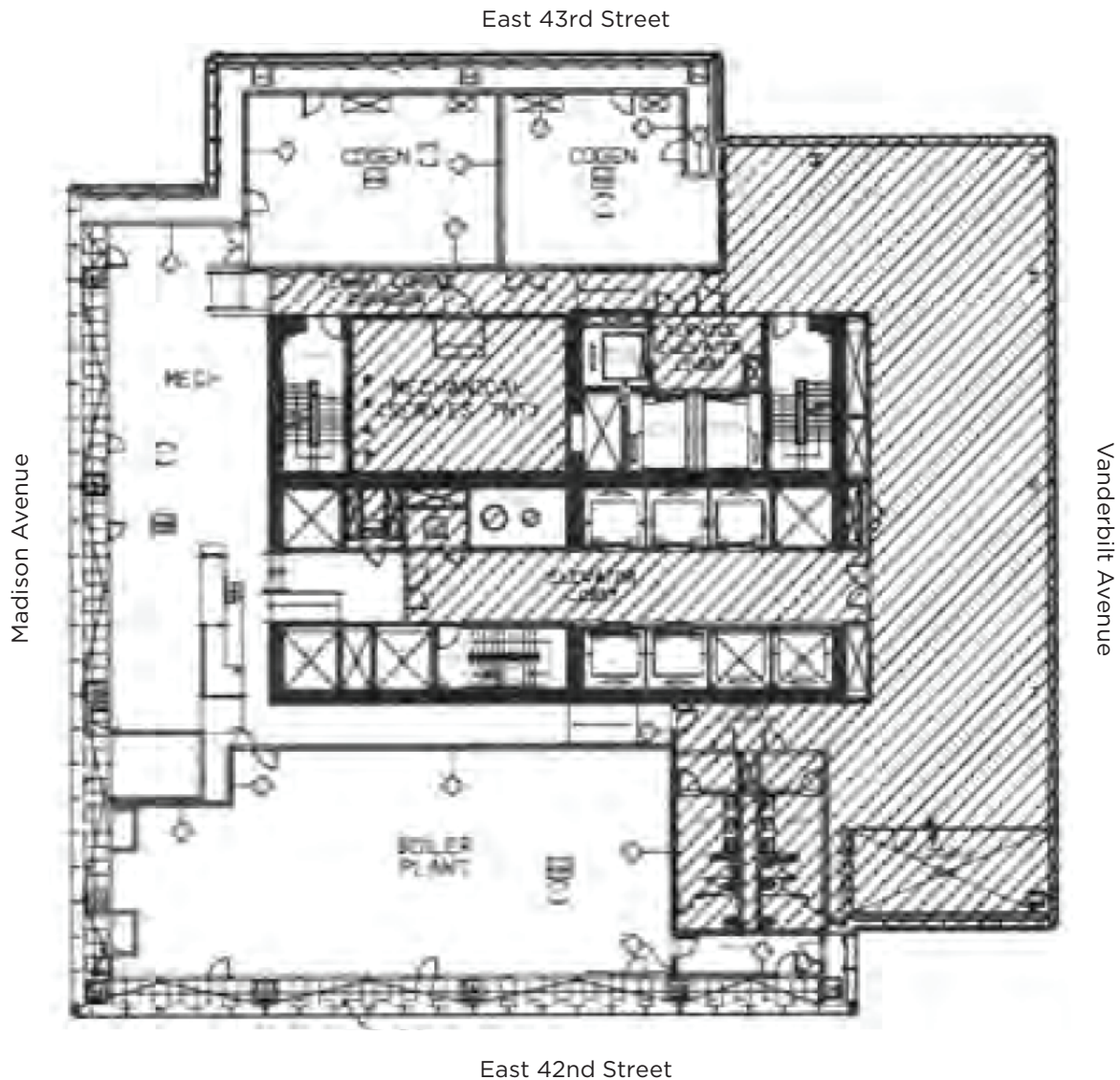
One Vanderbilt Avenue, New York, NY 10017



One Vanderbilt Avenue, New York, NY 10017

ENTIRE 73RD FLOOR

9,871 RSF



SPACE OVERVIEW

- 1 executive office
- 6 windowed offices
- 4 workstations
- 1 conference room (14 seats)
- lounge
- pantry