



Example of Common Area and Reception

110 East 42nd Street

PRODUCTS
[OFFICES](#) | [ACCESS](#) | [VIRTUAL](#)

INCLUDED SERVICES

- 24/7 Access
- Wellness Room
- Office Supplies
- Fast, Secure Wi-Fi
- Community Events
- Professional-Grade Cleaning
- Mail & Packaging
- Daily Breakfast & Snacks
- Weekly Happy Hours
- Dedicated On-Site Staff
- Unlimited Color Printing
- Industrious App

LOCATION SPECIFIC SERVICES/AMENITIES

- Dining Options
- Retail Options
- Event Space
- 24/7 Security

Boasting the highest customer satisfaction in the flexible office industry, Industrious locations offer the best solution for coworking access, private offices and suites, and on-demand meeting space. With flexible terms and all-inclusive pricing, members also have access to locations in 65+ markets across the U.S, U.K., Europe, and Asia.

LOCATION OVERVIEW

At Industrious Grand Central, the city moves at your pace. Located at 110 East 42nd St—right across the street from Grand Central Station—this workspace puts you in the center of it all. Housed within a historic Italian Romanesque Revival building, it spans two beautifully designed floors with private offices, shared lounges, and meeting rooms made for focus and flow. Commuting couldn't be easier, with Metro North, the LIRR, and the 4, 5, 6, 7 and S lines just steps away. You can spend more time enjoying your workday and less time worrying about your commute.



Example of Meeting Room



Example of Cafe

COMMUNAL / SHARED AREAS

2

CAFÉS/LOUNGES

23

PHONE BOOTHS

13

CONFERENCE ROOMS

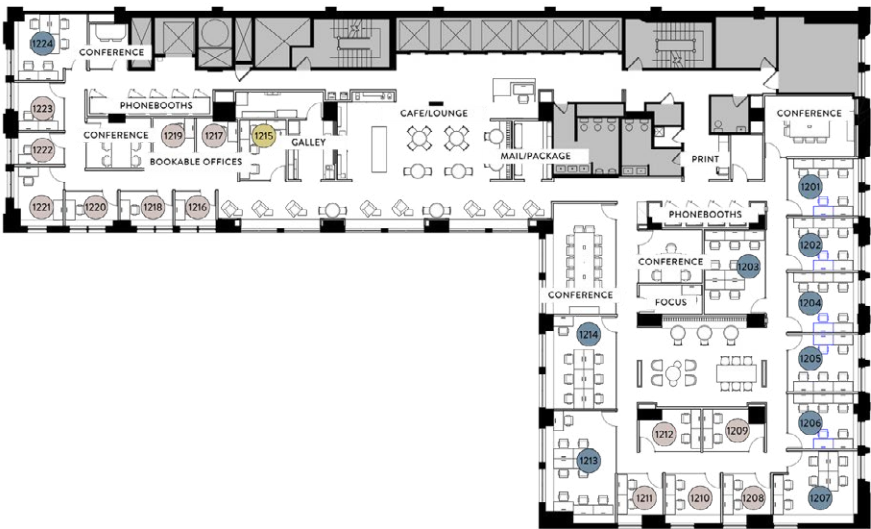


Example of Private Office

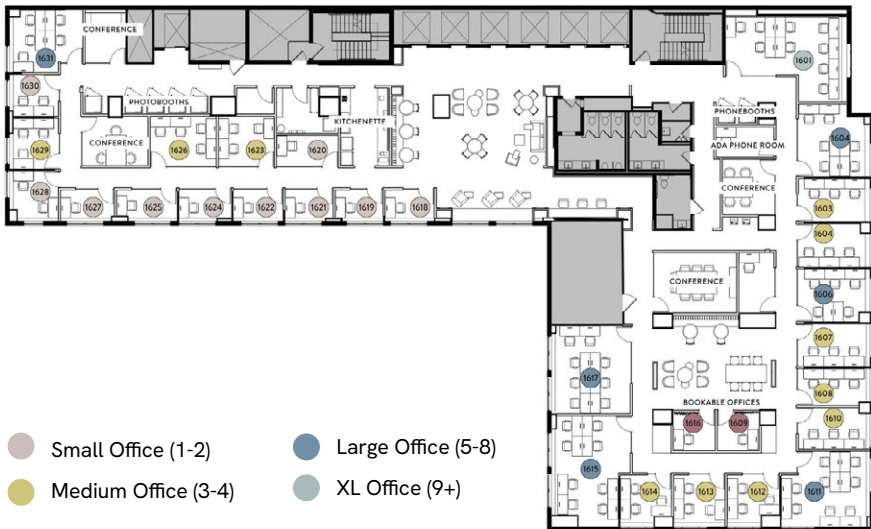
11TH FLOOR



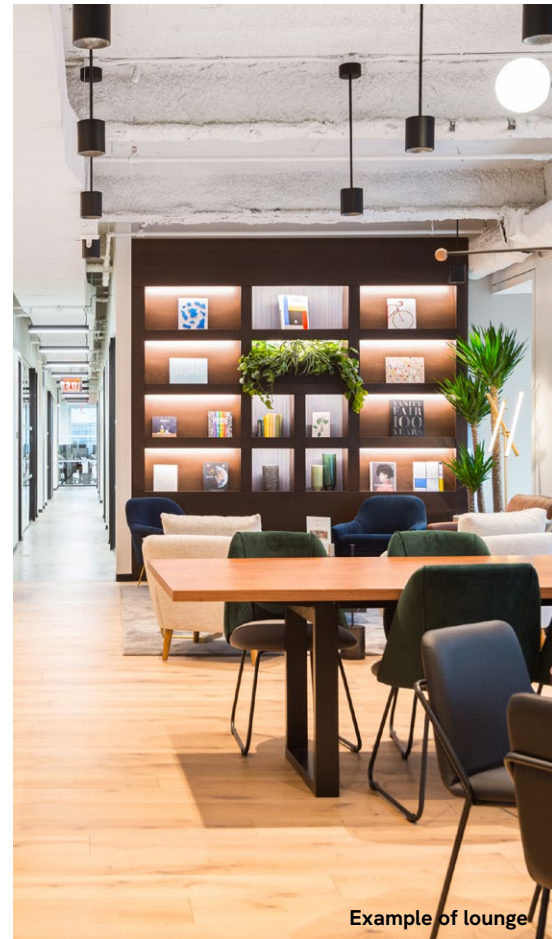
12TH FLOOR



16TH FLOOR - Available Early 2027



- Small Office (1-2)
- Medium Office (3-4)
- Large Office (5-8)
- XL Office (9+)



110 East 42nd Street

