

CHELSEA OFFICE CONDOMINIUM

 137
West
25th
Street

between Sixth and
Seventh Avenues

New York, NY



CHELSEA OFFICE CONDOMINIUM

 137
West
25th
Street

between Sixth and Seventh Avenues
New York, NY



AVAILABLE

Entire 4th Floor:
7,690 RSF

Asking Price:
\$6,500,000 (\$845/RSF)

Annual Common Charges:
\$45,260 (\$5.89/RSF)

Annual Real Estate Taxes:
\$107,669 (\$14.00/RSF)

Possession:
Immediate

Highlights

- Creative, loft space with an abundance of natural light
- Constructed with a commercial kitchen and catering facility
- 12' ceiling heights
- Tremendous owner/occupancy financing available, making the cost of owning less than leasing
- Located in the heart of Silicon Alley, the street has attracted major office redevelopment and prestigious creative and tech firms
- Recently renovated lobby that is attended
- Close proximity to Madison Square Park, Union Square and many restaurants



Creative loft space with 12' ceilings



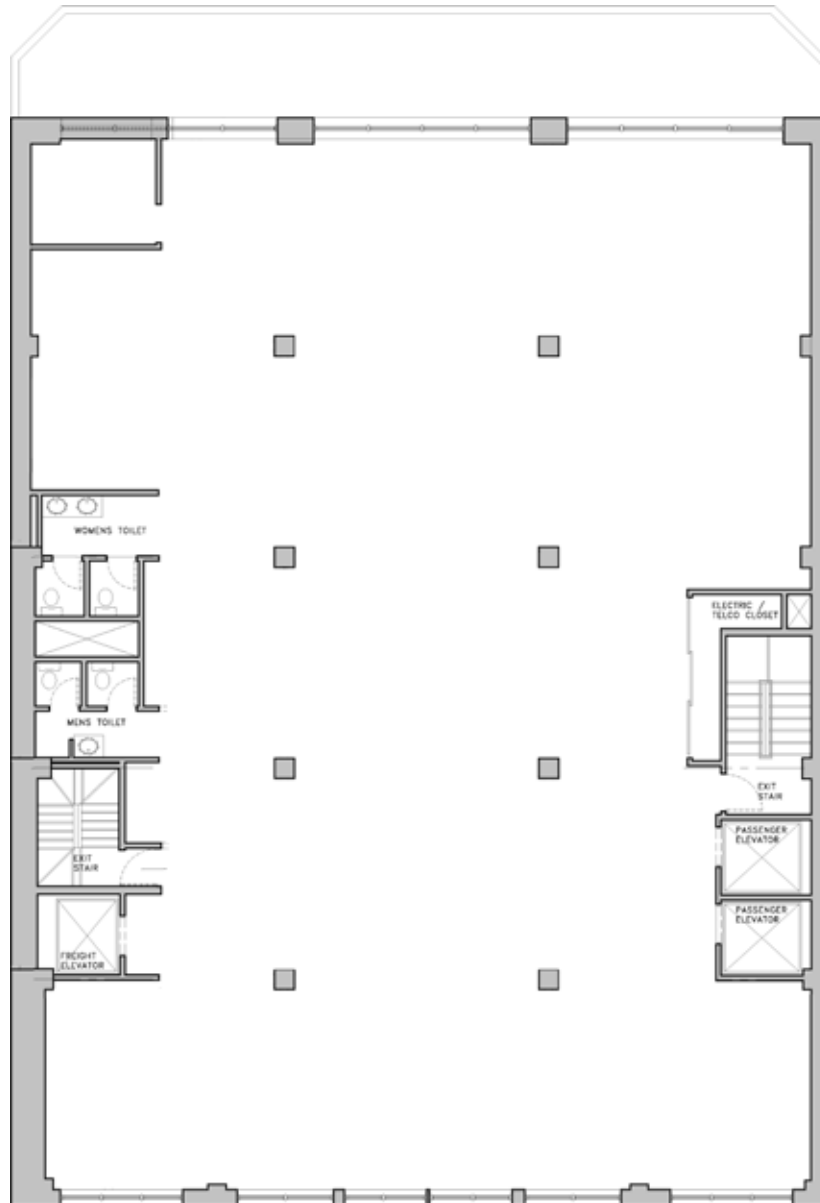
Constructed with a commercial kitchen



Newly renovated lobby and upgraded building infrastructure



137
West
25th
Street



WEST 25TH STREET

ENTIRE 4TH FLOOR: 7,690 RSF



137 West 25th Street

