

GRAND CENTRAL
OFFICE CONDOMINIUM

110 | EAST 40TH
STREET

NEW YORK, NY
BETWEEN PARK & LEXINGTON AVENUES

PRICE IMPROVEMENT

GRAND CENTRAL
OFFICE CONDOMINIUM

110 | EAST 40TH
STREET

NEW YORK, NY
BETWEEN PARK & LEXINGTON AVENUES



Available: Unit 704: 2,862 RSF

Asking Price: \$1,750,000 (\$611/RSF)

Annual Carrying Costs: \$48,345 (\$16.89/RSF)

Highlights:

- Prestigious location between Park and Lexington Avenues
- Natural light and views overlooking 40th Street and Park Avenue
- Recently constructed high-end medical office installation
- Newly renovated attended lobby, elevators and common corridors
- Steps from Grand Central Terminal





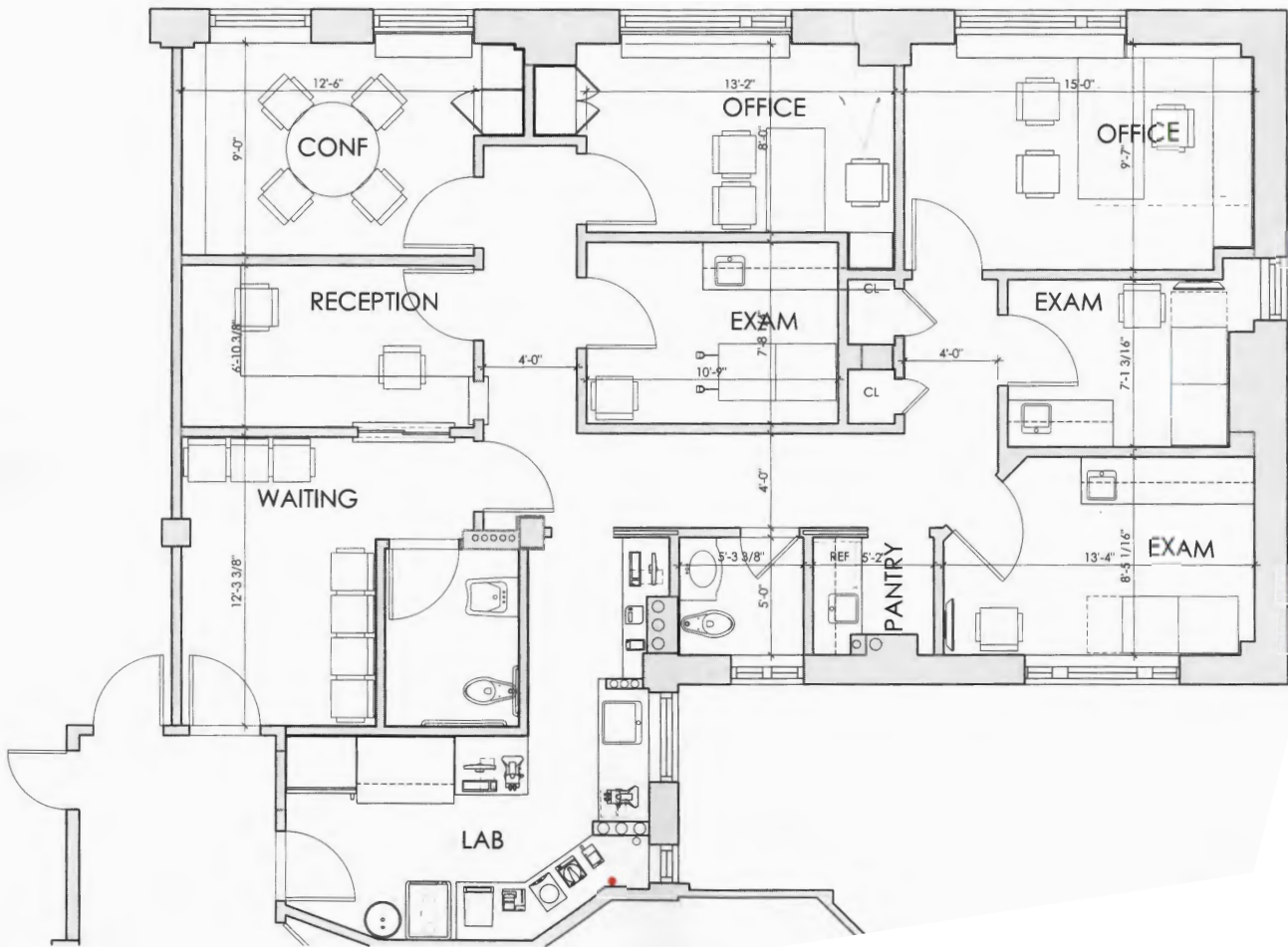


Building Lobby

110

EAST 40TH STREET

East 40th Street



110 | EAST 40TH STREET

