

BRYANT PARK OFFICE CONDOMINIUMS



24W40



24 West 40th Street
New York, NY

between Fifth and Sixth Avenues



BRYANT PARK OFFICE
CONDOMINIUMS



24 West 40th Street
New York, NY
between Fifth and Sixth Avenues

Floor	Size	Annual R.E. Taxes	Available	In-Place Rent	Rent/RSF
Entire 4th	5,579 RSF	\$67,830	Immediate		\$55.39
Entire 5th	5,579 RSF	\$64,921	Immediate	\$386,300	\$69.24
Total	11,158 RSF				

*Can be delivered vacant

Annual Common Charges: \$11.51/RSF

Property Highlights:

- Over 50 feet of large northern facing windows providing beautiful unobstructed views of Bryant Park
- Full floor units with elevator opening directly onto floor and unit owner-controlled HVAC
- Efficient floor plate with high ceilings
- Newly renovated attended lobby with new elevators
- Prime Midtown location with convenient access to the 1, 2, 3, 4, 5, 6, B, D, F, M, N, Q, R, and W subway lines, and Grand Central Terminal





5th Floor



5th Floor



6th Floor

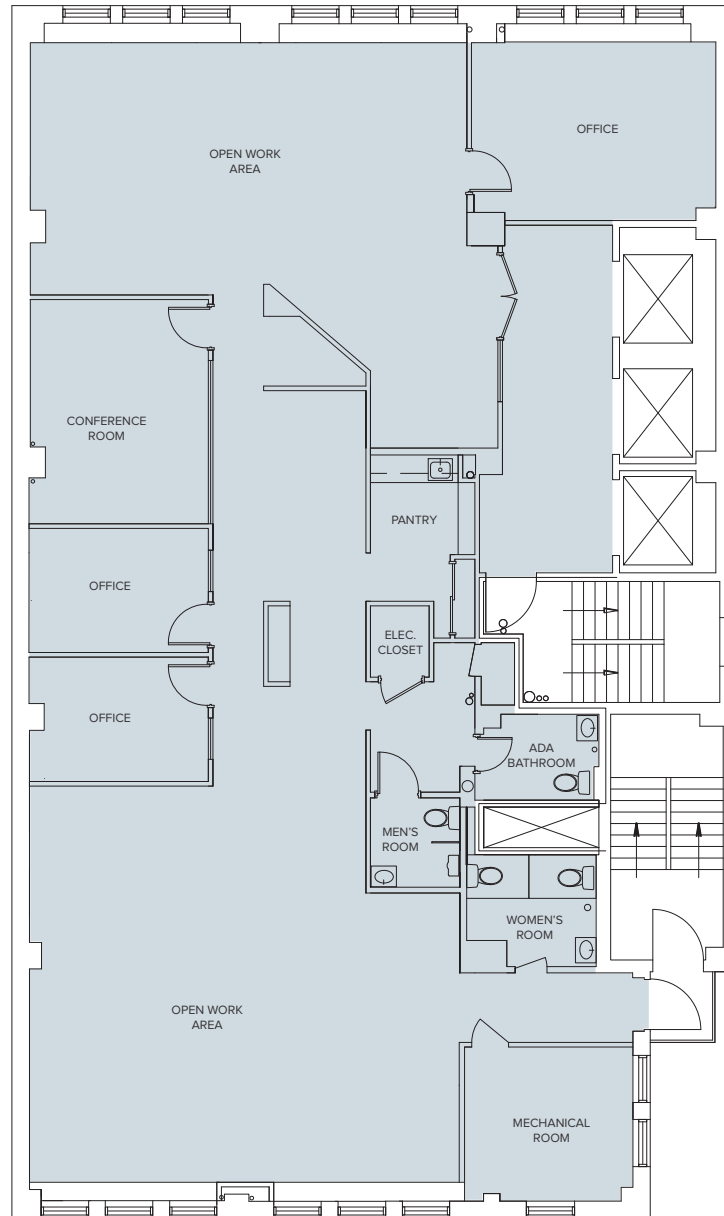


Lobby



24W40

WEST 40TH STREET



Entire 4th Floor: 5,579 RSF



24W40

