

211 EAST
43RD
STREET

211 EAST 43RD STREET



**24-story building
located 2 blocks from
Grand Central Station**



**Super
affordable
offices**



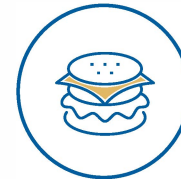
**Close to the 4, 5, 6, 7, S & Metro
North lines, easy commute to
Connecticut and Upstate NY**



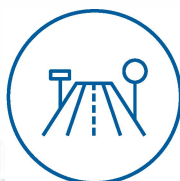
**25,000+ square feet
to grow into
when you need it**



**Parking
garage
next door**



**Steps away from
great restaurants
and shopping**

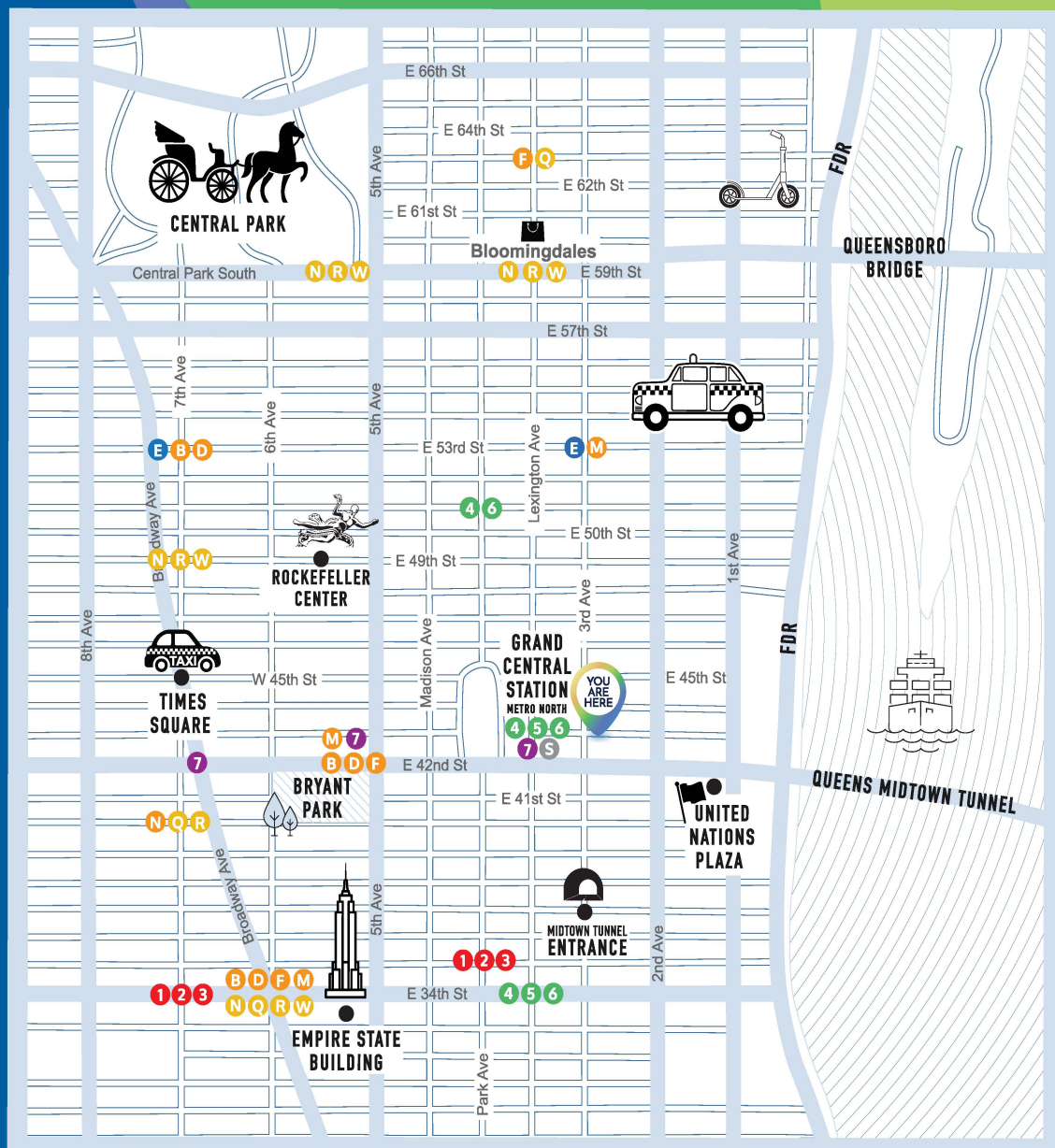


**Quick access
to the FDR and
BQE highways**



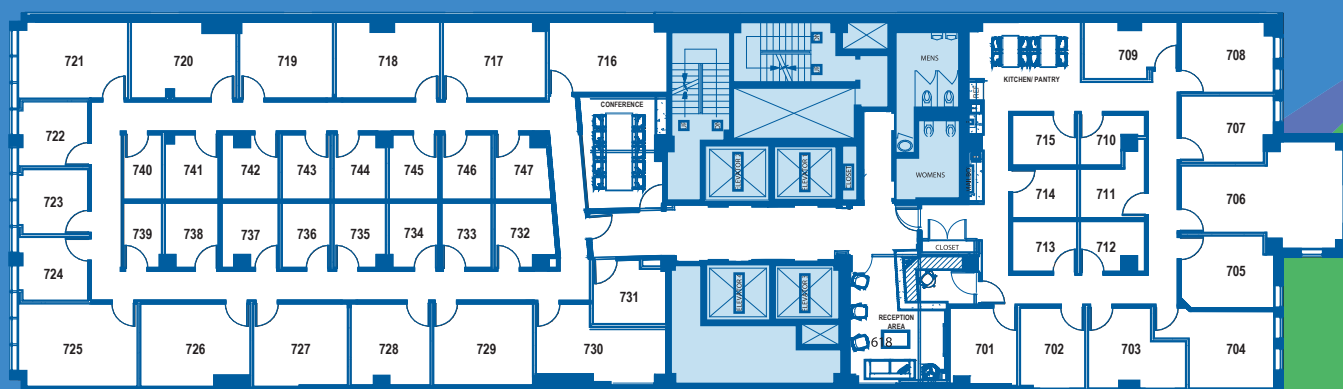
NEIGHBORHOOD HIGHLIGHTS

Conveniently located near subways, Grand Central Station, and the FDR



PROPERTY FLOOR PLANS

7TH FLOOR



6TH FLOOR



INCLUDING EVERYTHING IT TAKES TO RUN AN OFFICE



Our private office suites come complete with tons of great amenities.



PRIME
LOCATION



SQ. FT.



SUITES



*HIGH-SPEED
INTERNET



*PHONE
SERVICE



CONFERENCE
ROOM



OFFICE
FURNITURE



COMPLIMENTARY
REFRESHMENTS



DAILY
CLEANING



PRINTER/SCAN/FAX
CAPABILITY



ADMINISTRATIVE
SUPPORT



ELECTRIC/HEATING
& COOLING



KITCHEN &
KITCHENETTE



MAIL HANDLING



RECEPTIONIST



MAINTENANCE

ONLY PAY FOR WHAT YOU NEED WITH OPTIONAL ADD-ONS



LIVE
RECEPTION
ANSWERING



LOCAL PHONE
NUMBER CALL
FORWARDING



LISTING IN
BUILDING
DIRECTORY



CONFERENCE
ROOM USAGE



CLERICAL
SUPPORT