

# FOURTH FLOOR MEDICAL CONDO

PRICE \$1,790,000  
APPROX SIZE 1,000 SQ FT  
APPROX MAINT \$1,500 PER MONTH  
APPROX TAXES \$11,000 PER YEAR  
FINANCING 50% MAXIMUM



**30 CENTRAL PARK SOUTH, 4A**  
CENTRAL PARK SOUTH, MANHATTAN, NY 10019



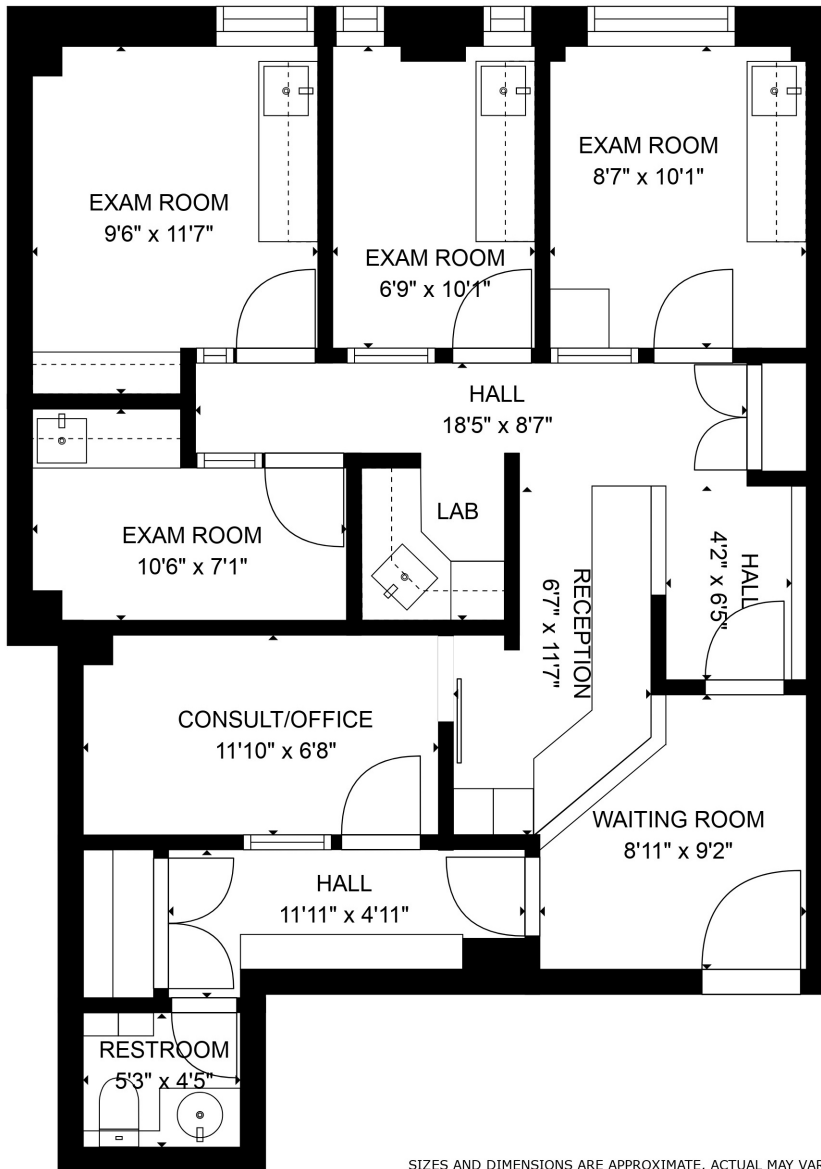
## LAYOUT

- WAITING ROOM
- RECEPTION AND ADMINISTRATIVE AREA
- FOUR EXAM ROOMS
- CONSULT/OFFICE
- UTILITY ROOM
- RESTROOM

## ADDITIONAL FEATURES

- FOUR WINDOWS FACING CENTRAL PARK
- CENTRAL AIR CONDITIONING
- PRISTINE, MOVE-IN READY DENTAL SUITE
- ADAPTABLE TO MANY MEDICAL SPECIALTIES





SIZES AND DIMENSIONS ARE APPROXIMATE, ACTUAL MAY VARY.

