

12 WEST 31ST STREET

Ground Floor Retail

AVAILABLE SPACE

Ground Floor: 2,001 SF

Lower Level: 1,411 SF

Total: 3,412 SF

ASKING RENT

Upon Request

TERM

Immediate Sublease Term 3-8 Years

22 Feet of Frontage on West
31st Street

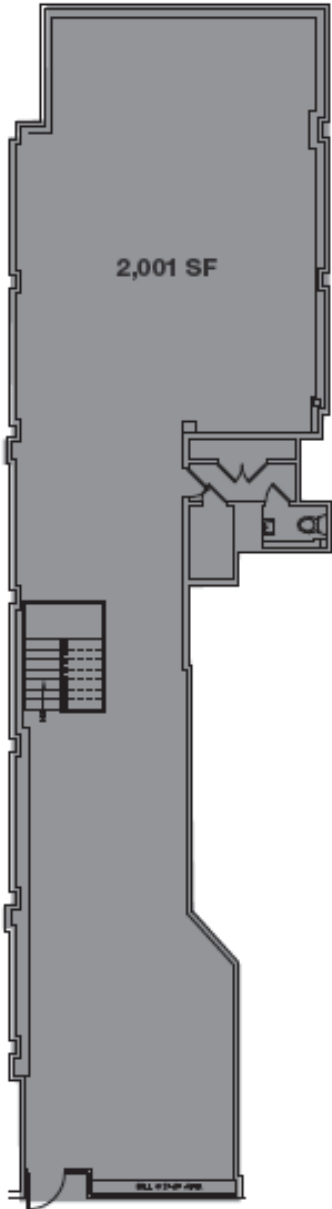
SPACE DESCRIPTION

- Fully built ground and usable lower level with exposed wood beams, exposed bricks, two full bathrooms, 1 shower
- Direct access to lower level via internal staircase
- At the intersection of Manhattan's Nomad district and Midtown South
- Two blocks south of the Empire State Building and one block south of Koreatown's major thoroughfare
- Directly between Herald Square and Madison Square Park
- Ideal for salons, accessories and showrooms



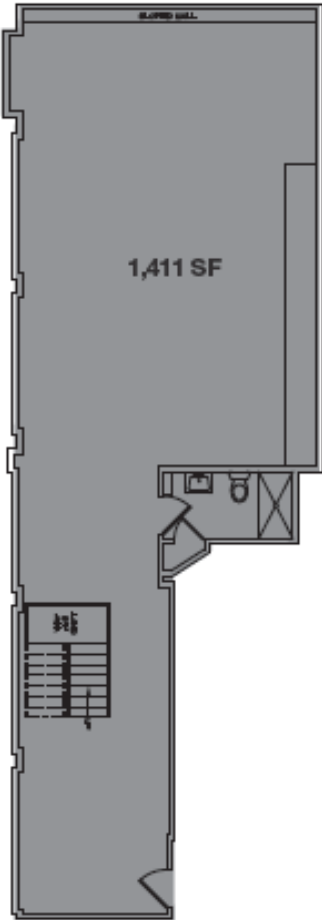
12 WEST 31ST STREET Ground Floor Sublease

GROUND FLOOR



2,001 SF

LOWER LEVEL



1,411 SF

22 FT
WEST 31ST STREET

12 WEST 31ST STREET Ground Floor Retail Sublease



12 WEST 31ST STREET Ground Floor Retail Sublease

