



PREMIER COMMERCIAL SPACES FOR RENT

315 FIFTH AVENUE

Address: 315 Fifth Avenue,
New York, NY 10016
(SE Corner of Fifth Ave & 32nd
Street)

Description: 55,000 SF 12 Story Office Building

Features: 24/7 attended lobby and access.

2 passenger elevators and 1 large
freight elevator.

Corner property with excellent
light and views.

Fully wired with high speed
internet access.

Central AC. Convenient access to
Penn Station.

All spaces will be delivered fully
renovated.

Use: Flexible.
Perfect for all beauty and wellness
related businesses (Medical
Clinics, Facial and skincare,
Eyelash Extension, Acupuncture
... etc),
Lawyers, CPA and other Office
use, Showroom and wholesale
businesses..





Suite: 503/504/505

Size: 1,450 SF

Asking Rent: \$6,500/month

Electricity: \$3.50/SF/Year

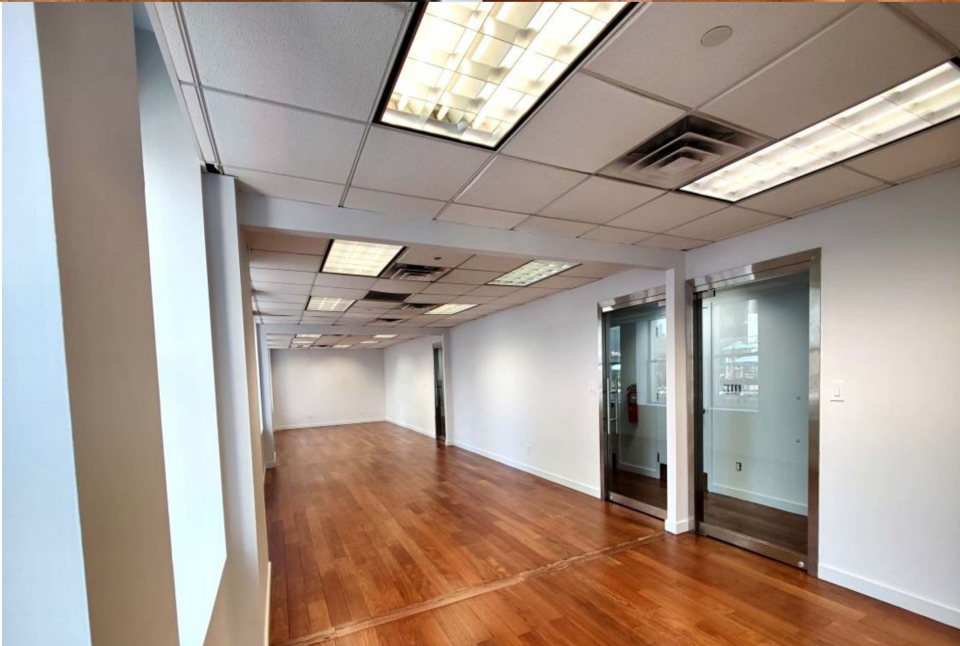
Other Expenses: \$400/month
(Water, Sprinkler, Security, Garbage Removal)

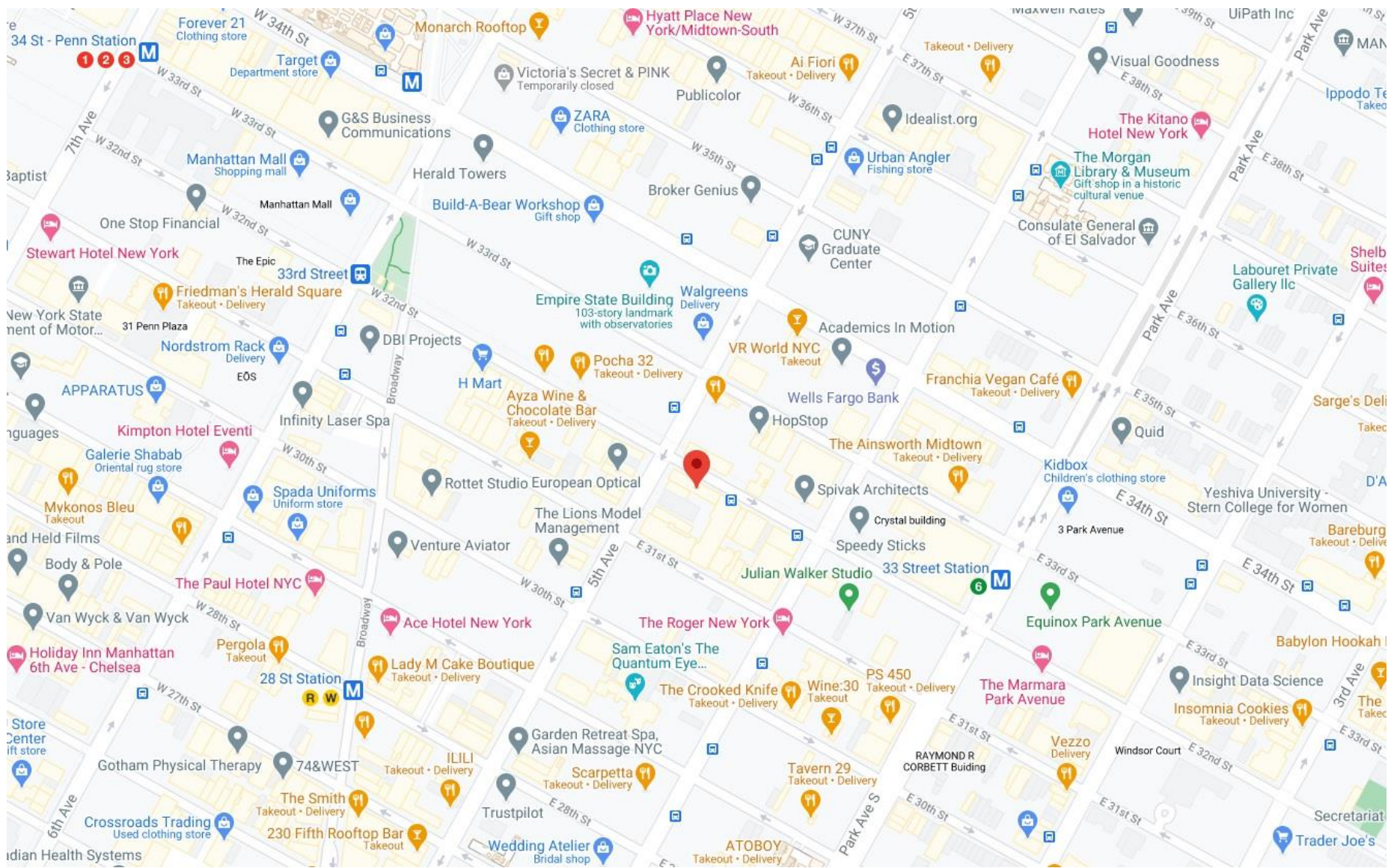
Description: Open layout 3 glass entrance doors, amazing 8 windows!!

Will Divide!!

503/504: 950 SF, \$3,950/month

505: 500 SF, \$2,550/month





Neighborhood

