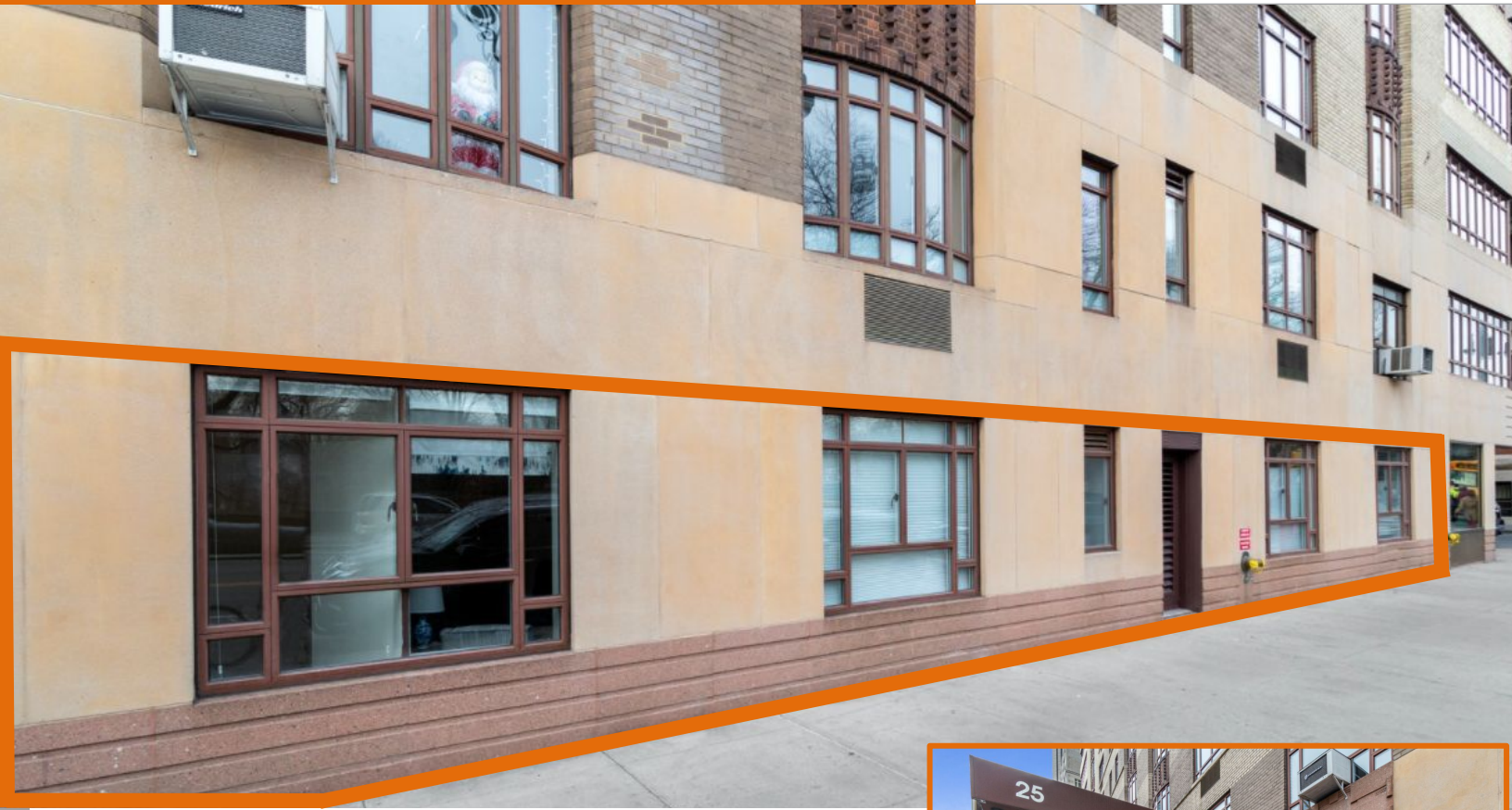


# 25 Central Park West, #1/2

Between West 62nd & 63rd Streets  
New York, NY 10023



**SIZE:** Two Ground Floor Professional / Medical Spaces  
– Can be Combined to Approximately 1,800 SF

**POSSESSION:** Immediate

**RENT:** Upon Request

## COMMENTS:

- PRIME Entry Directly on Central Park West!
- Currently Configured as Two Separate Offices  
– Can Be Delivered Combined.
- Each Unit features a Waiting Area, Storage Closet,  
3 Offices, and a Bathroom. Unit #2 Also Includes a Kitchenette.
- Professional / Medical Use Considered
- Elevator Building with Full-Time Doorman and Staff

## DESCRIPTION:

One of a kind opportunity to purchase or lease, and with the option to combine, two separate Ground Floor professional/medical offices in a historic pre-war condo on Central Park West. Mere steps from Central Park, and with outstanding views of the park through a combined seven windows, natural light comes in throughout the day. Perfect for repurposing for many specialties or offices of any kind. A once in a lifetime chance for the future of your business! Perfect for any general office use or outpatient medical offices such as plastic surgery, psychiatry, dentistry, orthodontics, etc. Low maintenance charges!

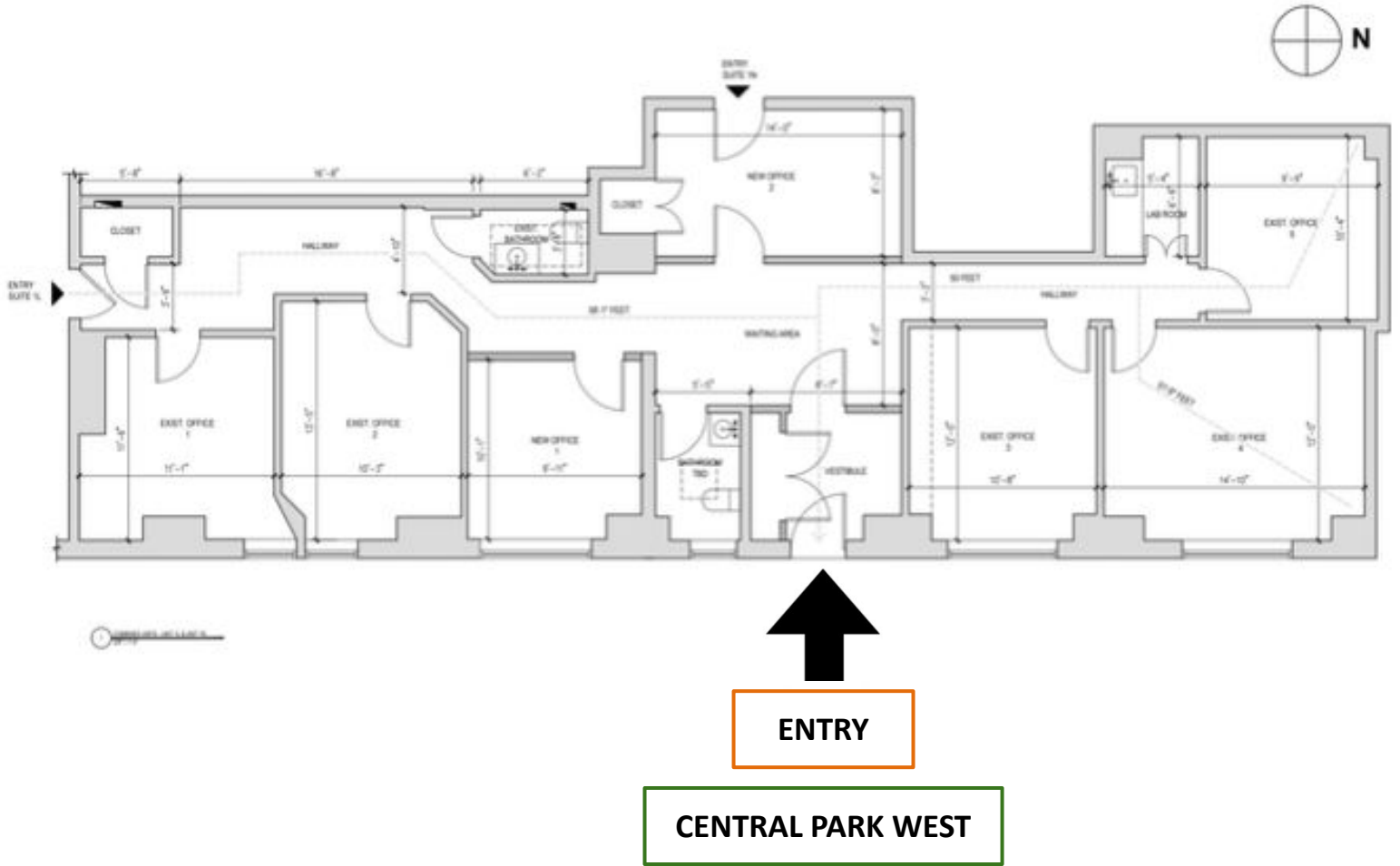


# 25 Central Park West, #1/2

Between West 62nd & 63rd Streets  
New York, NY 10023

## FLOOR PLAN:

SPACES 1&2 Combined



# 25 Central Park West, #1/2

Between West 62nd & 63rd Streets  
New York, NY 10023

