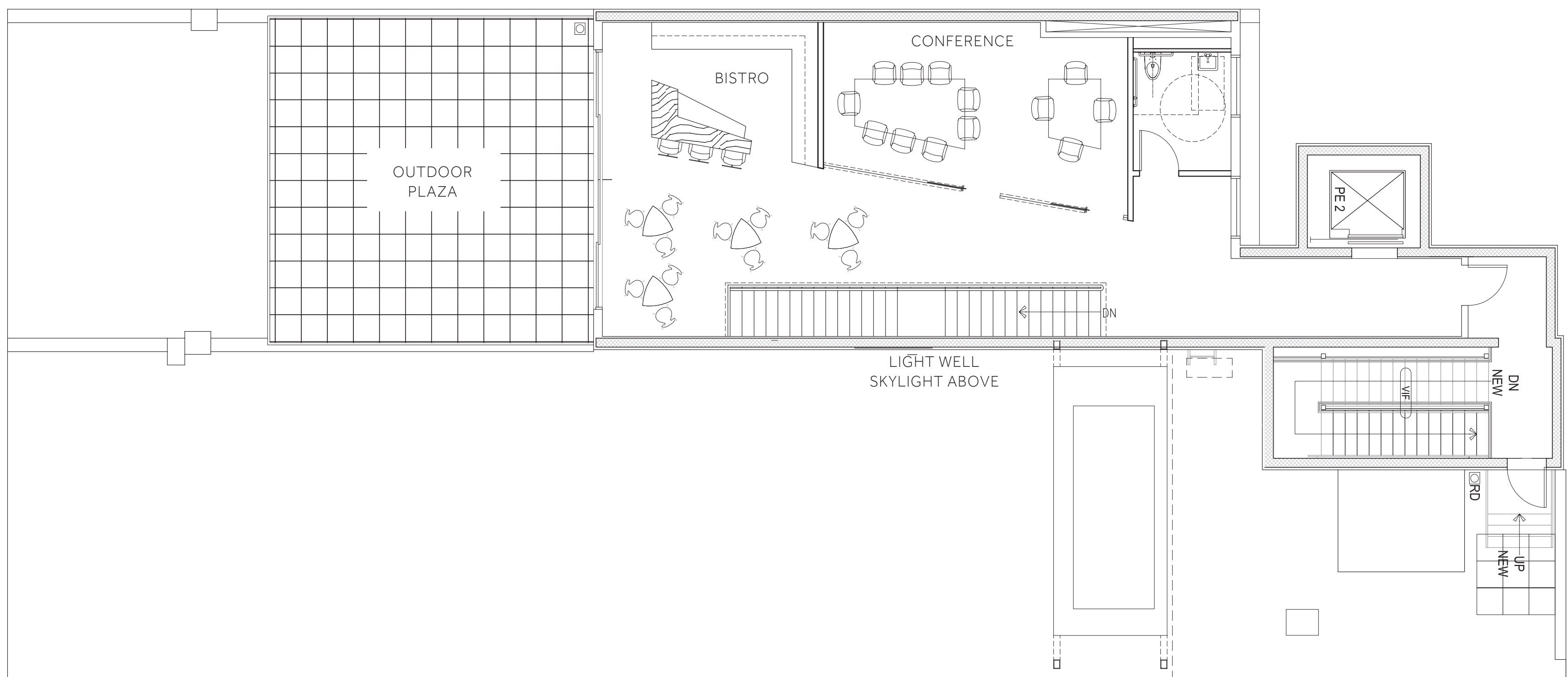
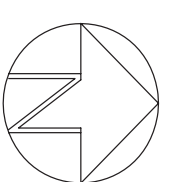




HOWARD ST.



CROSBY ST.

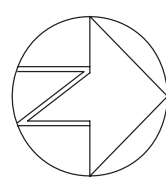
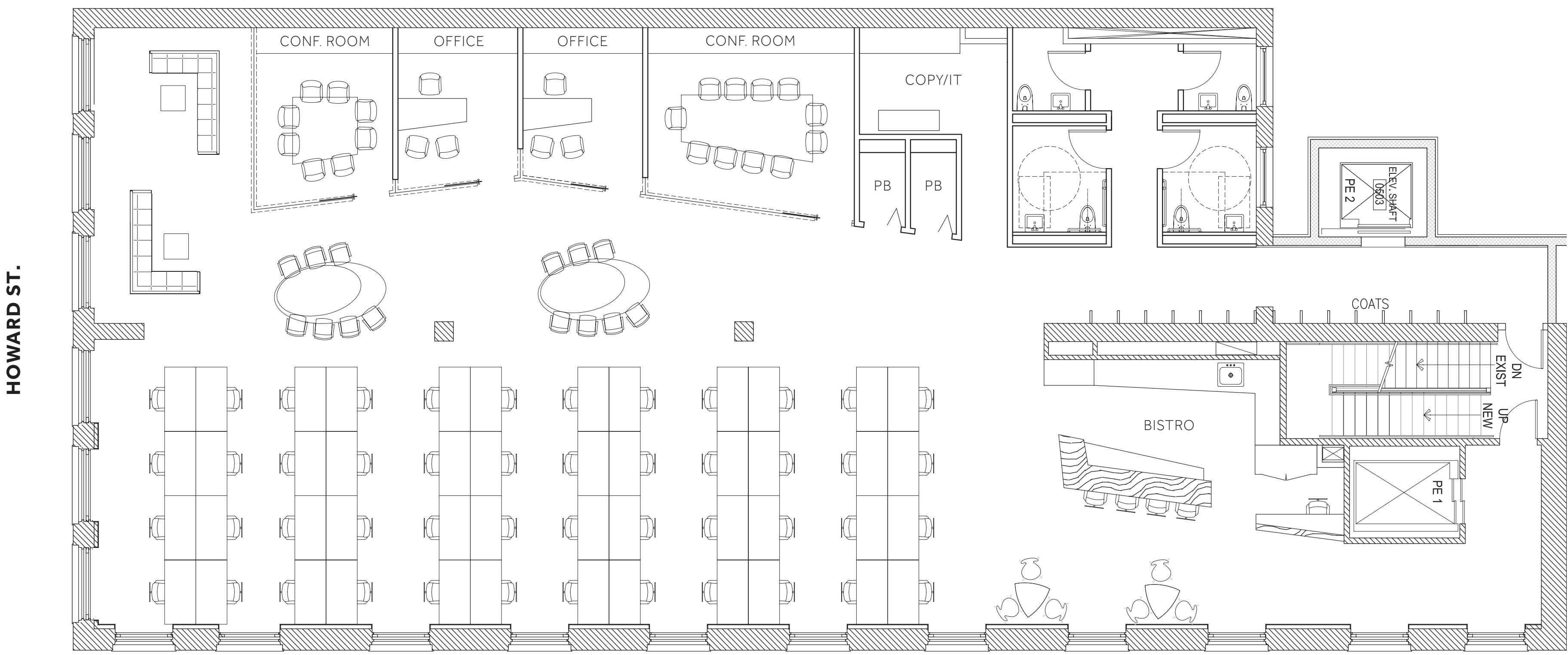


# PENTHOUSE

RSF 1,960

**SUPPORT**  
1 CONF. ROOM 10+4 PP  
1 BISTRO  
1 OUTDOOR PLAZA  
1 TOILET





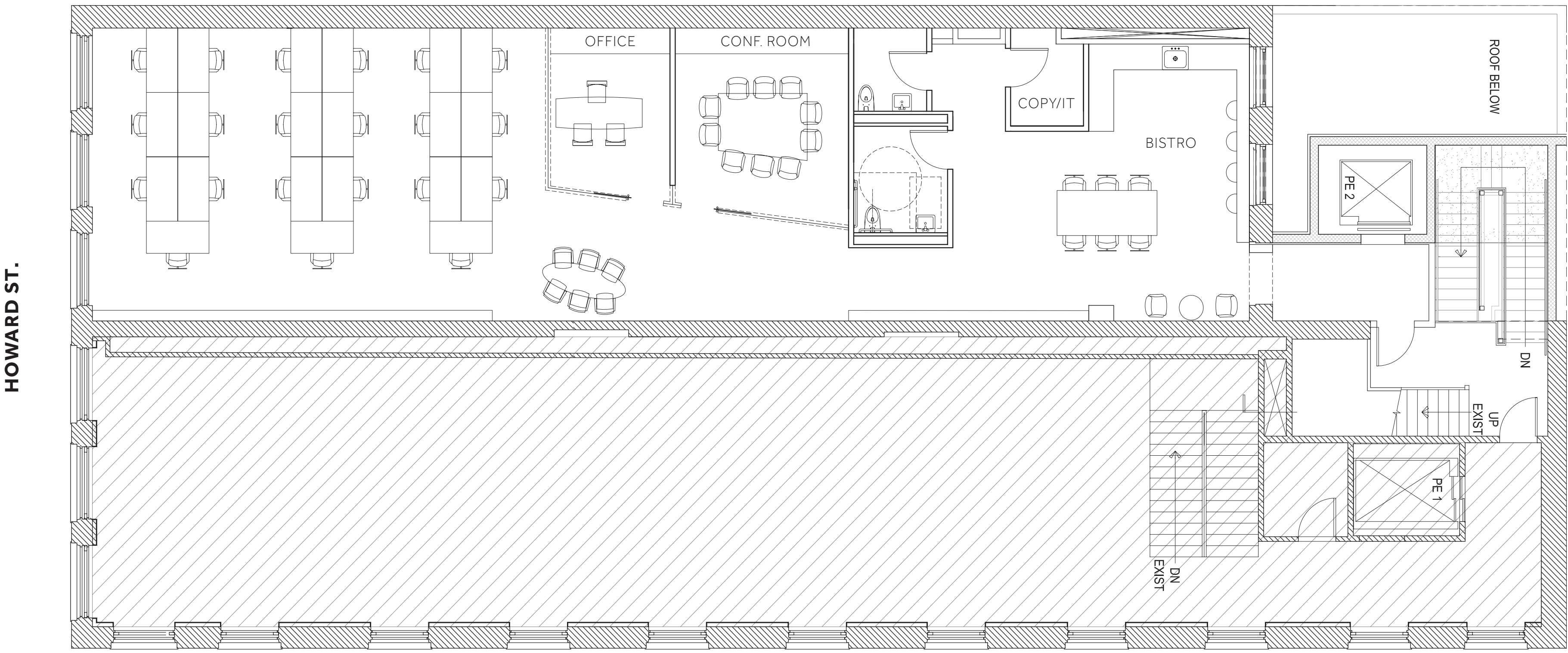
# 3RD FLOOR

RSF 7,475

**PERSONNEL**  
OFFICE - 2 SEATS  
BENCHING - 48 SEATS  
RECEPTION - 1 SEAT  
51 TOTAL SEATS

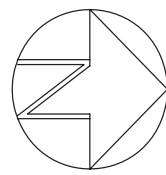
**SUPPORT**  
1 CONF. ROOM - 11 PP  
1 CONF. ROOM - 8 PP  
1 BISTRO  
4 COLLABORATIVE  
1 COPY/IT  
2 PHONE BOOTHS  
4 TOILETS





HOWARD ST.

CROSBY ST.



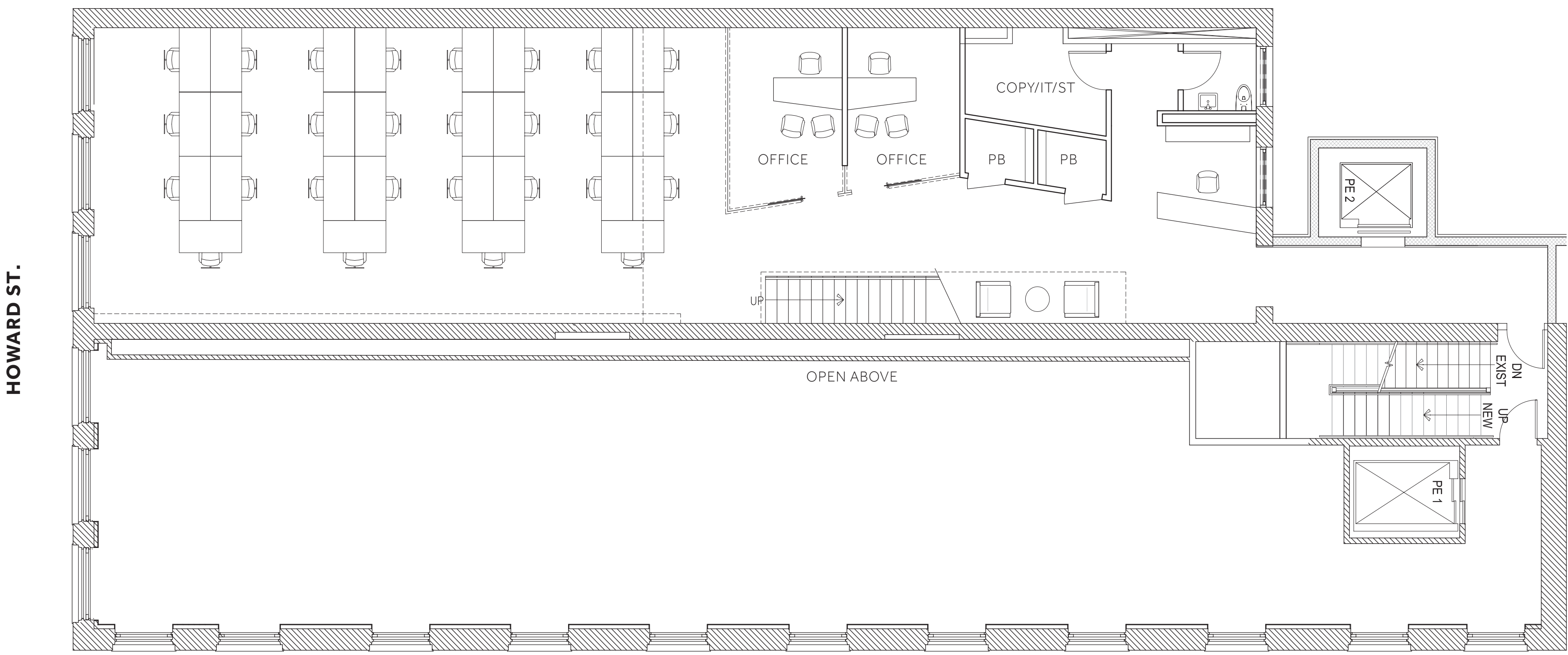
# 2ND FLOOR

RSF 3,906

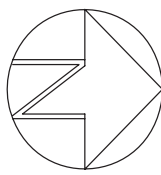
**PERSONNEL**  
OFFICE - 1 SEAT  
BENCHING - 21 SEATS  
22 TOTAL SEATS

**SUPPORT**  
1 CONF. ROOM - 10 PP  
1 BISTRO  
1 COLLABORATIVE  
1 COPY/IT  
2 TOILETS





CROSBY ST.



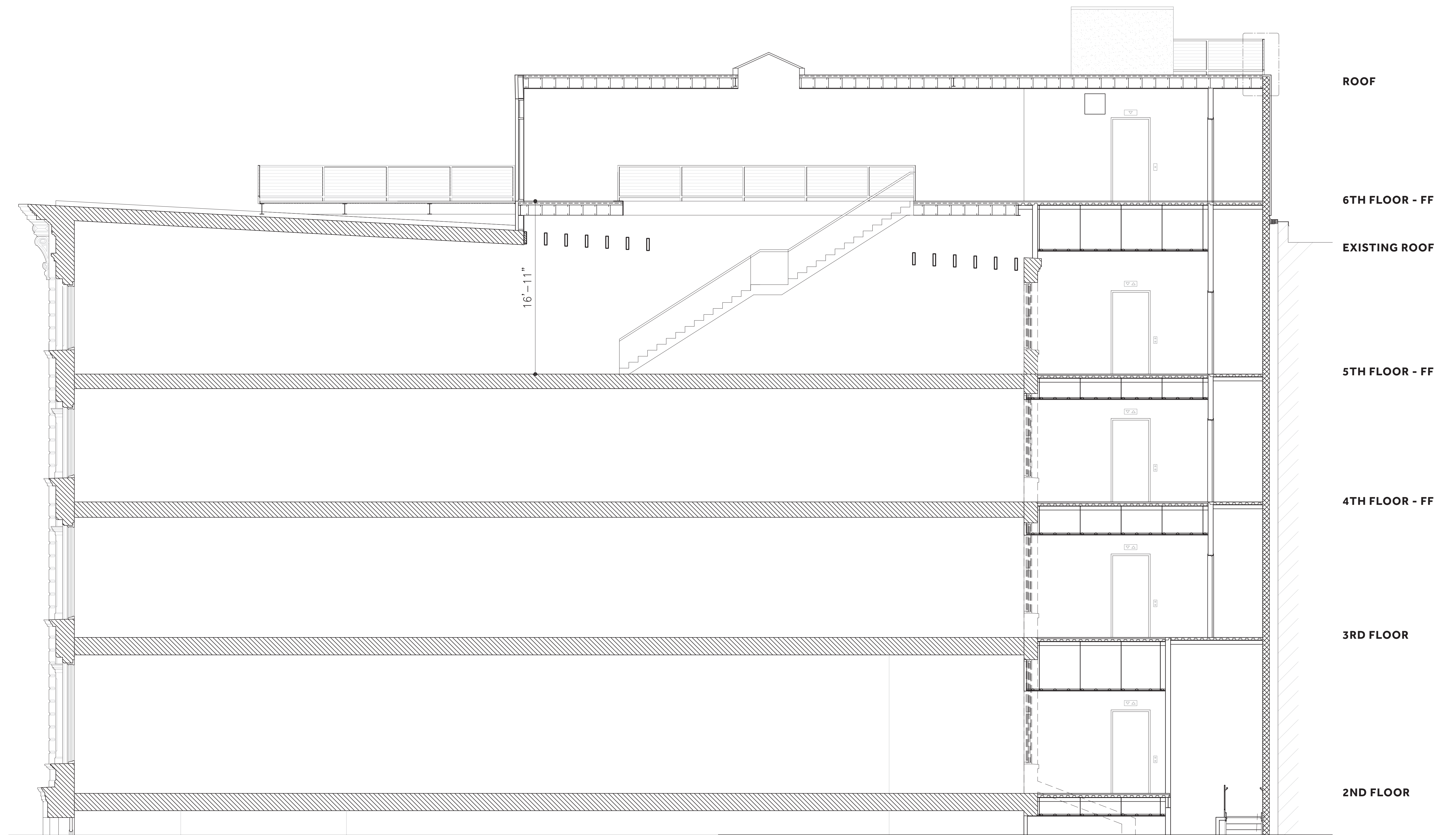
# 5TH FLOOR

RSF 3,830

**PERSONNEL**  
OFFICE - 2 SEATS  
BENCHING - 28 SEATS  
RECEPTION - 1 SEAT  
31 TOTAL SEATS

**SUPPORT**  
1 COPY/IT  
2 PHONE BOOTHS  
1 INTERIOR STAIR  
1 TOILET





# SPACES

**PARTIAL 2ND FLOOR:** 3,906 RSF  
**ENTIRE 3RD FLOOR:** 7,475 RSF  
**ENTIRE 4TH FLOOR:** 7,475 RSF

**PARTIAL 5TH FLOOR:** 3,830 RSF\*  
**ENTIRE PENTHOUSE:** 1,960 RSF\*  
 \*Must be leased together