

Move-in Ready - 1,978 RSF - Efficient Layout



Suite 1204 - Existing Conditions



915 BROADWAY

BETWEEN THE PARKS





Existing Conditions

Suite 1204: 1,978 rsf

- Built, move-in condition space with hardwood floors throughout
- Freestanding phone booth and (1) phone room, coat closet, (1) storage closet
- Glass-front meeting room, open area, and wet pantry
- Flexible term

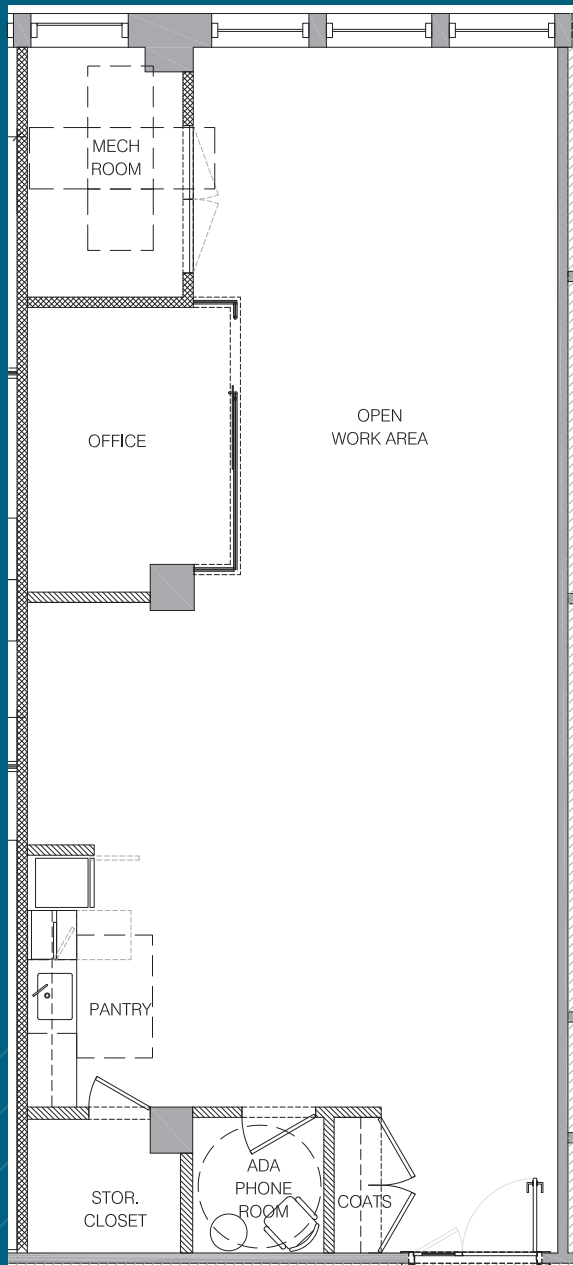
Possession: Immediate

Rent: Call or email for info

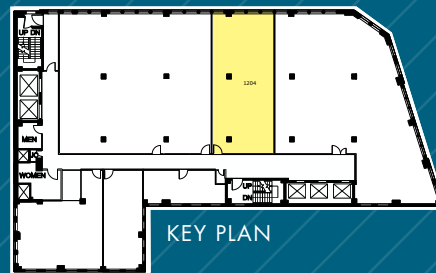
- High speed fiber on each floor connected to a redundant fiber loop below the building
- Direct access to the Union Square transportation hub 4 5 6 L N Q R W express and local subway lines
- Centrally located between Union Square and Madison Square Parks, the area offering a wide variety of services, retail, and dining options



SUITE 1204 - 1,978 RSF
(AS-BUILT)



(for descriptive purposes only; not to scale.)



FLATIRON'S TECH-CENTER, CENTRALLY LOCATED BETWEEN THE PARKS

