

# 207

WEST 75<sup>TH</sup> STREET  
UPPER WEST SIDE, NYC

Between Broadway and  
Amsterdam Avenue

RETAIL FOR LEASE

#### APPROXIMATE SIZE

Ground Floor: 2,100 SF  
Lower Level: 1,200 SF

#### ASKING RENT

\$25,000 per month

#### CEILING HEIGHTS

Ground Floor: 10 Feet  
Lower Level: 9 Feet

#### FRONTAGE

18 Feet

#### POSSESSION

Immediate

#### NEIGHBORS

Juice Press • Soul Cycle • Sweetgreen • Joe & the Juice • Starbucks • Levain Bakery • Lululemon • Equinox • Beacon Theatre • Viand Café • 16 Handles • Bluemercury • The Owl's Tail • Playa Betty's

#### COMMENTS

- Brand New Development
- Selling Lower Level
- All Uses Considered
- Can Easily be Vented
- High Foot Traffic
- Visibility from Broadway and Amsterdam Avenue

#### TRANSPORTATION

1 2 3



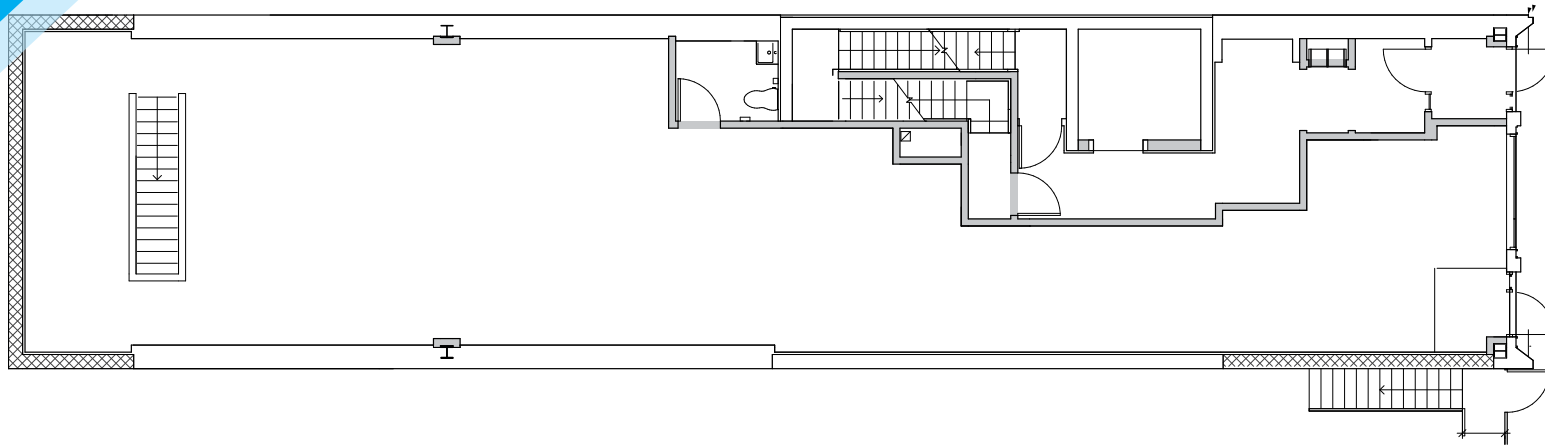
# 207

WEST 75<sup>TH</sup> STREET  
UPPER WEST SIDE, NYC

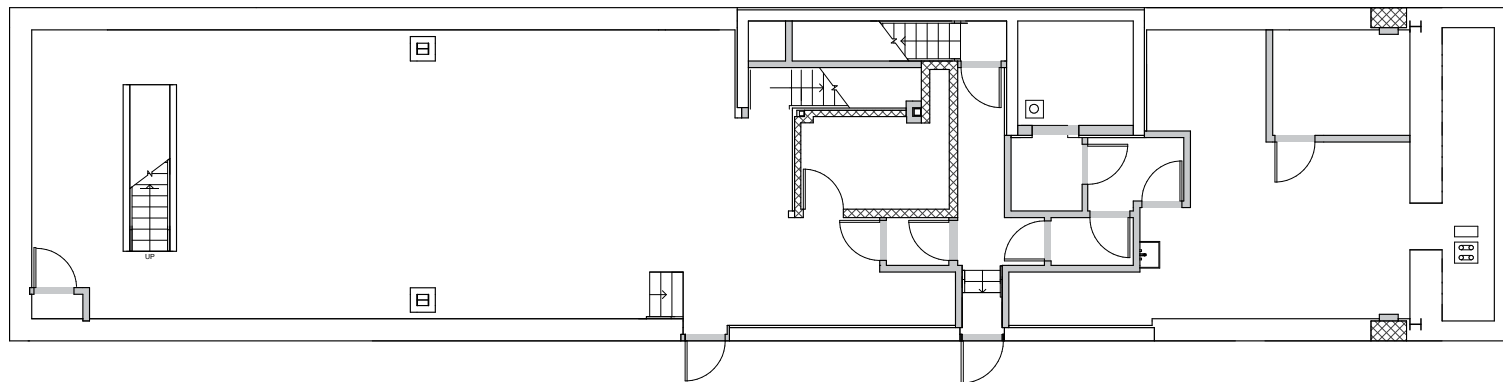
Between Broadway and  
Amsterdam Avenue

RETAIL FOR LEASE

## FIRST FLOOR



## BASEMENT



# 207

## WEST 75<sup>TH</sup> STREET

UPPER WEST SIDE, NYC

Between Broadway and  
Amsterdam Avenue

RETAIL FOR LEASE

### YOUR NEIGHBORS

