

10,640 SF FOR SUBLEASE

521 5th Avenue

Entire 21st Floor

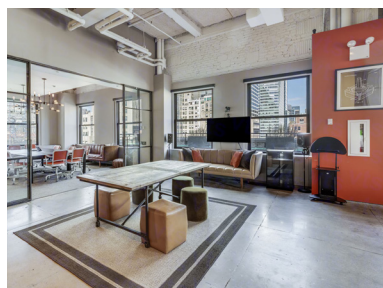
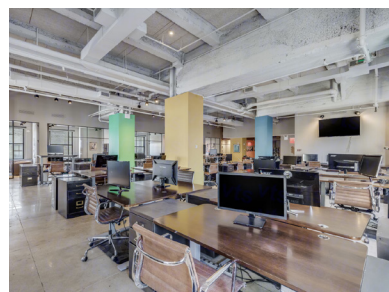
New York, NY

*Possession / Immediate
Term / 11.29.2024*



About the BUILDING

- Plug and play creative space for +/- 70 employees
- Large usable terrace overlooking Fifth Avenue
- Dramatic 16' ceiling height
- Creative installation with polished concrete flooring throughout
- Conveniently located near Grand Central Terminal



Floor Plan

