

INCREDIBLE NEWLY-BUILT SUBLEASE

AMENITY-RICH BUILDING WITH GREAT LIGHT / VIEWS



Space Profile

Size: **10,846 SF**

Floor: **Entire 19th**

Rate: **Upon Request**

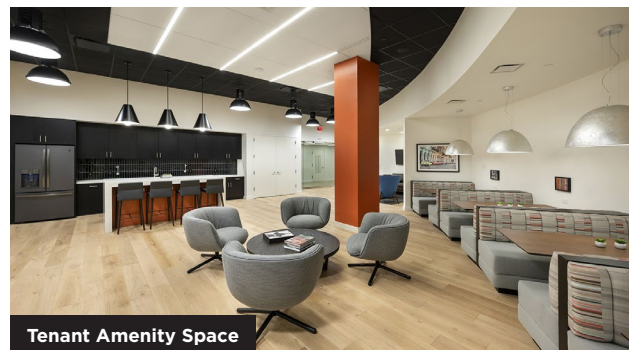
Availability: **Immediate**

Term: **Through June 29, 2031**

[Click Here to View Space Video](#)

Key Highlights

- Institutional Landlord and Quality Sublandlord
- Brand new installation
- Newly renovated building with tenant amenity center, which includes:
 - Fitness center, wellness center, conferencing facility, recreation space, library, cafe and lounge
- Proximate to Grand Central and Rockefeller Center
- Great light / views



Tenant Amenity Space

SUBLEASE 477 Madison Avenue, New York, NY 10022



SUBLEASE 477 Madison Avenue, New York, NY 10022



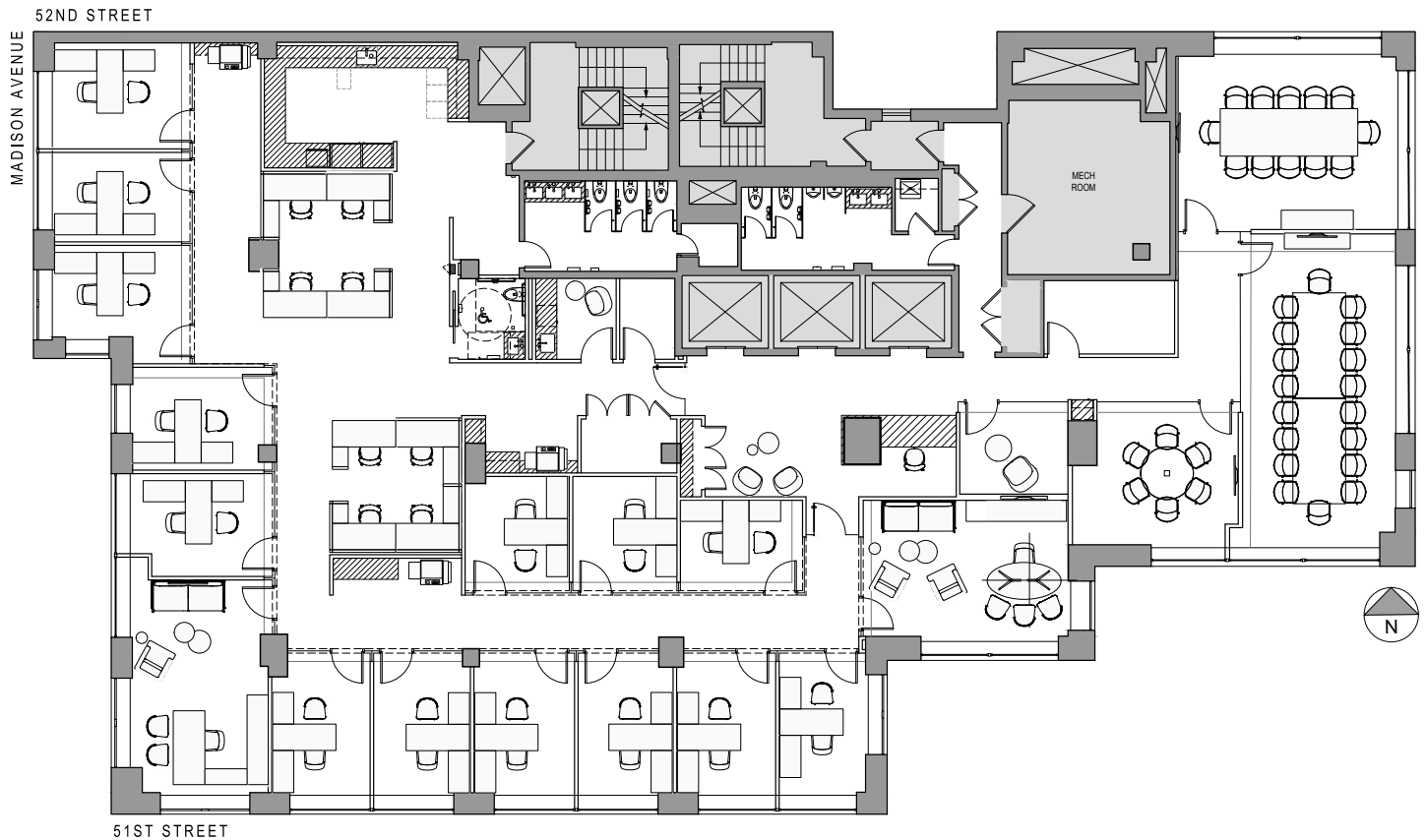
SUBLEASE 477 Madison Avenue, New York, NY 10022



Entire 19th Floor

10,846 SF

[Click Here to View Space Video](#)



Space Overview

- | | |
|-----------------------------|------------------------------------|
| 11 perimeter offices | 1 18 person conference room |
| 2 executive offices | 1 12 person conference room |
| 3 internal offices | 1 6 person conference room |
| 8 work stations | 1 pantry |