



# 600 LEX



ENTIRE 2ND FLOOR — 10,879 SF



## BUILDING FEATURES:

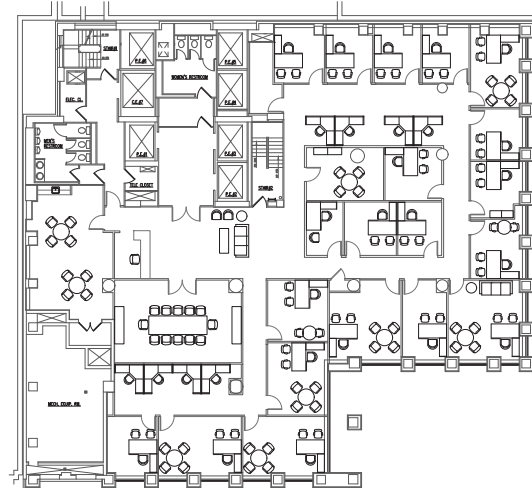
- Modern construction with floor-to-ceiling windows and efficient building systems (DX Water cooled units on each floor)
- Artwork from the William Louis-Dreyfus Foundation on display in lobby
- New market-leading tenant-only amenities including:
  - **Fitness Facility:** Open 24/7 with Peloton bikes, yoga studio, free weights, cardio equipment, and strength training equipment. Men's and women's locker rooms include saunas and towel service.
  - **Conferencing Center:** Large 22-person boardroom, extra perimeter seating, serving pantry, and soft seating area.
- Accessible location with 3 subway lines (6, E, M) within 1 block, walking distance to Grand Central and LIRR East Side Access

# SPACE FEATURES

## FLOOR PLAN

### ENTIRE 2ND FLOOR - 10,879 SF

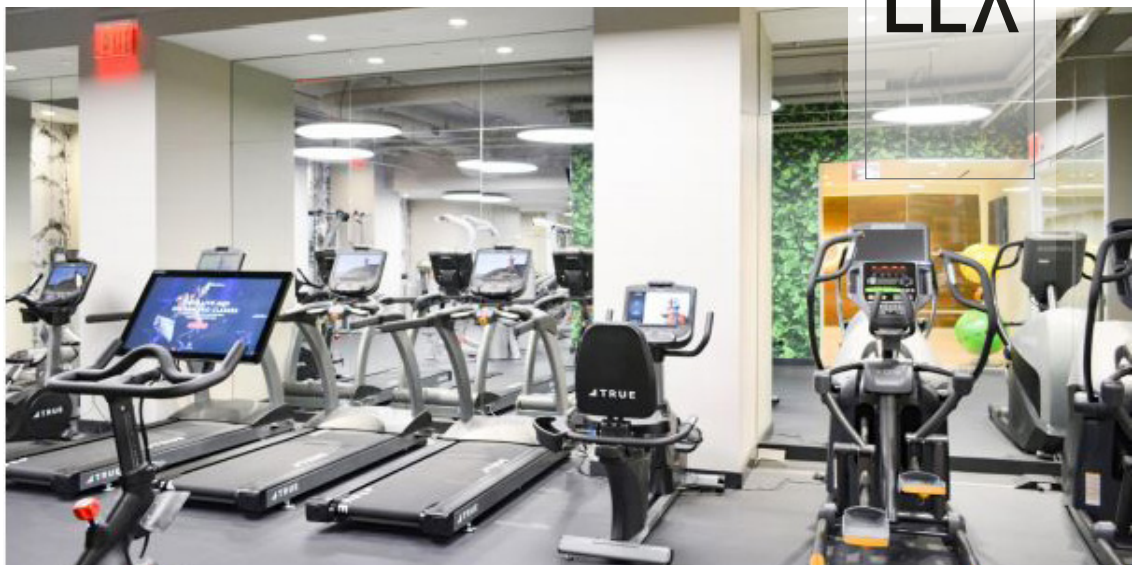
- New prebuilt pending
- Boutique, full floor opportunity
- Oversized windows with streetscape views
- Efficient side core floor plate





## AMENITIES

LEX





# NEIGHBORHOOD MAP

# LEX

